

ChargePoint Flex Series

Networked Charging Station Installation



IMPORTANT SAFETY INSTRUCTIONS

SAVE THESE INSTRUCTIONS



WARNING: This manual contains important instructions for Home Flex. When using electric products, always follow basic precautions, including the following:



1. **Read and follow all warnings and instructions before installing and operating the ChargePoint® charging station.** Install and operate only as instructed. Failure to do so may lead to death, injury or property damage and will void the Limited Warranty.
2. **Only use licensed professionals to install your ChargePoint charging station and adhere to all national and local building codes and standards.** Before installing the ChargePoint charging station, consult with a licensed contractor, such as a licensed electrician, and use a trained installation expert to ensure compliance with local building and electrical codes and standards, climate conditions, safety standards, and all applicable codes and ordinances. Inspect the charging station for proper installation before use.
3. **Always ground the ChargePoint charging station.** Failure to ground the charging station can lead to risk of electric shock. The charging station must be connected to an earthed, metal, permanent wiring system or an equipment earth conductor shall be run with circuit conductors and connected to the equipment earth terminal or lead on the Electric Vehicle Supply Equipment (EVSE). Connections to the EVSE must comply with all applicable codes and ordinances.
4. **Install the ChargePoint charging station using a ChargePoint approved method.** Failure to install on a surface that can support the full weight of the charging station can result in death, personal injury, or property damage. Inspect the charging station for proper installation before use.
5. **This charging station is not suitable for use in Class 1 hazardous locations, such as near flammable, explosive or combustible vapours or gases.**
6. **This device should be supervised when used around children.**
7. **Do not put fingers into the electric vehicle connector.**
8. **Do not use this product if any cable is frayed, has broken insulation, or shows any other signs of damage.** Call ChargePoint Support immediately at 1.888.758.4389 (24 hours).
9. **Do not use this product if the enclosure or the EV connector is broken, cracked, open, or shows any other signs of damage.** Call ChargePoint Support immediately at 1.888.758.4389 (24 hours).
10. **Use 90°C wire copper conductors only.**



11. **Applicable only to NA - Do not operate the charging station in temperatures outside its operating range.** For charging stations set to 16–48 A, the range is -40°F to 122°F (-40°C to 50°C). For charging stations set to 50 A, the range is -40°F to 113°F (-40°C to 45°C).
12. **Other than the charging cable, Home Flex contains no field serviceable parts.** Do not attempt to repair or service any other part of the unit yourself. If the unit requires servicing, contact ChargePoint, Inc.
13. **Ensure the charging cable is positioned so it is not stepped on, tripped over, or subjected to damage or stress.** Do not close a garage door on the charging cable.

Product Disposal

ChargePoint Home Flex is electronic and therefore may not be disposed of as part of unsorted domestic waste. Enquire with local authorities regarding proper disposal. Product materials are recyclable as marked.



Document Accuracy

The specifications and other information in this document were verified to be accurate and complete at the time of its publication. However, due to ongoing product improvement, this information is subject to change at any time without prior notice. For the latest information, see our documentation online at [ChargePoint Product Reference Documentation](#).

Copyright and Trademarks

©2013-2025 ChargePoint, Inc. All rights reserved. This material is protected by the copyright laws of the United States and other countries. It may not be modified, reproduced, or distributed without the prior, express written consent of ChargePoint, Inc. ChargePoint and the ChargePoint logo are trademarks of ChargePoint, Inc., registered in the United States and other countries, and cannot be used without the prior written consent of ChargePoint.

Symbols

This guide and product use the following symbols:



DANGER: Risk of electric shock



WARNING: Risk of personal harm or death



CAUTION: Risk of equipment or property damage



IMPORTANT: Crucial step for installation success



NOTE: Helpful information to facilitate installation success



Read the manual for instructions



Ground/protective earth

Illustrations Used in this Document

The illustrations used in this document are for demonstration purposes only and may not be an exact representation of the product. However, unless otherwise specified, the underlying instructions are accurate for the product.

Revision History

This page provides a summary of revisions made, listing the month and year of each update along with a brief description of the changes made.

Month & Year	Version Number	Description
November, 2025	v2	Revised pin and jumper details and images in Appendix A Smart Meter Functionality . Added step for removing QR code label.
August, 2025	v1	Initial release.

Contents

IMPORTANT SAFETY INSTRUCTIONS	ii
Revision History	v
1 Introduction	1
Bring These Tools and Materials	2
Inspect the Box for Contents	2
2 Install the Backplate	3
Pull AC Terminal Wiring into Backplate	5
3 Wire the Charging Station	8
Connect AC Terminal Input Wires	8
Close the Backplate	11
4 Install the Charging Station	13
Lock the Charging Station (Optional)	14
Uncoil Charging Cables	17
5 Complete the Station Setup	19
Configure the Station	20
Unlock the Charging Station (Optional)	20
Activate the Station	23
Start a Charging Session	23
Guide to LED colours	25
A Optional Energy Management Settings	27

Introduction 1

Flex Series stations are alternating current (AC) charging stations, capable of delivering up to 22 kW (three phase) of power to an electric vehicle (EV). They feature metering compliant with calibration law and backend connectivity via OCPP 2.0.1 and it can be used in semi-public and public areas with billing based on energy consumption.



IMPORTANT: You must be a licensed electrician and complete online training to become a ChargePoint-certified installer. If you do not complete this training, you cannot access the ChargePoint network to complete the installation. Find online training at: chargepoint.com/installers. If the charging station is not installed by a ChargePoint certified installer, using a ChargePoint approved method, it is not covered under warranty and ChargePoint is not responsible for any malfunctions.

Follow the instructions in this guide and heed to all warnings.

Bring These Tools and Materials

To install ChargePoint Flex Series charging stations, you need the following tools and materials:



4 mm (3/16 in) drill bit



T20 Torx screwdriver with torque setting



10 mm (3/8 in) nut setter



Flat blade (4.5 mm) screwdriver with torque setting



Wire stripper



Spirit level



Hand-held drill



QR code scanner (usually built into the camera app)



Smartphone with internet connectivity



ChargePoint installer login credentials



ChargePoint Installer app



ChargePoint Driver app



Ethernet cable with RJ45 plug (if Ethernet is required)



Wires and RJ12 plug for Energy Management (optional)

Inspect the Box for Contents

Check to ensure you have the following parts before you begin to install:

- Charging station
- Backplate
- Quick start guide
- Three 6 mm (3/8 in) x 51 mm (2 in) lag screws
- Three masonry anchors
- M25 cable gland
- Locking screw

Install the Backplate 2

ChargePoint Home Flex charging stations can be mounted on a wall or on a pedestal (ordered separately). Complete the following steps to install the backplate:

1. Inspect the installation location.
 - a. The surface must be flat and a minimum of 160 mm (6 1/3 in) wide.
 - b. The surface must be able to support the full weight of the charging station with the cord hanging from it.
 - c. Ensure the wiring from the main power source can reach the station easily.
 - d. Ensure the location allows the charging cable to reach the car's charging port while still providing slack.
 - e. Ensure a Wi-Fi signal is available.
 - f. Ensure the Lock Out Tag Out (LOTO) procedure is in place before starting the installation.



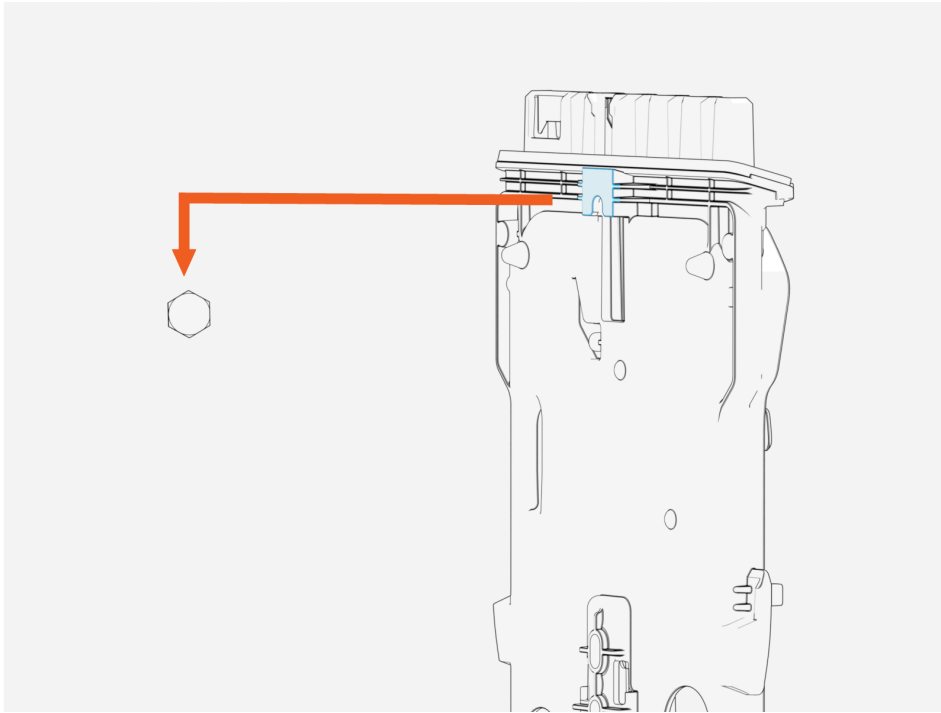
NOTE: Outdoor installation requires hard wiring or an outdoor-rated, weather-resistant electrical outlet.

2. Remove the backplate from the box.
3. Mark the location on the wall.
 - a. For wood stud mounting, mark the centre of the stud with a line from 1000–1100 mm (39–43 in) above the finished floor.
 - b. For masonry or concrete, mark approximate mounting location with a vertical line from 1000–1100 mm (39–43 in) above the finished floor.
4. Using a drill bit suitable for the type of wall, drill the upper mounting hole at the top of the line.
 - a. For wood stud mounting, drive one of the supplied 51 mm (2 in) lag screws into the top mounting hole, leaving a gap of 3 mm (1/8 in) between the screw head and the wall.
 - b. For masonry or concrete mounting, drill the mounting hole by following the instructions for the wall anchor (not provided).

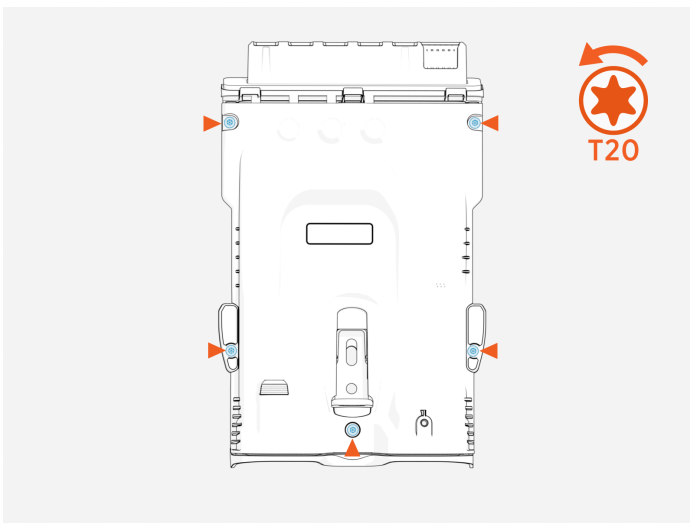
Set the top anchor. Insert a screw into the top mounting anchor, leaving a gap of 3 mm (1/8 in) between the screw head and the wall or pedestal.

5. Align the notch on the back of the backplate with the top anchor. Hang the backplate on the top anchor.

Use a bubble level to ensure it is level.



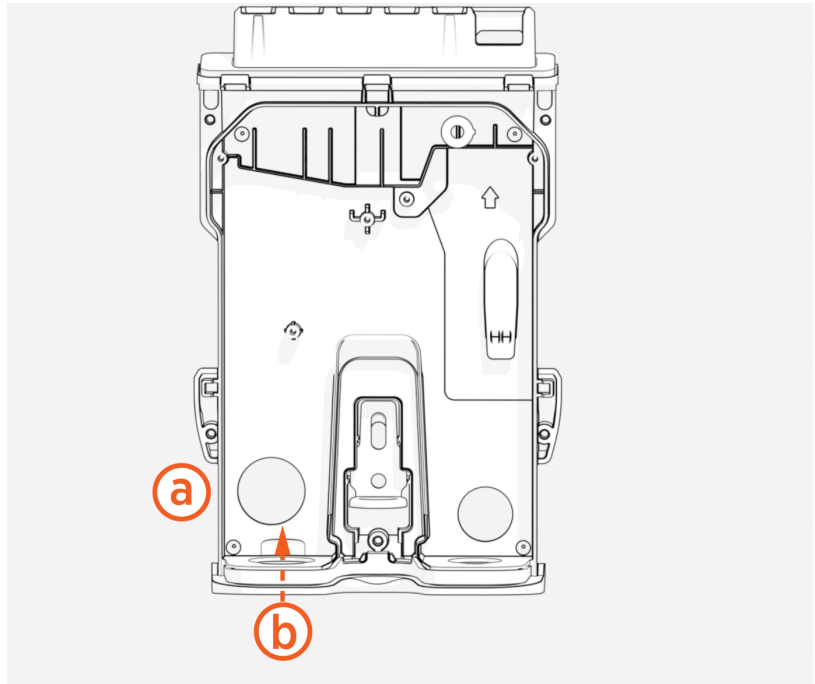
6. Using the backplate as a guide, mark the bottom two mounting holes. Remove the backplate.
7. Using the same tool used for drilling the top hole, drill the bottom two mounting holes (fit wall anchors if required).
8. Hang the backplate on the top anchor.
9. Loosen the five captive T20 screws attaching the cover to the backplate.
Remove the backplate cover.



Pull AC Terminal Wiring into Backplate

Wiring can enter through either the back of or underneath the station.

- a. Wiring from back
- b. Wiring from underneath

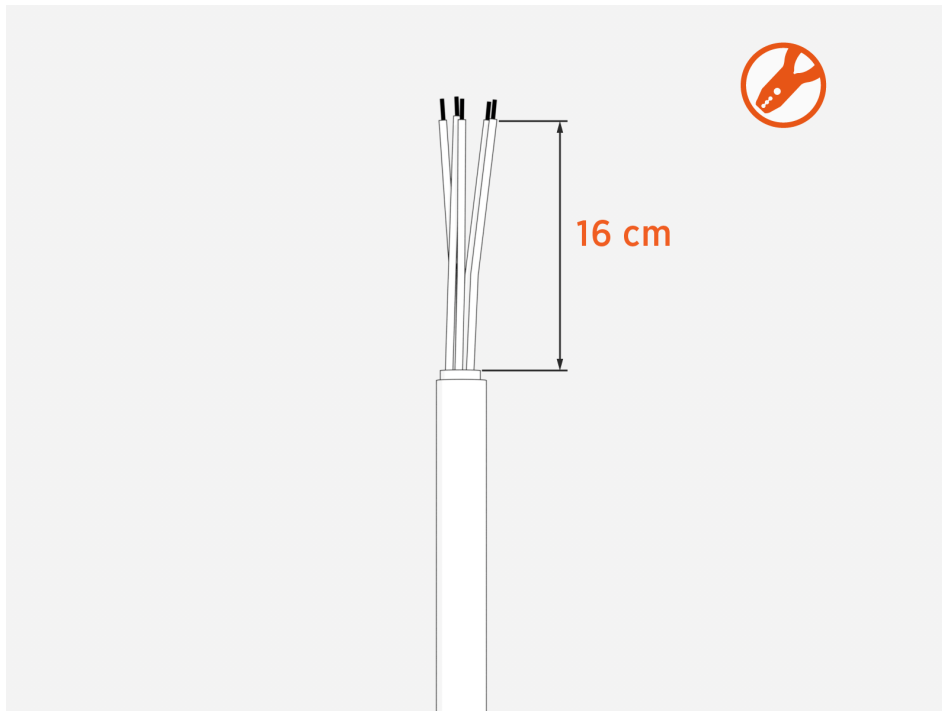


Complete the following steps to pull AC terminal wiring into the backplate:

1. Remove the appropriate plug for power or low-voltage signal cables, depending on where wiring needs to enter the station.

Consider how many option wires (Ethernet and CT, for example) you need to pull into the station.

- Strip 16 cm of the black outer wire cover.



- Strip the wires 15 mm (0.6 in).

Use the label on the back plate as a guide for strip length.



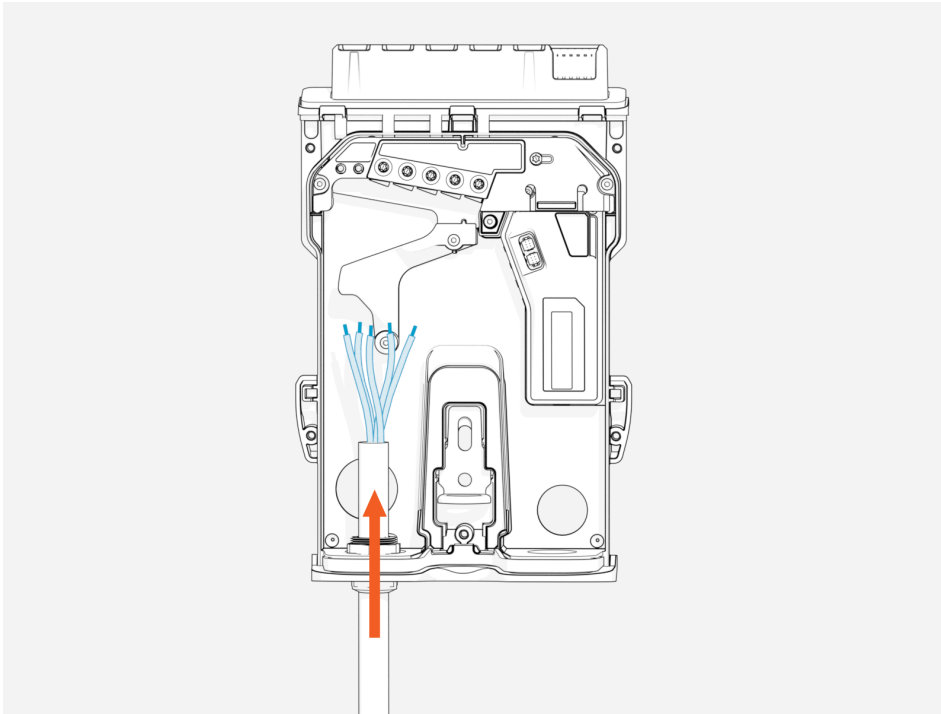
IMPORTANT: Cut wires straight across at 90° and not at an angle.



4. Install the cable gland on the left-most opening on the bottom or back of the backplate.
Pull the wiring through the opening.
Tighten the cable gland nut to secure the wiring.



IMPORTANT: If wiring from the back, install the cable gland in the left-most opening on the back of the backplate instead of the bottom.



5. Insert the remaining fasteners into the mounting holes located in the backplate terminal block area to secure the backplate:
 - For wood mounting, use the two remaining 6 mm (1/4 in) 51 mm (2 in) lag screws provided.
 - For masonry or concrete mounting, use two masonry screws in the anchors (not provided).
 - If installing station on a pedestal, use a T25 screwdriver to secure the station to the pedestal.

Wire the Charging Station 3

Be aware of the following details before connecting the AC terminal wires.

Label	Meaning
N	Neutral (single phase or three phase grid connection)
L1	Line 1 (single phase or three phase grid connection)
L2	Line 2 (only for three phase connection, leave unconnected if single phase)
L3	Line 3 (only for three phase connection, leave unconnected if single phase)
PE/GND	Protective Earth/Ground (single phase or three phase grid connection)



IMPORTANT: Acceptable wire sizes are 2.5 – 16 mm². Consult with local wiring guides for maximum current (measured in amps) of the cable.

Torque Guidelines

Follow these guidelines when torquing wires.

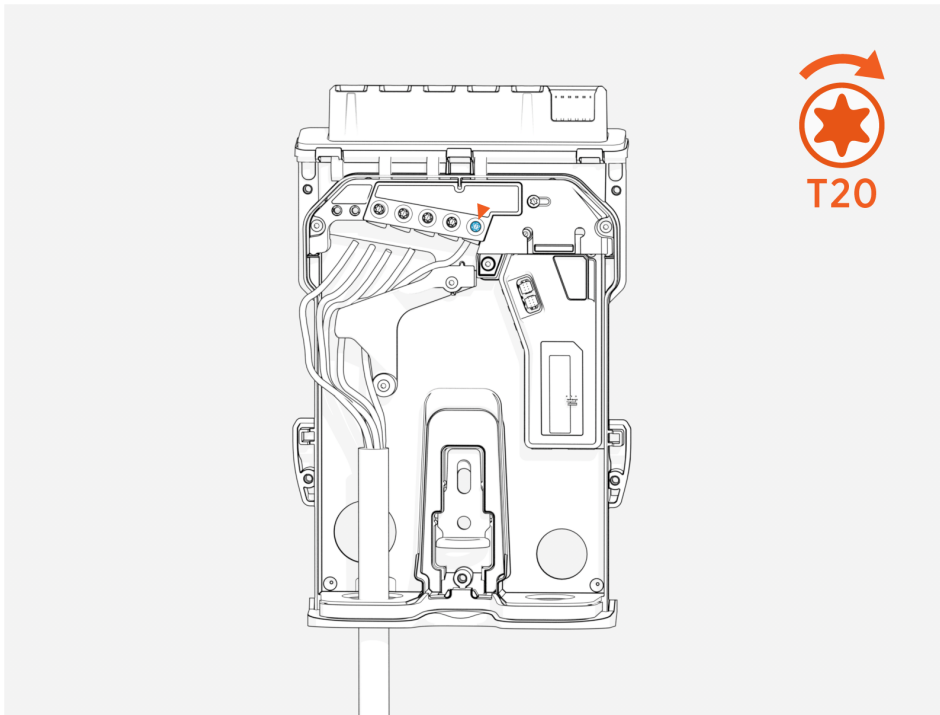
Wire size	Torque value
2.5 mm ²	2.26 Nm (20 in-lb)
4 mm ²	2.26 Nm (20 in-lb)
6 mm ²	2.82 Nm (25 in-lb)
10 mm ²	4.0 Nm (35 in-lb)
16 mm ²	4.0 Nm (35 in-lb)

Connect AC Terminal Input Wires

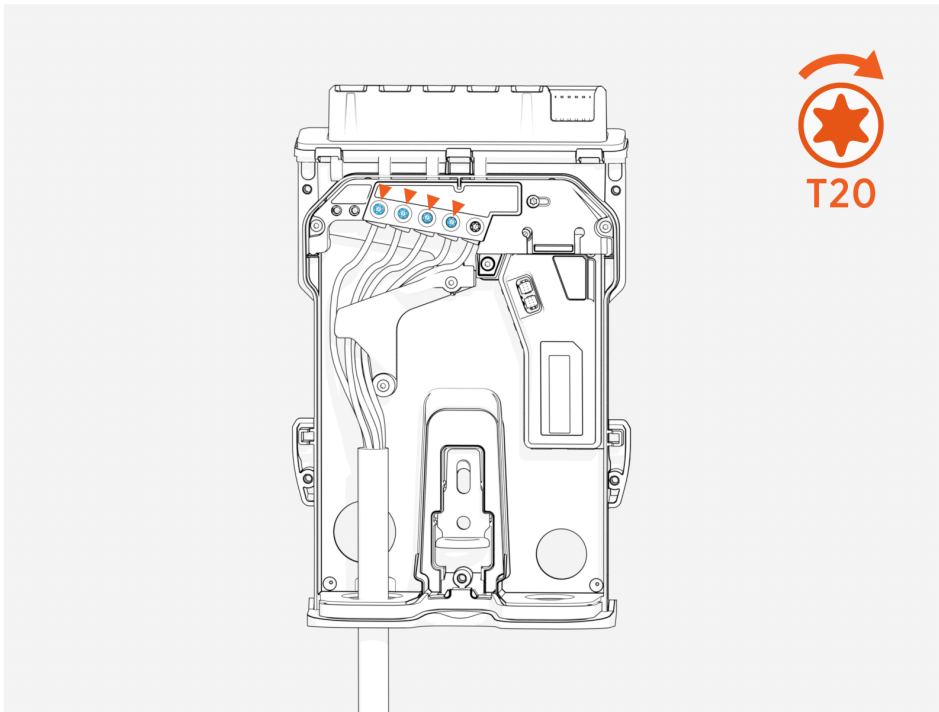
Complete the following steps to connect AC terminal input wires:

1. Wrap the PE/GND wire around the wire guide and insert it into the PE/GND terminal.

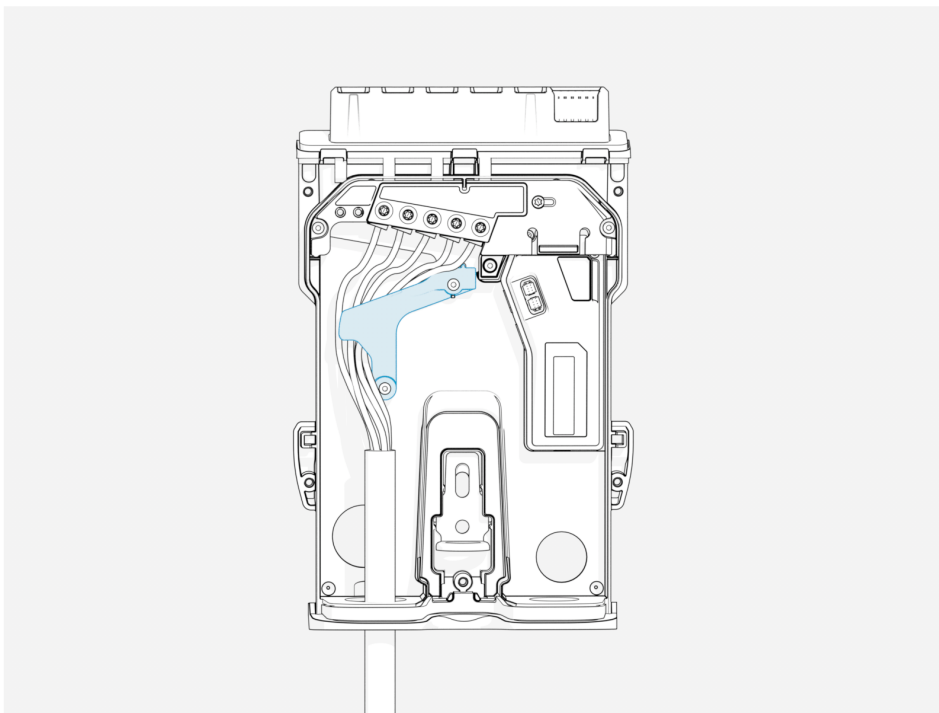
Set the T20 torque value to one that is suitable for the wire being used, then tighten the screw on the PE/GND terminal to the torque limit. (See [Torque Guidelines](#) for more information.)



2. Wrap the N, L3, L2 and L1 wires around the wire guide and insert each wire into the terminal block.
Set the T20 torque value to one that is suitable for the wire being used, then tighten the screw on each of the four incoming wire terminals to the torque limit. (See [Torque Guidelines](#) for more information.)



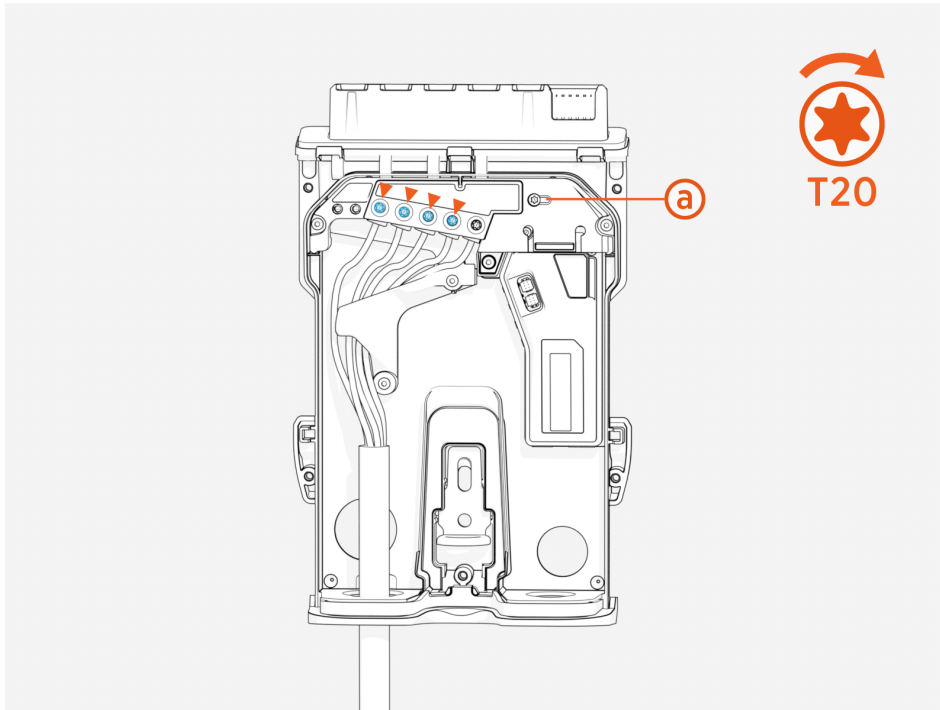
3. Ensure all of the wires are tucked underneath the wire guide.



4. Adjust the current rating.

ChargePoint Flex Series charging stations must be connected to a dedicated circuit breaker.

Use a T20 screwdriver to adjust the current dial **(a)** to match the current rating of breaker.



The charging station will be limited to this maximum current per phase, regardless of the charging station configuration.

Current Dial Values

Position	Amperage
32 A	32 A per phase (set in factory)
25 A	25 A
20 A	20 A
16 A	16 A
12 A	12 A
8 A	8 A
X	Reserved, defaults to 8 A
Y	Reserved, defaults to 8 A
Z	Reserved, defaults to 8 A

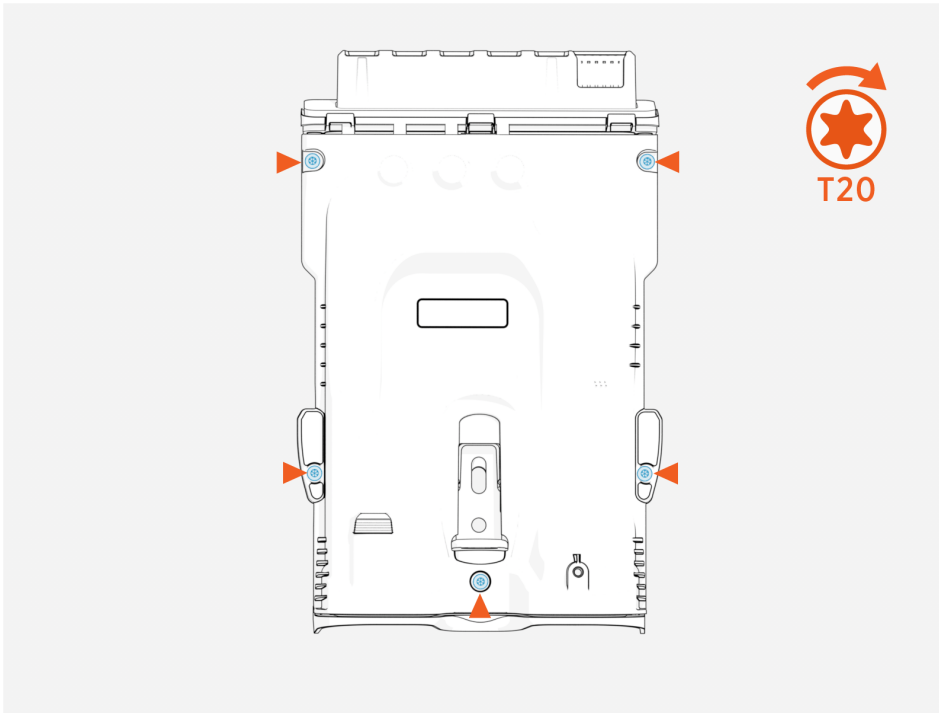
If you choose to use a wired Ethernet connection to connect the charging station to your home, connect the RJ45 connector to the station. Configure the details in the ChargePoint Installer app.

If Ethernet is being used to connect to a smart meter, refer to the [Ethernet](#) section for more details.

Close the Backplate

Complete the following steps to close the backplate:

1. Ensure that the connections are secure.
2. Make sure the current dial has been set correctly.
3. Using a T20 screwdriver tighten all five screws to attach the backplate cover.

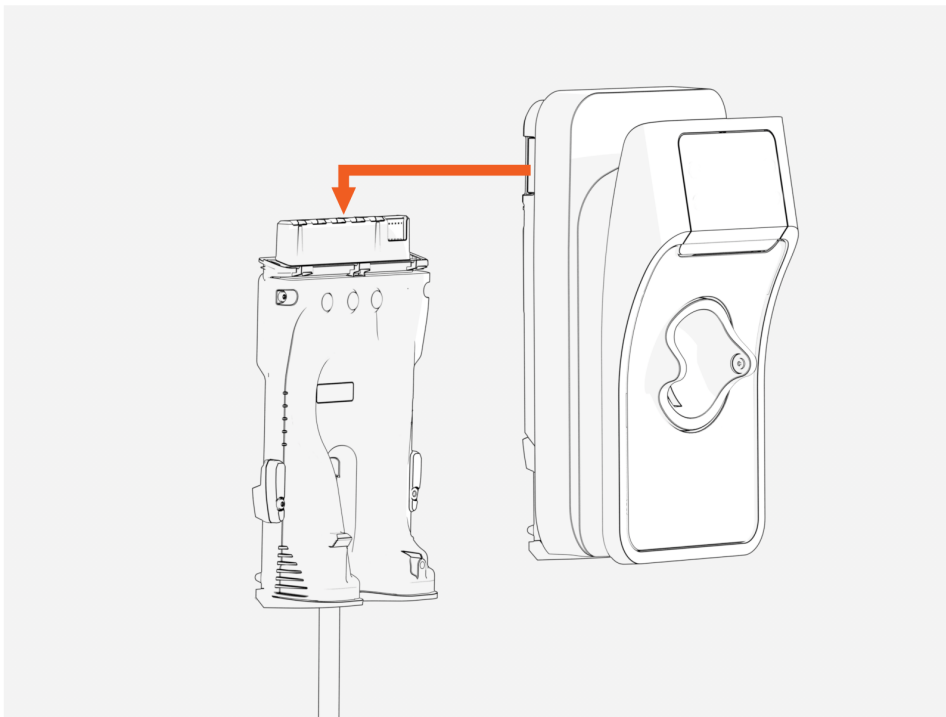


4. Torque each of the five screws to **0.5 Nm (4.5 in-lb)**.

Install the Charging Station 4

Complete the following steps to install the charging station on the backplate:

1. Ensure the upstream breaker in the circuit breaker cabinet is OFF.
2. Slide charging station onto backplate and press down firmly until you hear the station click into position.



3. Make sure the station is fully seated.
4. Turn power ON at the circuit breaker panel.

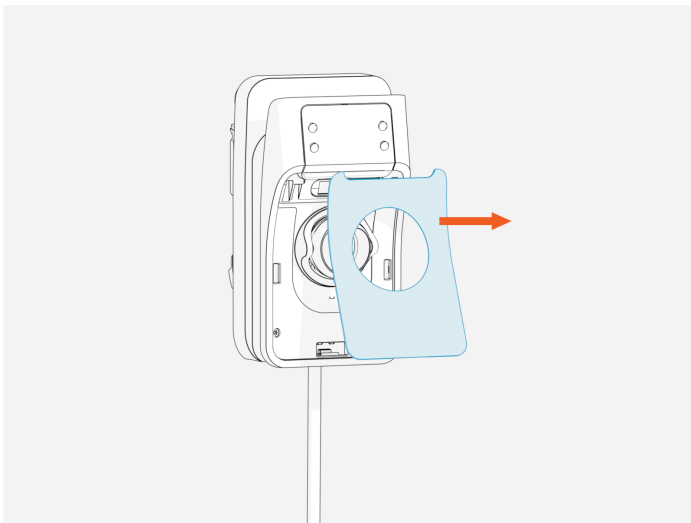
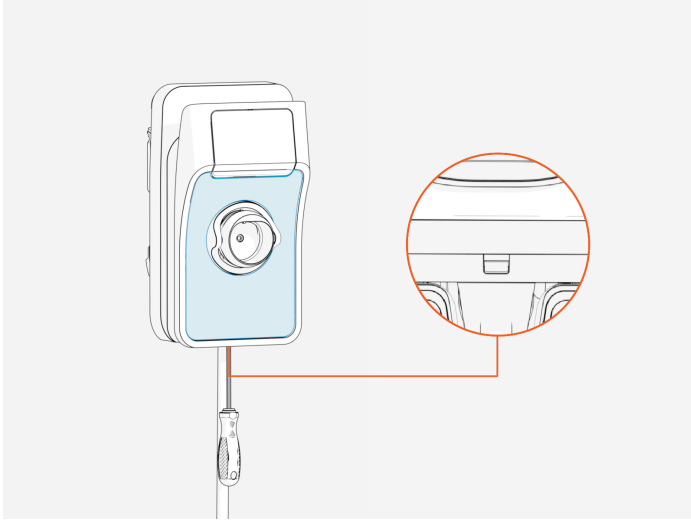
Status LEDs should be visible within 30 seconds.

The station should be ready to start the installation and commissioning procedure two minutes after applying power.

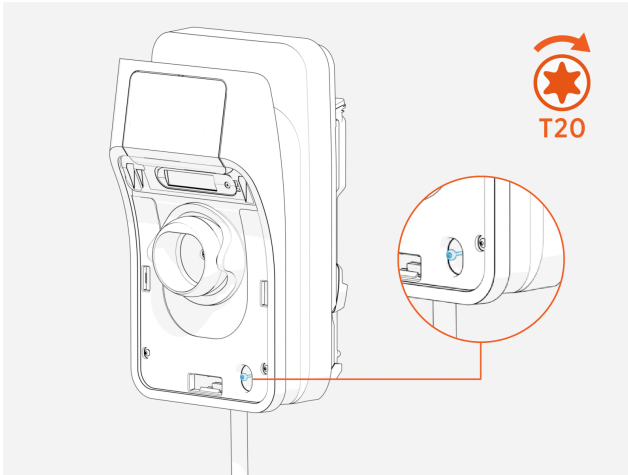
Lock the Charging Station (Optional)

To provide security, charging stations can be locked onto the backplate. If you want to install a locking screw, complete the steps in this section. If you do not plan to lock the charging station, skip to [Uncoil Charging Cables](#).

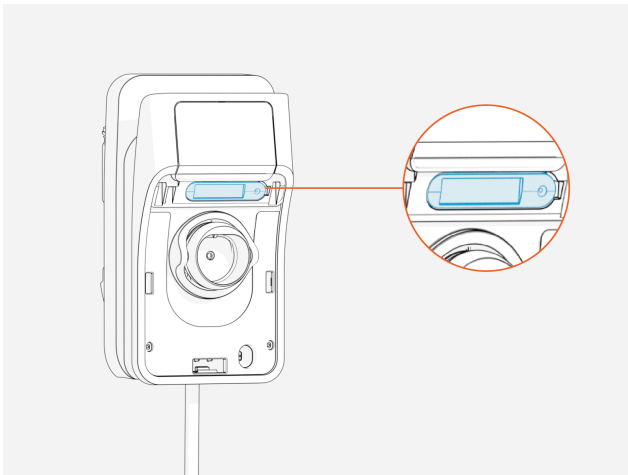
1. Remove the faceplate.



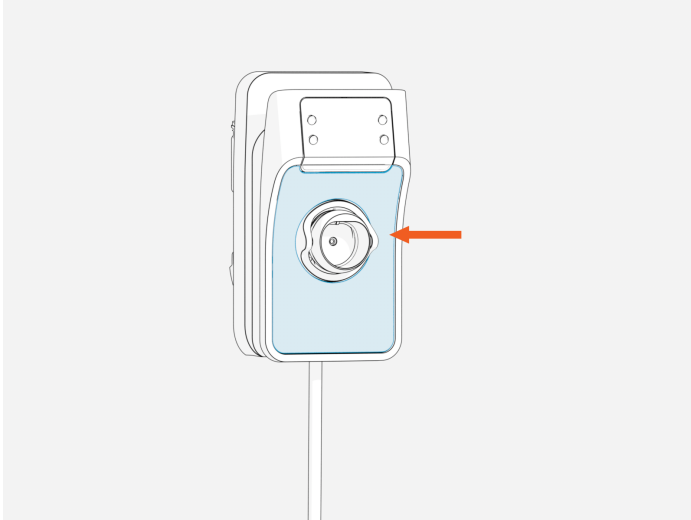
2. Insert the locking screw into the hole on the lower right side of the station. Use a T20 driver to tighten the locking screw.



IMPORTANT: Opening the SIM access flap will trigger a tamper alarm and lock the unit from functioning.



3. Reinstall the faceplate. If you're installing the faceplate on a socketed station, lift the holster flap before sliding the faceplate onto the station.

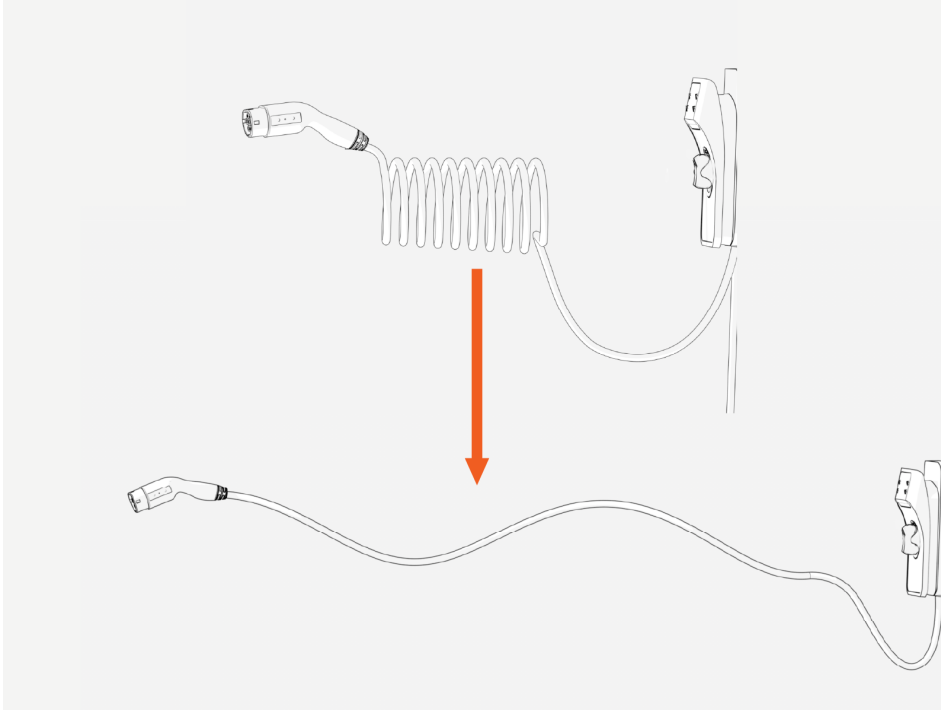


NOTE: If unlocking is required, the steps should be reversed to remove the locking screw.

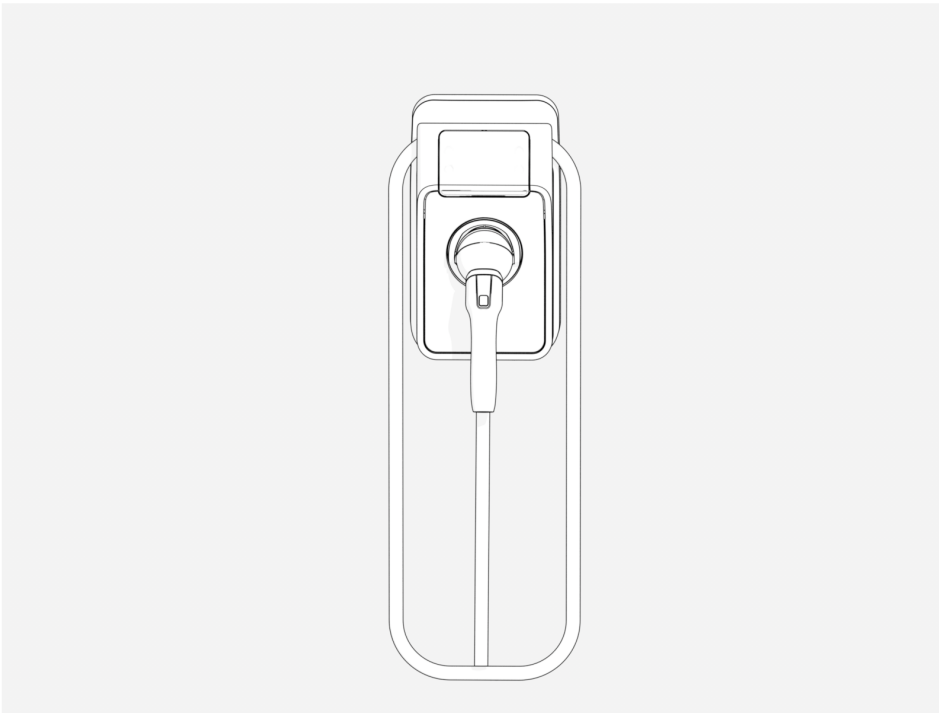
Uncoil Charging Cables

If your station does not have a tethered/connected charging cable, skip to [Complete Station Setup](#).

1. Stations with cables only - Uncoil the charging cable by gently extending it all the way out and away from the station. Rotate the plug as needed to remove any twist or kinks.



2. Stations with cables only - Drape the charging cable over the top of the charging station.



3. Stations with cables only - Insert the connector in its holster.
4. Continue to Complete Station Setup.

Complete the Station Setup 5

Complete the ChargePoint Installer training successfully. Receive instructions for login to your ChargePoint installer account. To complete the next steps, you need:



- ChargePoint Installer account login.
- ChargePoint Installer app installed on a smartphone (iOS/Android version 11 or higher).
- The exact location where the Flex Series charging station is physically installed.
- Flex Series station ID QR code (found either on top of the plastic protective film or underneath the faceplate).



Configure the Station

If your smartphone does not have the ChargePoint Installer app installed:

- 1. Open a QR code scanning app.
- 2. Scan the QR code to download the app and sign up if necessary.

Click this QR code if you have an Android device.	Click this QR code if you have an iOS device.
	

- 3. The app automatically redirects you to the ChargePoint Installer app.
- 4. Follow the instructions within the app to configure the charging station.
- 5. Remove the ID QR code label from the station and give it to the station owner for safe keeping.



Remove the ID QR code label from the station.

Unlock the Charging Station (Optional)

To provide security, charging stations can be locked onto the backplate.

If you need to unlock a station, follow these steps:

1. Disconnect power to the charging station.

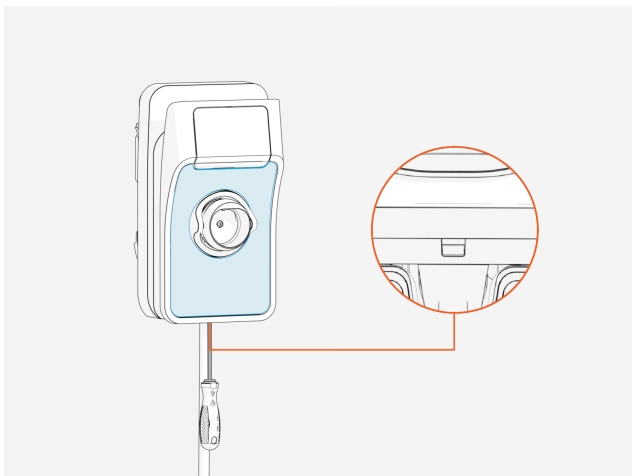


DANGER: RISK OF SHOCK

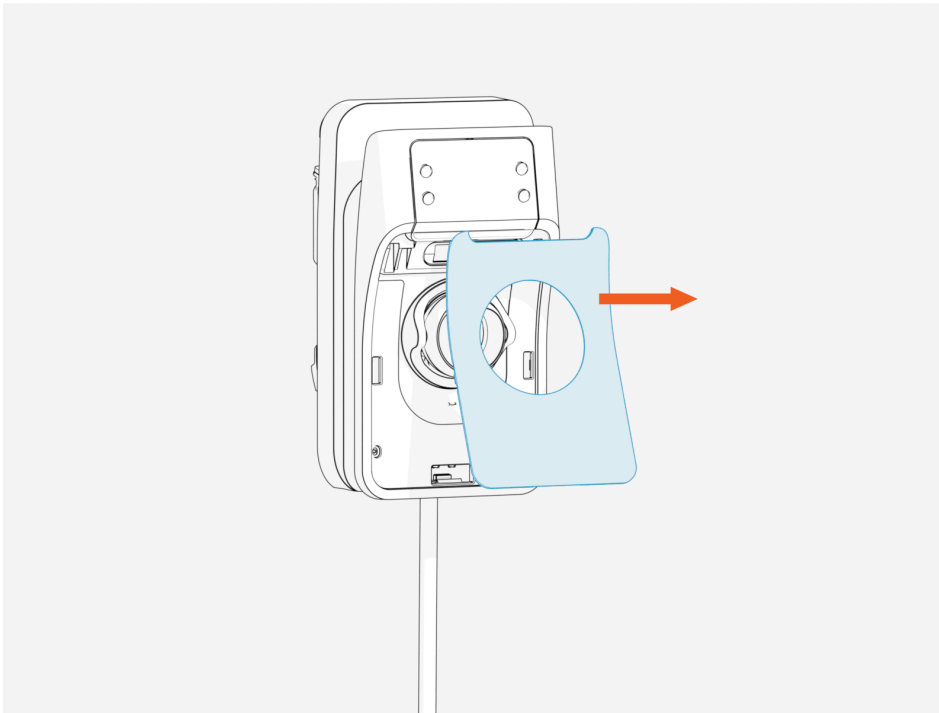
- Before any procedure, the technician must disconnect the power.
- Follow local code to de-energise the applicable circuit and lock out/tag out the disconnect before proceeding. Use a multimeter to test that power is off.
- Keep the power off until the top cap is correctly reinstalled and the work is complete.

FAILURE TO FOLLOW THESE INSTRUCTIONS CAN RESULT IN SERIOUS INJURY, LOSS OF LIFE OR PROPERTY DAMAGE.

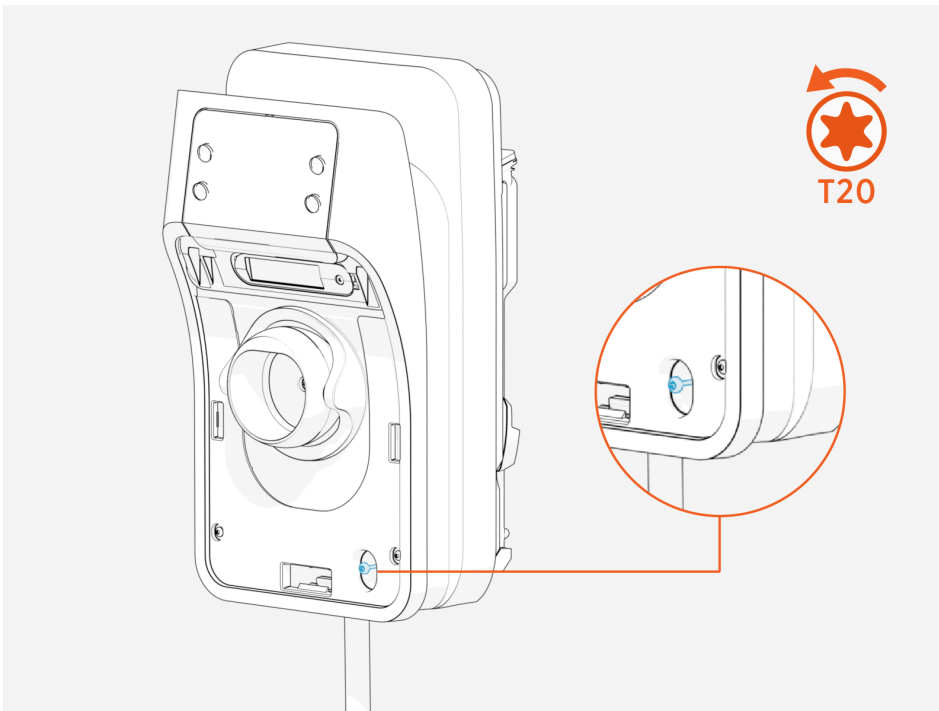
2. Pull the latch on the bottom of the faceplate toward you to release the faceplate.



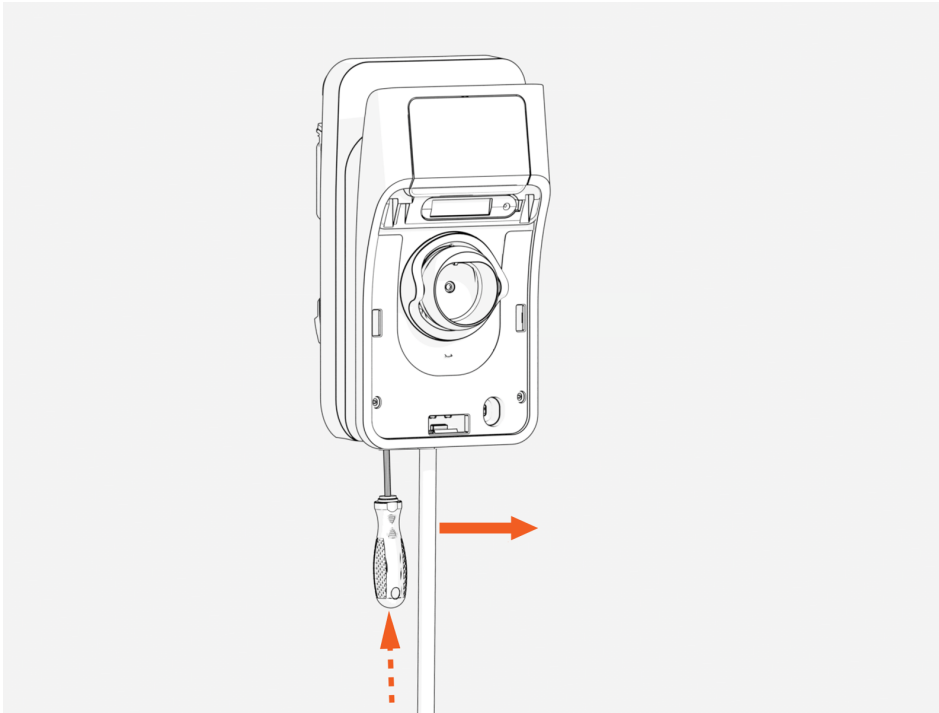
3. Grasp the sides of the faceplate and remove it.



4. Remove the locking screw on the lower right side of the charging station.



5. Insert a screwdriver into the left most hole underneath the station and pull the driver towards you to release the security latch.



6. Push the station up to remove it.



Activate the Station

Once the configuration is complete, activate the ChargePoint Flex series station using the ChargePoint Driver mobile app. Activation must be completed before you can start a test or charging session.

Start a Charging Session

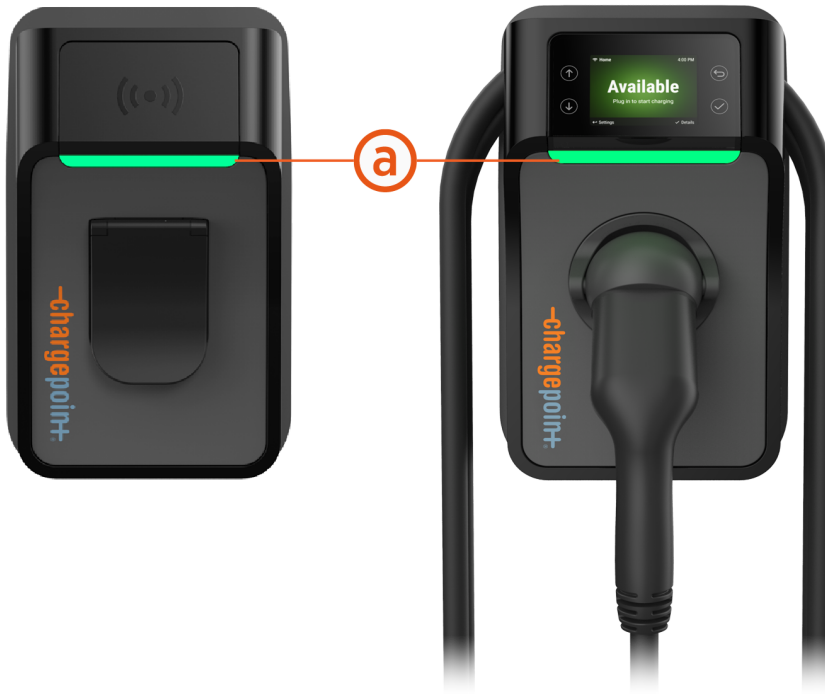
If you have not installed the faceplate, install it now.













Once the configuration is complete, the ChargePoint Driver app is required to activate and start a test session. Verify that the station owner can:

- Initiate a charging session
- Plug the cable into the charging station (if the station has a socket), or
- Plug the cable into a vehicle (if available)

Guide to LED colours

When the station is powered on and activated, the status light **(a)** on the front of the station displays status via light colour and pulsing.

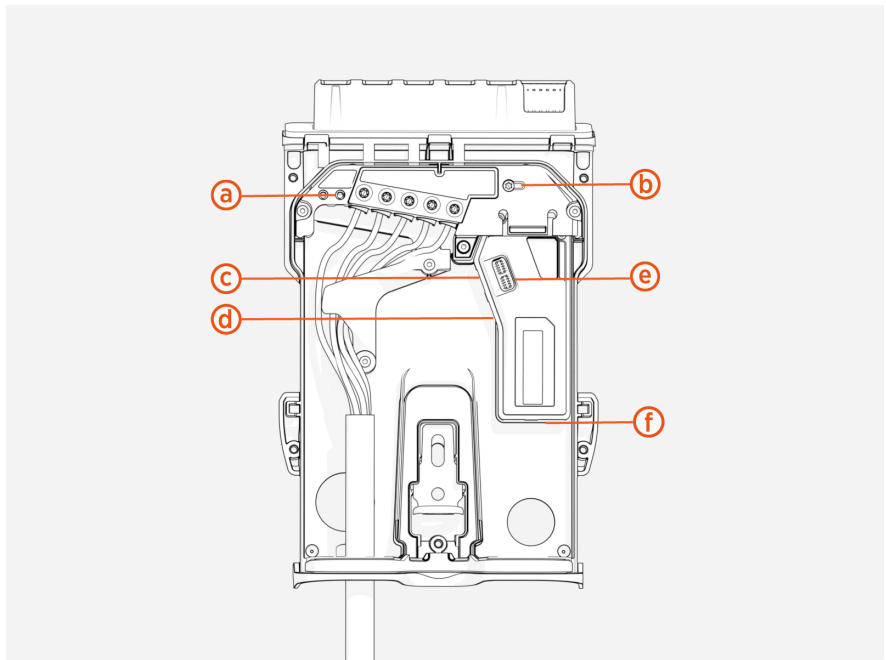


Status Light Colour		Operating definitions
	Light blue	Vehicle plugged in, waiting for power release (for example, due to energy management)
	Blue, pulsing	Charging a vehicle
	Blue, solid	Charging complete, charging stopped, or charging suspended
	Green, pulsing	Card authorisation
	Green	Available and ready to charge
	Orange, solid	Online, waiting for a reservation
	Orange, pulsing	Card authorisation time
	Red	Out-of-service or disabled
	Yellow, pulsing	Installing software or rejecting card (flash yellow for 3 seconds) also occurs during first boot-up when the station is not activated.
	White, pulsing	Installing software or running a self-test
	White	Offline or unavailable
	Purple	Account has not been authenticated, return holster to station

Optional Energy Management Settings A

ChargePoint Flex Series charging station support the following energy management solutions:

- (a)** Shunt trip
- (b)** Current dial
- (c)** Smart meter
- (d)** Ethernet
- (e)** J1/J2 jumpers
- (f)** Current Transformers



Shunt Trip Wire

If local regulations require that the charging station be connected to an RCD with shunt trip capability, use a 4.5 mm flathead screwdriver to connect the shunt trip wire.

Label	Meaning	Notes
L1	L1 connection to shunt trip	Connect to external shunt trip Line Connection if shunt trip action is required on detection of DC leakage fault
N	Neutral connection to shunt trip	Connect to external shunt trip Neutral if shunt trip action is required on detection of DC leakage fault

- Shunt trip must be rated to 230 VAC (L-N) - Do not use DC input shunt trip.
- Use wire strippers to remove 6–7 mm of wire insulation for installation into back plate shunt trip connector.
- Acceptable wire sizes are 0.5–2.5 mm²

Smart Meter Functionality

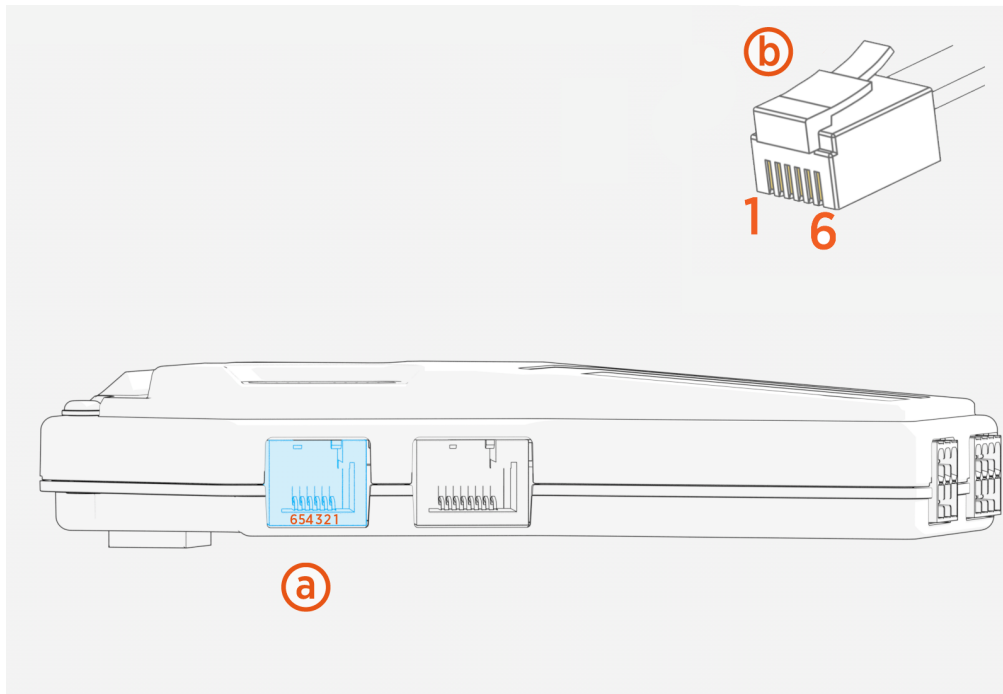
Local regulations may require smart meter functionality. The RJ12 connector is dedicated for smart metering functions. Determine your smart meter type and adjust J1 and J2 jumpers accordingly.

After connecting your smart meter to the RJ12 socket, configure load management settings in the ChargePoint Installer app.

Pin/Function	Linky	P1/DSMR	EnWG	MODBUS RS-485	MODBUS RS-232
1	NC	+5V	NC	NC	NC
2	NC	Data Request	NC	NC	NC
3	Linky 1	Data GND	Contact 1	RS-485 B	GND
4	NC	NC	NC	NC	NC
5	Linky 2	Data Line	Contact 2	RS-485 A	Data In
6	NC	Power GND	NC	GND	NC

(a) Smart meter socket with pin orientation

(b) Connector at end of cable with pin orientation



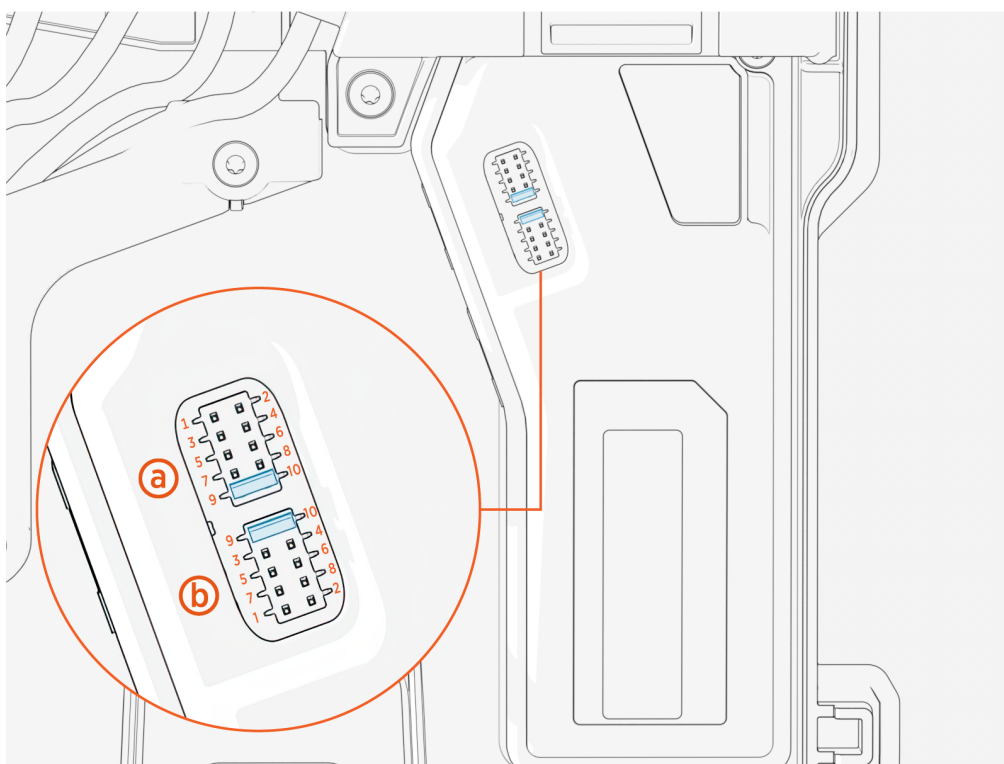
Smart meter type	J1/J2 Position
MODBUS RS-485 Smart Meter	1-2
Linky	3-4
MODBUS RS-232 Smart Meter	5-6
P1/DSMR	5-6
EnWG Dry Contacts	7-8
No Meter	9-10

No Meter (J1/J2 Position 9-10)

When a meter is not connected, place the jumpers in this location:

(a) Jumper 1

(b) Jumper 2

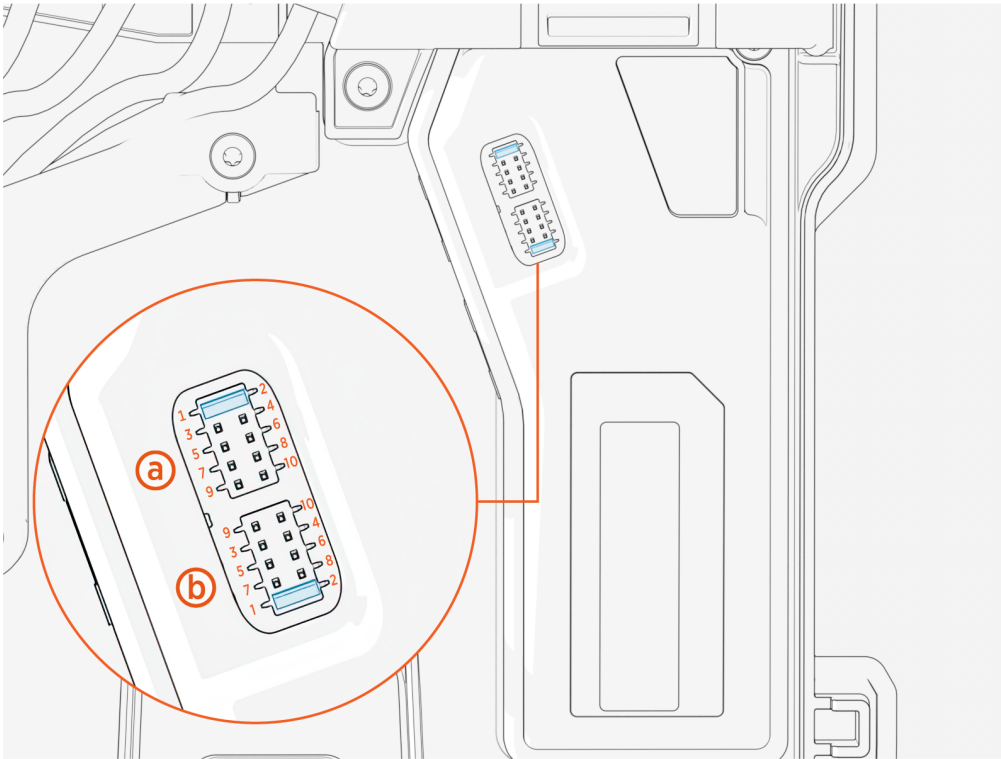


MODBUS RS-485 (J1/J2 Position 1-2)

For MODBUS RS-485, place the selection jumpers here:

(a) Jumper 1

(b) Jumper 2

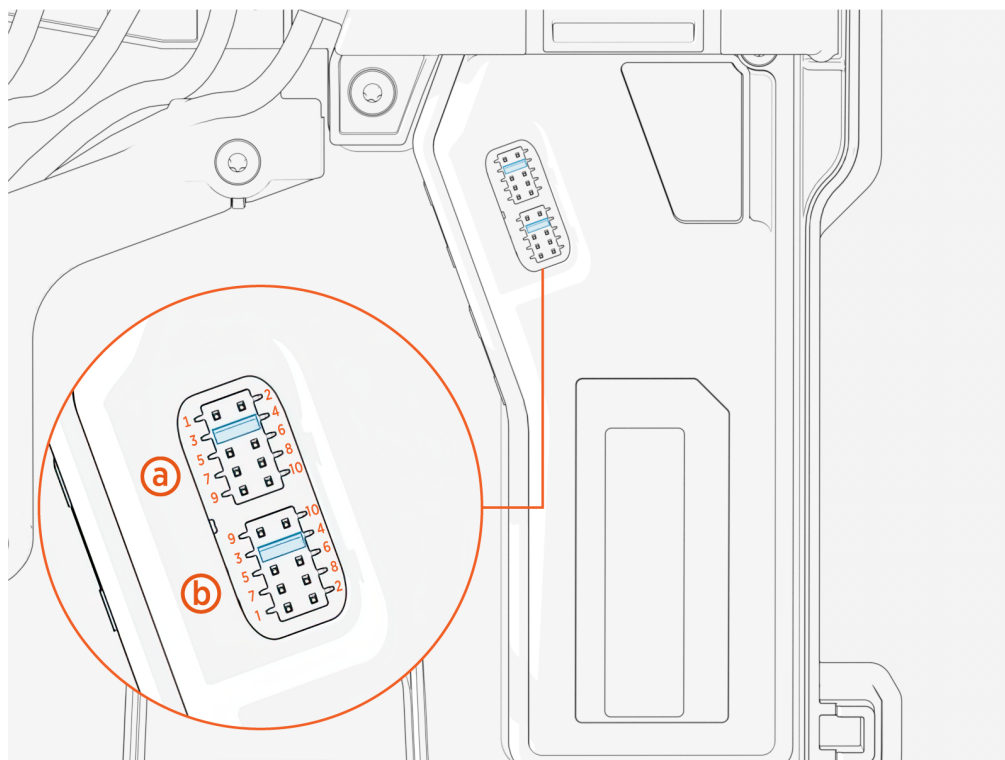


Linky (J1/J2 Position 3-4)

For Linky, place the selection jumpers here:

(a) Jumper 1

(b) Jumper 2

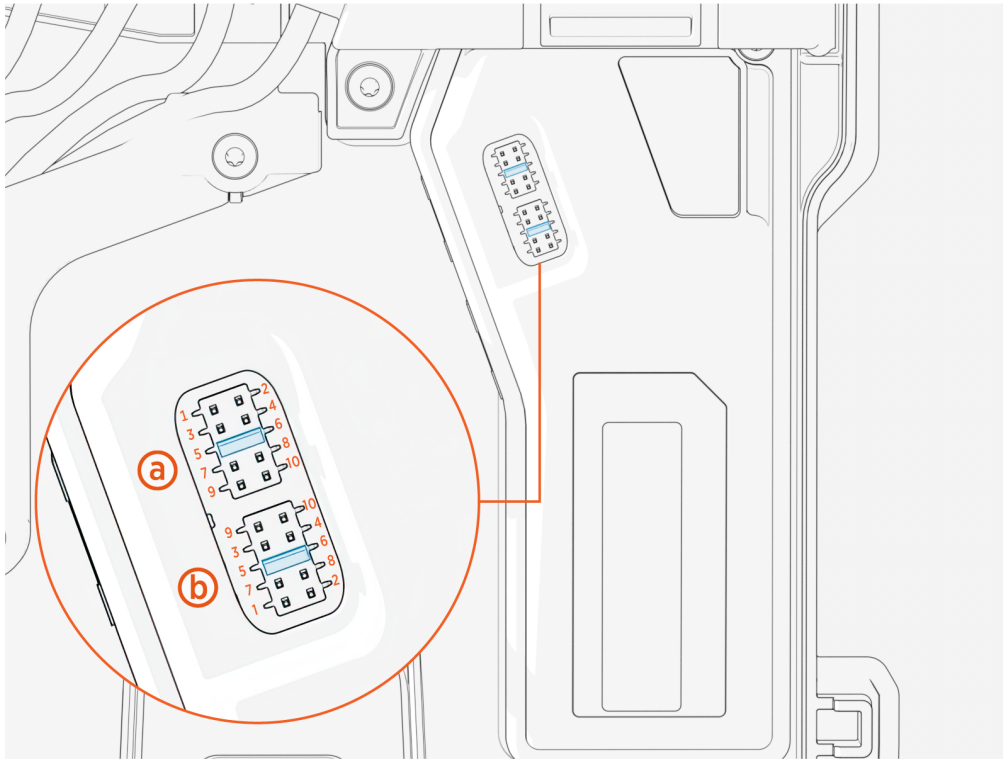


P1/DSMR (J1/J2 Position 5-6)

For P1/DSMR, place the selection jumpers here:

(a) Jumper 1

(b) Jumper 2

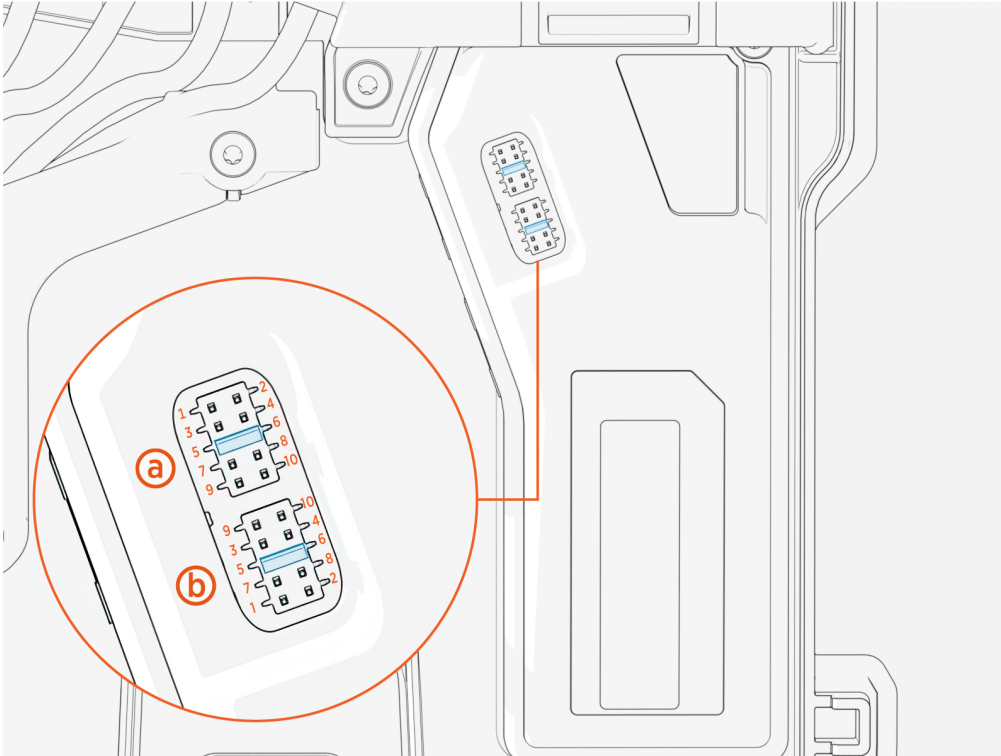


MODBUS RS-232 (J1/J2 Position 5-6)

For MODBUS RS-232, place the selection jumpers here:

(a) Jumper 1

(b) Jumper 2

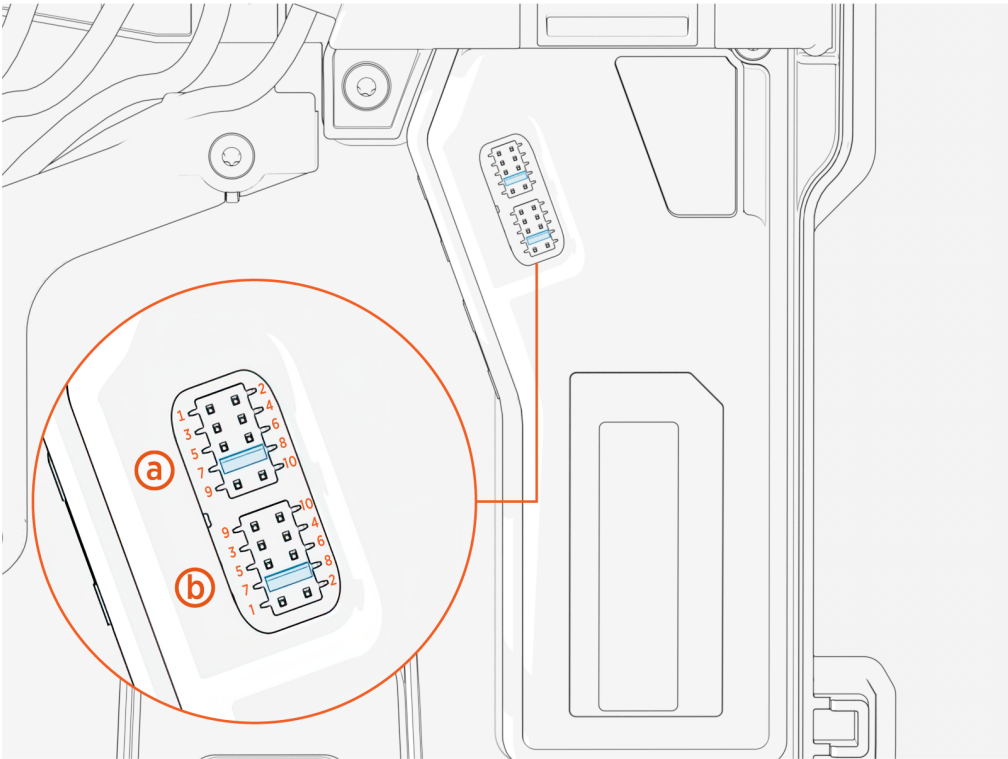


EnWG Dry Contacts (J1/J2 Position 7-8)

For EnWG dry contacts, place the selection jumpers here:

(a) Jumper 1

(b) Jumper 2



TCP/IP meters should be plugged into the same Local Area Network (LAN) as the ChargePoint Flex Series charging station. Note the IP address so you'll have it handy when you configure this detail in the ChargePoint Installer app.

Supported models appear below:

Meter	Connection Method
Siemens PAC2200	MODBUS TCP via Ethernet RJ45 Port

Ethernet

Ethernet can be used to connect the charging station to a supported smart meter via MODBUS TCP/IP using an Ethernet RJ45 port. Ensure the meter is plugged into the same Local Area Network (LAN) as the charging station and note the meter's IP address for configuration. For correct operation of Dynamic Load Management (DLM), configure the connection and settings in the ChargePoint Installer app.

Current Transformers (CT)

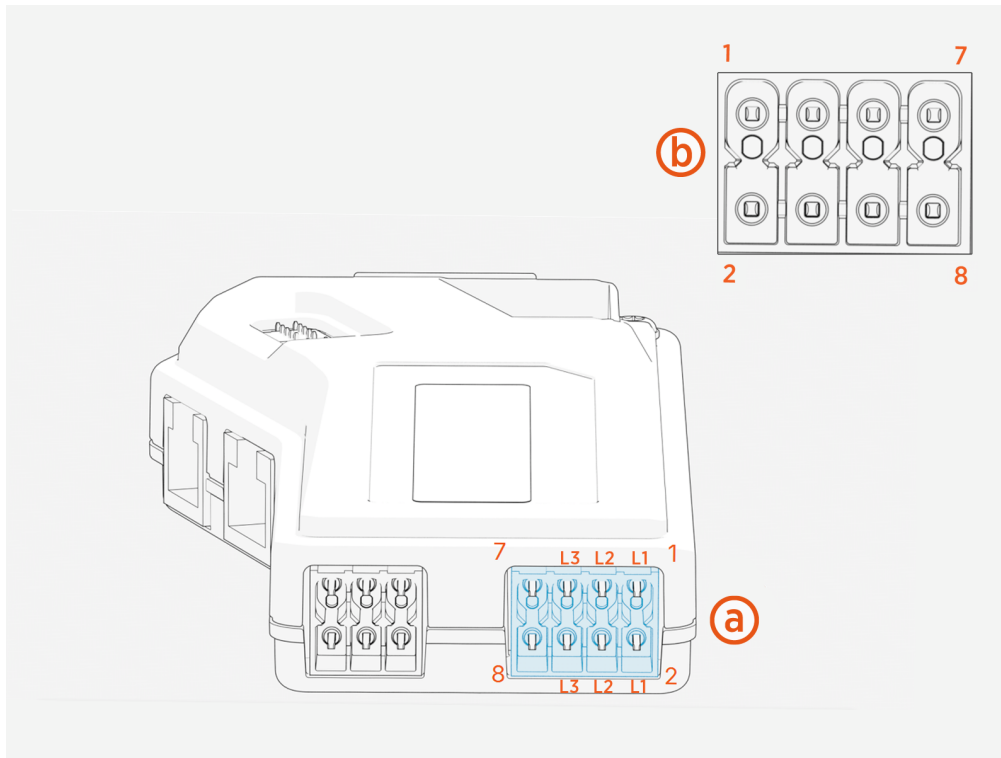
Local regulations may require that you connect one or more CTs. The CT has a directional arrow in the middle of the core. This should be installed on the conductor pointing in the same directional flow of the current. Use the ChargePoint Installer app to configure load management settings.

Use included connector to connect external CTs.

CTs are pre-wired into an 8-pin plug. Insert the plug into the CT connector shown below.

(a) CT socket with pin orientation

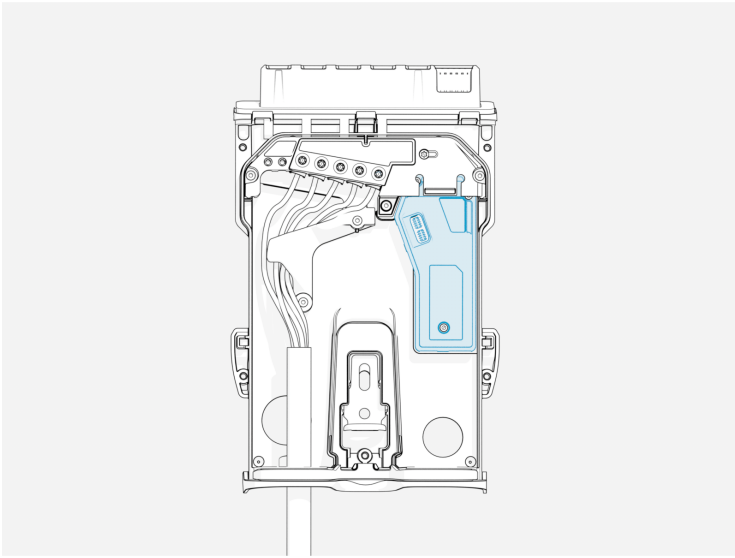
(b) CT connector at end of cable with pin orientation



Pin	Connection
1	CT1 Negative
2	CT1 Positive
3	CT2 Negative
4	CT2 Positive
5	CT3 Negative
6	CT3 Positive

Expected configuration is CTs with a current of 100 A and output voltage of 333 mV (burden resistor included).

For correct operation of DLM (Dynamic Load Management), use the ChargePoint Installer app to configure station.



Limited Warranty Information and Disclaimer

The Limited Warranty you received with your charging station is subject to certain exceptions and exclusions. For example, your use of, installation of or modification to the ChargePoint® charging station in a manner in which the ChargePoint® charging station is not intended to be used or modified will void the limited warranty. You should review your limited warranty and become familiar with the terms thereof. Other than any such limited warranty, the ChargePoint products are provided "AS IS", and ChargePoint, Inc. and its distributors expressly disclaim all implied warranties, including any warranty of design, merchantability, fitness for a particular purposes and non-infringement to the maximum extent permitted by law.

Limitation of Liability

CHARGEPOINT IS NOT LIABLE FOR ANY DIRECT, INDIRECT, INCIDENTAL, SPECIAL, PUNITIVE OR CONSEQUENTIAL DAMAGES, INCLUDING WITHOUT LIMITATION LOST PROFITS, LOST BUSINESS, LOST DATA, LOSS OF USE, OR COST OF COVER INCURRED BY YOU ARISING OUT OF OR RELATED TO YOUR PURCHASE OR USE OF, OR INABILITY TO USE, THE CHARGING STATION, UNDER ANY THEORY OF LIABILITY, WHETHER IN AN ACTION IN CONTRACT, STRICT LIABILITY, TORT (INCLUDING NEGLIGENCE) OR OTHER LEGAL OR EQUITABLE THEORY, EVEN IF CHARGEPOINT KNEW OR SHOULD HAVE KNOWN OF THE POSSIBILITY OF SUCH DAMAGES. IN ANY EVENT, THE CUMULATIVE LIABILITY OF CHARGEPOINT FOR ALL CLAIMS WHATSOEVER RELATED TO THE CHARGING STATION WILL NOT EXCEED THE PRICE YOU PAID FOR THE CHARGING STATION. THE LIMITATIONS SET FORTH HEREIN ARE INTENDED TO LIMIT THE LIABILITY OF CHARGEPOINT AND SHALL APPLY NOTWITHSTANDING ANY FAILURE OF ESSENTIAL PURPOSE OF ANY LIMITED REMEDY.