



ChargePoint® Home

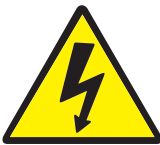
# Installation Guide



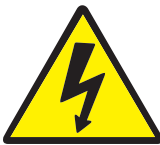
# Contents

1

|                                 |    |
|---------------------------------|----|
| Installation Guide .....        | 3  |
| Professional Electricians ..... | 8  |
| Safety Instructions .....       | 10 |
| Color Status Key .....          | 11 |



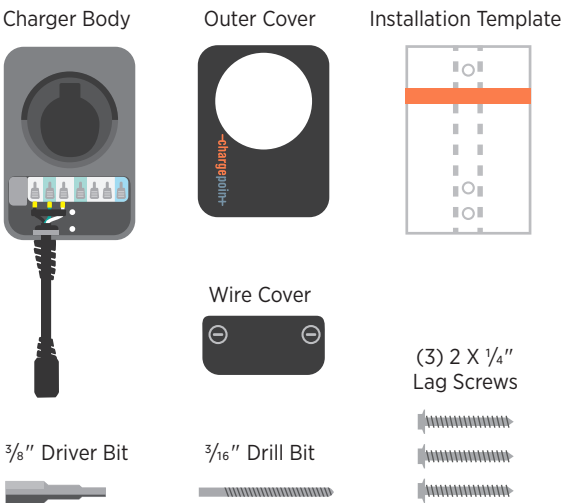
**DANGER RISK OF SHOCK**  
**Turn off circuit breaker to 240V outlet.**  
DO NOT RESTORE POWER TO OUTLET UNTIL LAST STEP.  
Failure to follow these instructions could result  
in shock or electrocution.



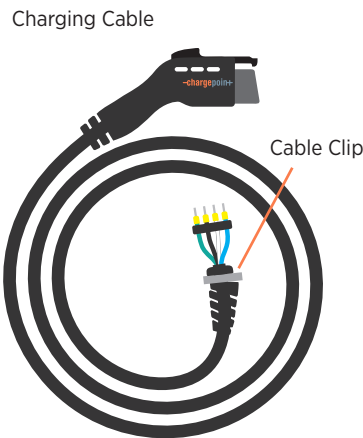
- 1
- Remove contents of boxes and remove wrap from the charging station. Make sure you are not missing any parts.

**If your electrician has installed ChargePoint Home, skip to Professional Electricians on page 8.**

**Charging Station Box:**

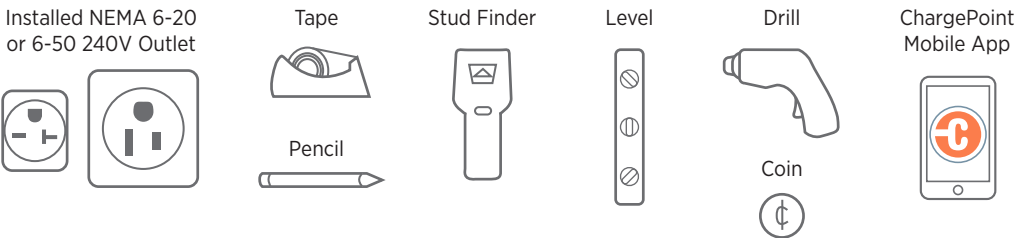


**Charging Cable Box:**



If you are missing any of these parts, please call 1.888.758.4389

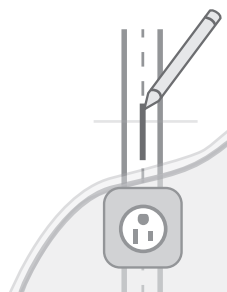
**Other items you will need:**



For an online video of these instructions, go to [chargepoint.com/home](https://chargepoint.com/home) or use the ChargePoint mobile app.

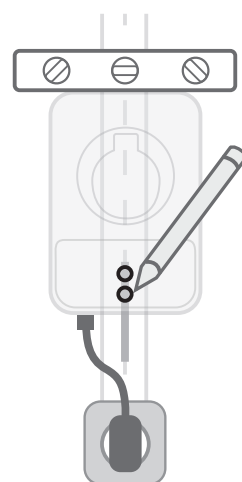
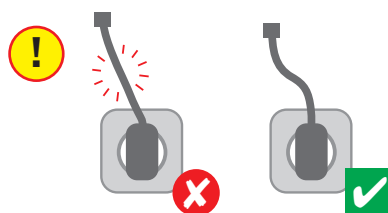
2 You'll need to install the station into a wall stud and at the right height from your power outlet. To begin, use a stud finder to locate and mark the center line. The stud may be to the front, left, or right of the outlet.

To find the station's ideal mounting height, use the body of the charging station. Plug the station into the outlet. If the light comes on, your power is still live. Unplug the station and turn off the power to the outlet at the circuit breaker.



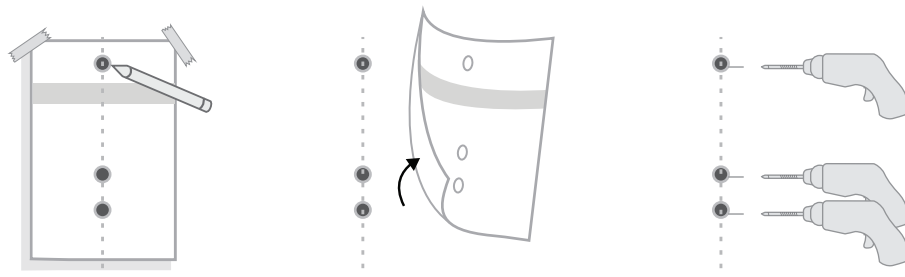
If the status light turns on when the station is plugged in, your circuit is not off. **Stop immediately.** Unplug the station and turn off the power to the outlet at the circuit breaker.

3 Now, hold the station to the mounting surface so that the bottom two mounting holes line up with the center line marked on the stud. Make sure the station is level, and mark the two lower mounting holes. Be sure the power cable has a gentle curve but is not stretched. Now unplug the station and put it aside.



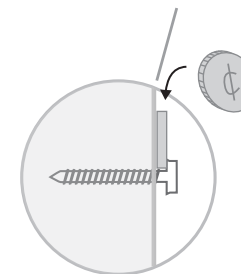
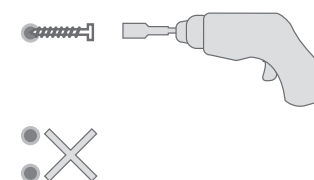
4 To mark the top of the mounting hole, place the installation template so that the two pre-cut lower holes show your earlier marks. When the holes are aligned, tape the template in place, mark the top mounting holes and remove the template.

To continue, drill the three marked mounting holes using the drill bit that came with your station. If you hit metal, stop immediately to avoid damaging any service conduits, and contact an electrician.

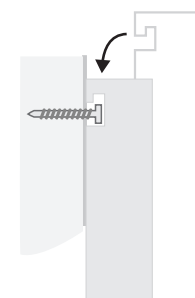


5 Using the driver bit, partially install only one of the screws into the top-most mounting hole. The screw should protrude so that you can hang the station on it. Don't install the remaining two screws right now — you'll install them later.

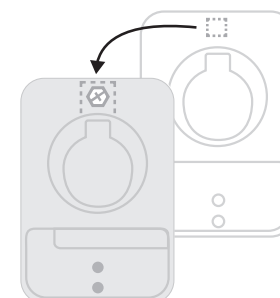
(1) 2" screw



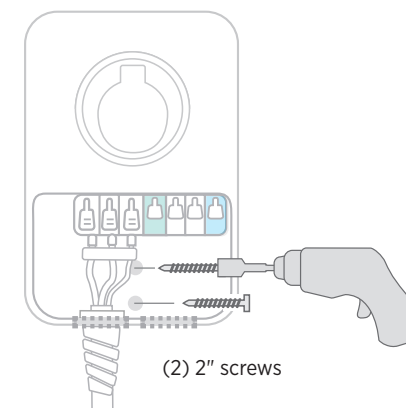
6 Hang the station on the protruding screw head using the notch in the back of the station. Don't plug the station in yet. Drive the two bottom screws into the bottom mounting holes to firmly secure the station. Be careful not to damage the electrical wires.



Side view

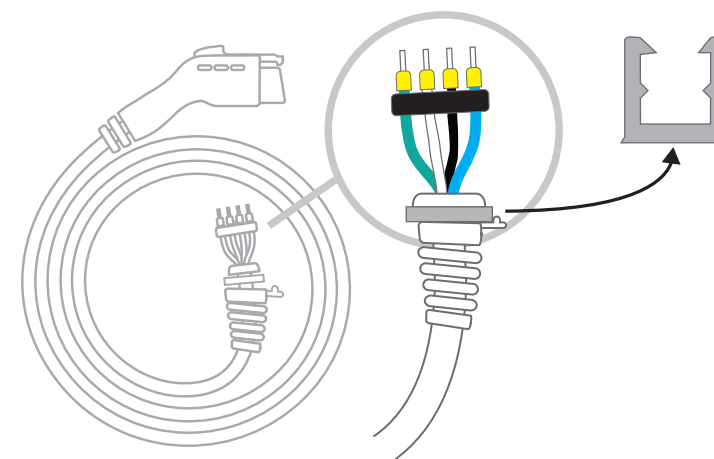


Front view

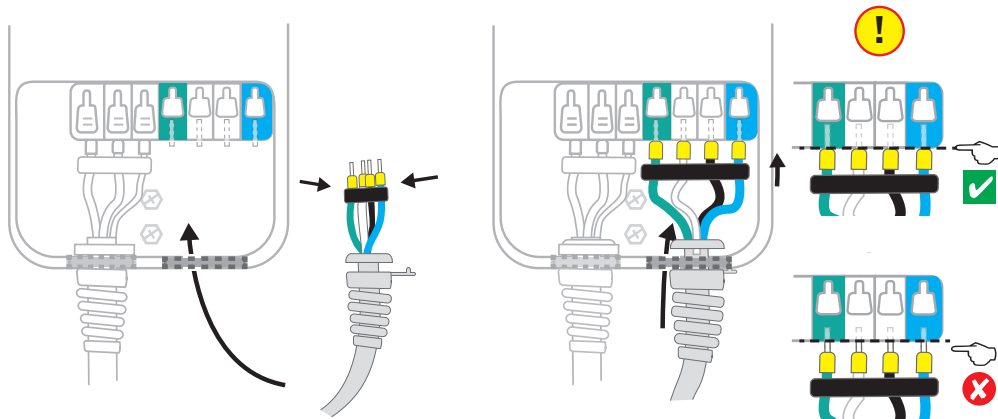


(2) 2" screws

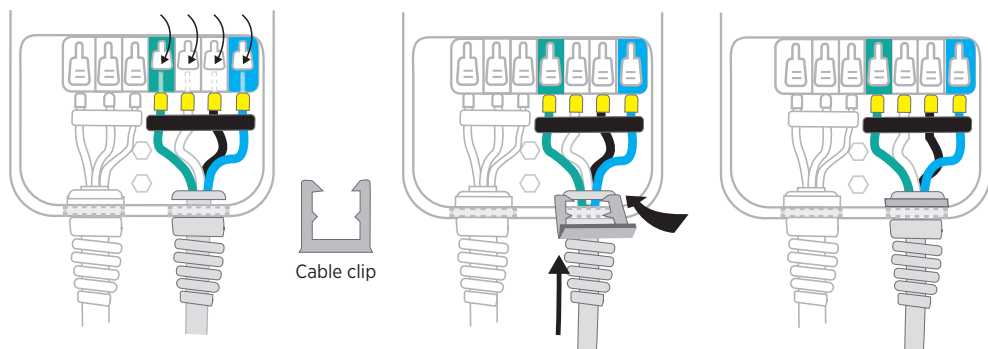
7 Now, take the charging cable and lay the charging connector on the ground. Remove the cable clip that's connected to the wire end of the cable, but do not discard it.



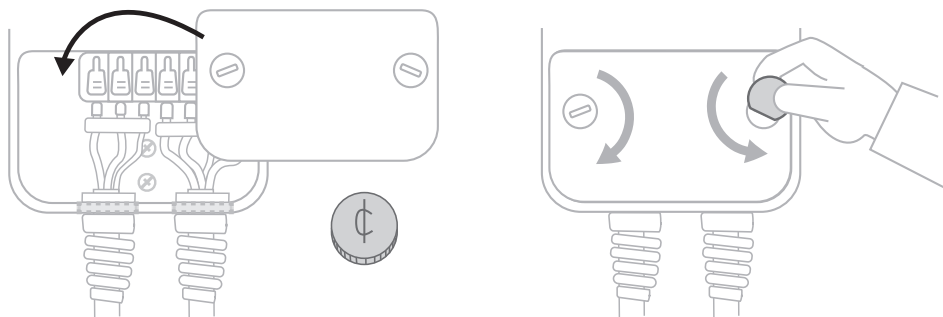
- 8 Roll the wire ends so they fit into the bottom hole of the station. Match the blue and green wires to the blue and green connector blocks. Insert the exposed wires into the corresponding holes, pushing the cable up until the yellow is flush with the connector blocks.



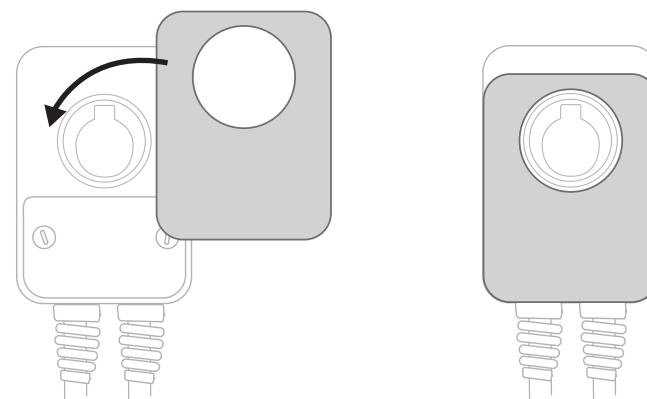
- 9 Snap down the white clips ALL THE WAY to hold the cable in place. Push the cable up and slide the cable clip around the cable so that it snaps into place. The cable clip protects the cable from damage.



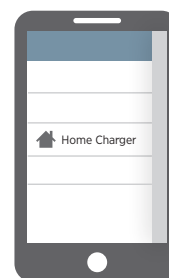
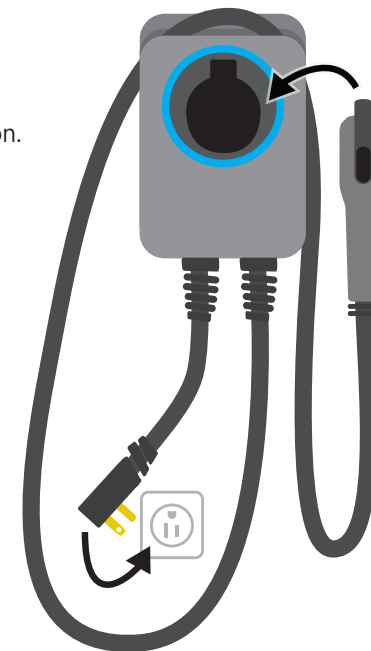
- 10 The charging connection and cable that you installed should look like the factory installed power cable to the left inside the station. Lock the wire in place using a coin. To avoid damage to plastic do not use a screw driver.



- 11 Snap the cover plate on the station.



- 12 Wrap the charging cable over the top, and plug the connector into the holder. Plug the station into the outlet, and then restore power to the outlet. The white light status light should turn on.



After installing your ChargePoint Home, download the ChargePoint mobile app to connect to your charger.

# For Professional Electricians

Tips to successfully install electrical service for the ChargePoint Home Charger

- ✓ Use the correct outlet for the charger, and make sure the panel has enough capacity.

## ChargePoint Home 12

Use a **NEMA 6-20** outlet for the charger. The panel needs **20 amp** service.



## ChargePoint Home 25

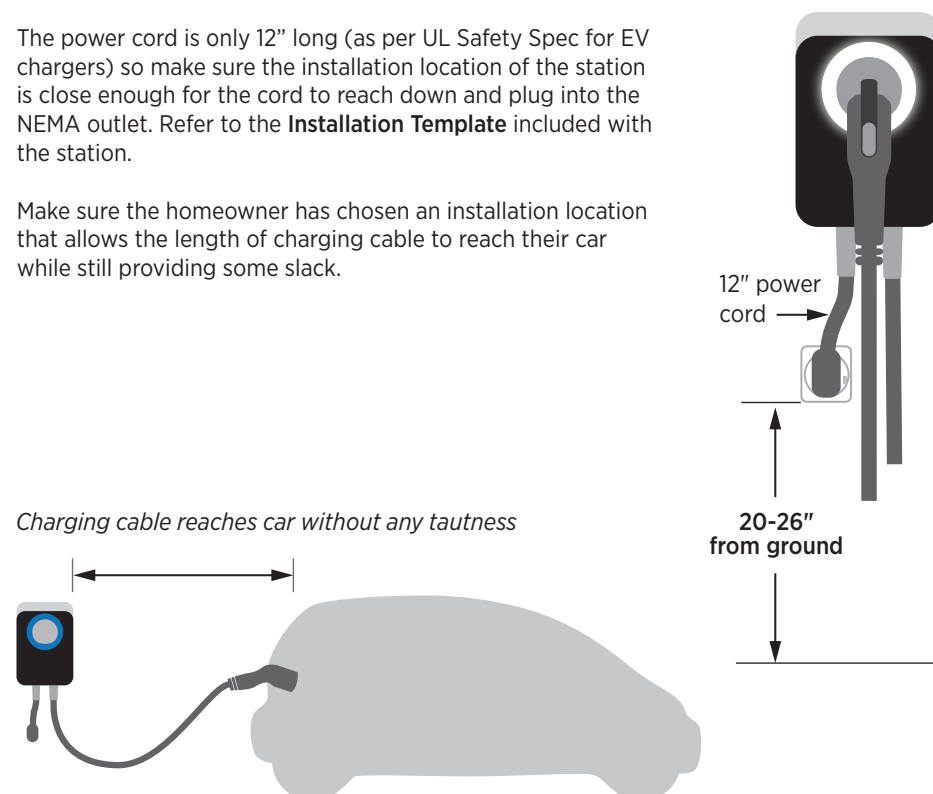
Use a **NEMA 6-50** outlet for the charger. The panel needs **40 amp** service.



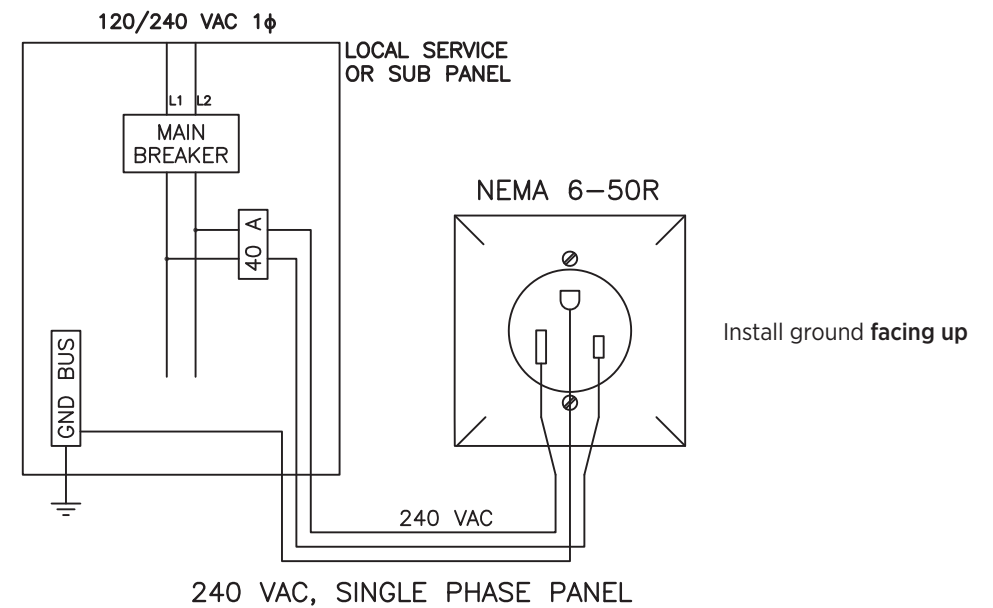
- ✓ The NEMA outlet should be located **20-26"** from the ground.

The power cord is only 12" long (as per UL Safety Spec for EV chargers) so make sure the installation location of the station is close enough for the cord to reach down and plug into the NEMA outlet. Refer to the **Installation Template** included with the station.

Make sure the homeowner has chosen an installation location that allows the length of charging cable to reach their car while still providing some slack.

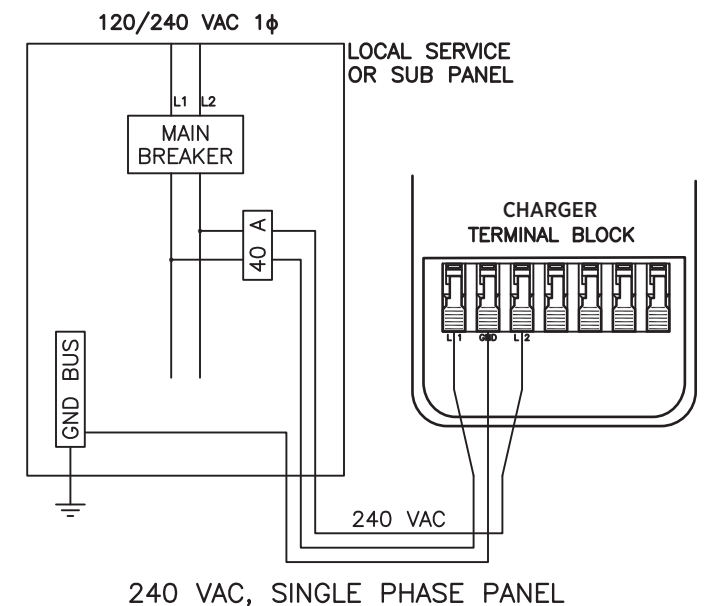


- ✓ Make sure charging station is wired correctly (Neutral is not required).



For **hardwired** installation only:

- Use 3/4" conduit
- Use appropriate fittings for connection
- Trim wire ends to 1/2"
- Insert wires fully into charger terminal block



## Questions?

- ☎ Call U.S. and Canada toll-free: 1.888.758.4389 (24 hours)
- @ Email [support@chargepoint.com](mailto:support@chargepoint.com)

## IMPORTANT SAFETY INSTRUCTIONS

### INSTRUCTIONS PERTAINING TO A RISK OF FIRE OR ELECTRIC SHOCK:

**WARNING:** When using electric products, basic precautions should always be taken, including the following. This manual contains instructions that shall be followed during installation, operation and maintenance of the unit.

- For permanently connected (hardwired) charging stations, ChargePoint Home must be installed by a qualified electrician and in accordance with all local electrical codes and ordinances.
- Read all instructions before installing and using ChargePoint Home. All documents can also be found online at [chargepoint.com/home](https://chargepoint.com/home).
- Adult supervision is required when using ChargePoint Home near children.
- Do not operate your ChargePoint Home if there is visible damage to the unit or charging cable. Call ChargePoint customer support immediately at 1-888-758-4389.
- Do not put fingers into the charging connector.
- Do not install ChargePoint Home near flammable, explosive, or combustible materials.
- Do not operate ChargePoint Home in temperatures outside its operating range of -22°F to 122°F (-30°C to +50°C).
- ChargePoint Home contains no user-serviceable parts. Do not attempt to repair or service the unit yourself. If the unit requires servicing, contact ChargePoint, Inc.
- Ensure that the ChargePoint Home charging cable is positioned so it will not be stepped on, tripped over, or subjected to damage or stress. Do not close a garage door on the charging cable!



Symbol for Risk of Shock

### WARNING FOR CHARGEPOINT HOME PLUGGED PRODUCTS:

#### GROUNDING INSTRUCTIONS

ChargePoint Home must be grounded. If it should malfunction or break down, grounding provides a path of least resistance for electric current to reduce the risk of electric shock. This product is equipped with a cord having an equipment grounding conductor and a grounding plug. The plug must be plugged into an appropriate outlet that is properly installed and grounded in accordance with all local codes and ordinances.

**WARNING** – Improper connection of the equipment-grounding conductor may result in a risk of electric shock. Check with a qualified electrician or serviceperson if you are in doubt as to whether the product is properly grounded. Do not modify the plug provided with the product – if it will not fit the receptacle have a proper receptacle installed by a qualified electrician.

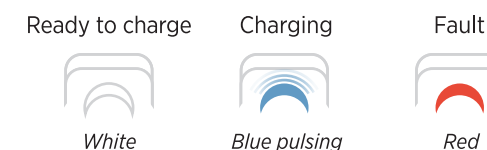
### WARNING FOR PERMANENTLY CONNECTED (HARDWIRED) PRODUCTS:

#### GROUNDING INSTRUCTIONS

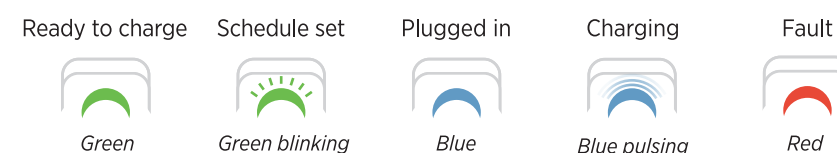
This product must be connected to a grounded, metal, permanent wiring system, or an equipment-grounding conductor must be run with the circuit conductors and connected to the equipment grounding terminal or lead on the product. See Installation Instructions.

## ChargePoint® Home Color Status Key

### Not Connected to Internet



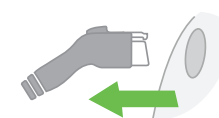
### Connected to Internet



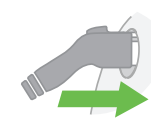
To override a set schedule and start charging immediately:



1. Make sure the connector is plugged into the car



2. Remove the connector from the car



3. Plug back in within 7 seconds

## Questions?

Visit [chargepoint.com/home](https://chargepoint.com/home) or call 1.888.758.4389



ChargePoint, Inc.  
254 East Hacienda Avenue | Campbell, CA | 95008-6617 USA  
US toll free +1.888.758.4389  
[chargepoint.com](https://www.chargepoint.com)