



# CP6000

Networked Charging Station

## CP6000 Adapter Installation Guide

# IMPORTANT SAFETY INSTRUCTIONS

## SAVE THESE INSTRUCTIONS

---

### WARNING:



1. **Read and follow all warnings and instructions before servicing, installing, or operating the ChargePoint® charging station.** Install and operate only as instructed. Failure to do so may lead to death, injury, or property damage, and will void the Limited Warranty.
2. **Only use licensed professionals certified by ChargePoint for installation and service, adhere to all national and local building codes and standards, and ensure compliance** with local building and electrical codes and standards, climate conditions, safety standards, and all applicable codes and ordinances. Inspect the charging station for proper installation before use.
3. **Always ground the ChargePoint charging station.** Failure to ground the charging station can lead to risk of electrocution or fire. The charging station must be connected to a grounded, metal, permanent wiring system, or an equipment grounding conductor shall be run with circuit conductors and connected to the equipment grounding terminal or lead on the Electric Vehicle Supply Equipment (EVSE). Connections to the EVSE shall comply with all applicable codes and ordinances.
4. **Install the ChargePoint charging station on a concrete pad using a ChargePoint-approved method.** Failure to install on a surface that can support the full weight of the charging station can result in death, personal injury, or property damage. Inspect the charging station for proper installation before use.
5. **This charging station is not suitable for use in Class 1 hazardous locations, such as near flammable, explosive, or combustible vapors or gases.**
6. **Supervise children near this device.**
7. **Do not put fingers into the electric vehicle connector.**
8. **Do not use this product if any cable is frayed, has broken insulation, or shows any other signs of damage.**
9. **Do not use this product if the enclosure or the electric vehicle connector is broken, cracked, open, or shows any other signs of damage.**
10. **Use only copper conductor wire rated for 90 °C (194 °F).**



---

**IMPORTANT:** Under no circumstances will compliance with the information in a ChargePoint guide such as this one relieve the user of the responsibility to comply with all applicable codes and safety standards. This document describes approved procedures. If it is not possible to perform the procedures as indicated, contact ChargePoint. **ChargePoint is not responsible for any damages that may result from custom installations or procedures not described in this document or that fail to adhere to ChargePoint recommendations.**

---

## Product Disposal

To comply with Directive 2012/19/EU of the European Parliament and of the Council of 4 July 2012 on waste electrical and electronic equipment (WEEE), devices marked with this symbol may not be disposed of as part of unsorted domestic waste inside the European Union. Enquire with local authorities regarding proper disposal. Product materials are recyclable as marked.



## Document Accuracy

The specifications and other information in this document were verified to be accurate and complete at the time of its publication. However, due to ongoing product improvement, this information is subject to change at any time without prior notice. For the latest information, see our documentation online at [chargepoint.com/eu/guides](https://chargepoint.com/eu/guides).

## Copyright and Trademarks

©2013-2023 ChargePoint, Inc. All rights reserved. This material is protected by the copyright laws of the United States and other countries. It may not be modified, reproduced, or distributed without the prior, express written consent of ChargePoint, Inc. CHARGEPOINT is a US, UK, and EU registered trademark and service mark of ChargePoint, Inc. and cannot be used without the prior written consent of ChargePoint.

## Symbols

This guide and product use the following symbols:



**DANGER:** Risk of electric shock



**WARNING:** Risk of personal harm or death



**CAUTION:** Risk of equipment or property damage



**IMPORTANT:** Crucial step for installation success



Read the manual for instructions



Ground/protective earth

## Illustrations Used in This Document

The illustrations used in this document are for demonstration purposes only and may not be an exact representation of the product. However, unless otherwise specified, the underlying instructions are accurate for the product.



# Contents

IMPORTANT SAFETY INSTRUCTIONS .....	ii
<b>1 Introduction .....</b>	<b>i</b>
Before You Begin .....	i
Check Site Readiness .....	ii
<b>2 Remove CP4000 .....</b>	<b>3</b>
Required Tools and Equipment .....	3
Disconnect CP4000 .....	4
Remove CP4000 .....	9
<b>3 Install CP6000 Adapter Plate .....</b>	<b>11</b>



# Introduction 1

This document describes how to install an adapter that allows a CP6000 pedestal mount charging station to replace a CP4000 pedestal mount station. The adapter changes the locations of anchor bolts to fit the CP6000 locations.

## Before You Begin

---

### **DANGER:** RISK OF SHOCK



- Before any procedure, the technician must disconnect the power.
- Follow local code to de-energize the applicable circuit and lock out/tag out the disconnect before proceeding. Use a multimeter to test that power is off.
- Keep power off until top cap is correctly reinstalled and the work is complete.

FAILURE TO FOLLOW THESE INSTRUCTIONS CAN RESULT IN SERIOUS INJURY, LOSS OF LIFE, OR PROPERTY DAMAGE.

---

**IMPORTANT:** You must be a licensed electrician and complete online training to become a ChargePoint certified installer. If you do not complete training, you cannot access the ChargePoint network to complete installation.



Find online training at: [chargepoint.com/eu/installers](https://chargepoint.com/eu/installers)

If the charging station is not installed by a ChargePoint certified installer, using a ChargePoint approved method, it is not covered under warranty and ChargePoint is not responsible for any malfunctions.

---



**CAUTION:** Use low torque settings when working with power tools during installation or servicing. Over-torquing can damage the equipment.

---



**WARNING:** Do not install or service the charging station in inclement weather. If you work in rain or wind, you must use a weather-proof shelter that covers all boxes and components.

---

**Note:** For assistance, go to [chargepoint.com/support](https://chargepoint.com/support) and find your region's technical support number.

---

## Check Site Readiness

Before beginning work, check that the site meets the basic requirements described in the station Site Design Guide.

Access ChargePoint documents at [chargepoint.com/eu/guides](https://chargepoint.com/eu/guides).

Document	Content	Primary Audiences
Datasheet	Full station specifications	Site designer, installer, and station owner
Site Design Guide	Civil, mechanical, and electrical guidelines to scope and construct the site	Site designer or engineer of record
Concrete Mounting Template Guide	Instructions to embed the charging station template in a concrete pad with anchor bolts and conduit placement	Site construction contractor
Installation Guide	Anchoring, wiring, and powering on	Installer
Operation and Maintenance Guide	Operation and preventive maintenance	Station owner, facility manager, and technician
Service Guide	Component replacement procedures	Service technician
Declaration of Conformity	Statement of conformity with directives	Purchasers and public



# Remove CP4000 2

Removing the CP4000 charging station and installing the adapter requires one ChargePoint Certified Installer and about 2 to 2.5 hours to complete (not including epoxy cure time) before continuing on to the normal charging station installation described in the *CP6000 Installation Guide*.

**Note:** This upgrade assumes that the CP4000 was originally installed according to ChargePoint specifications as listed in its datasheet and technical guides. Surface entry wiring or incorrect conduit configuration disqualifies a charging station from upgrade.

**Note:** For assistance, go to [chargepoint.com/support](https://chargepoint.com/support) and find your region's technical support number.

## Required Tools and Equipment

To replace a CP4000 charging station with a CP6000 station, you need the following items:

- ChargePoint card or smartphone with ChargePoint app installed
- ChargePoint installer login credentials
- ChargePoint triangular key (obtain from station owner)
- T27 Tamper proof Torx driver
- T30 Tamper proof Torx driver
- Phillips screwdriver
- 5 mm hex driver
- 22 mm hex wrench
- Bent-nose pliers (only stations with Cable Management Kits)

---

## Disconnect CP4000

1. Optional: Only stations with Cable Management Kits (CMK). Use your ChargePoint card or the mobile app to start a charging session. Unlock the charging cables and set them gently down on the ground.
2. Power off the charging station at the breaker panel before continuing work. Use a multimeter to test that power is off.

---

### **DANGER:** RISK OF SHOCK



- Before any procedure, the technician must disconnect the power.
- Follow local code to de-energize the applicable circuit and lock out/tag out the disconnect before proceeding. Use a multimeter to test that power is off.
- Keep power off until top cap is correctly reinstalled and the work is complete.

FAILURE TO FOLLOW THESE INSTRUCTIONS CAN RESULT IN SERIOUS INJURY, LOSS OF LIFE, OR PROPERTY DAMAGE.

---

3. Optional: Stations with CMKs. Disconnect the charging cables from CMK. Using bent-nose pliers, carefully turn the knot bearing counter clockwise approximately 1/4 turn. You may need to push down on the knot bearing to turn it.



4. Get the station's triangular key from the station owner to unlock the front panel.



5. Swing the panel open and down.



- 
6. Locate the strain relief connectors and loosen them from the cable glands next to the station mounting bracket.



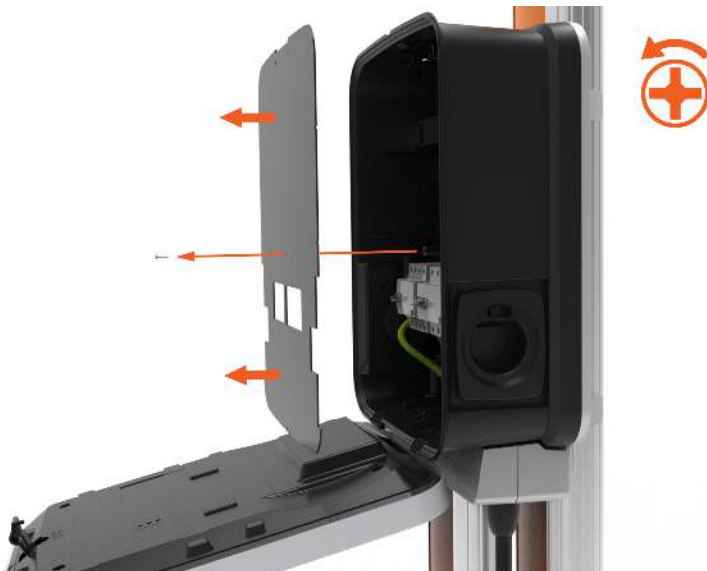
7. Using a T27 Torx driver, remove two M6 screws.



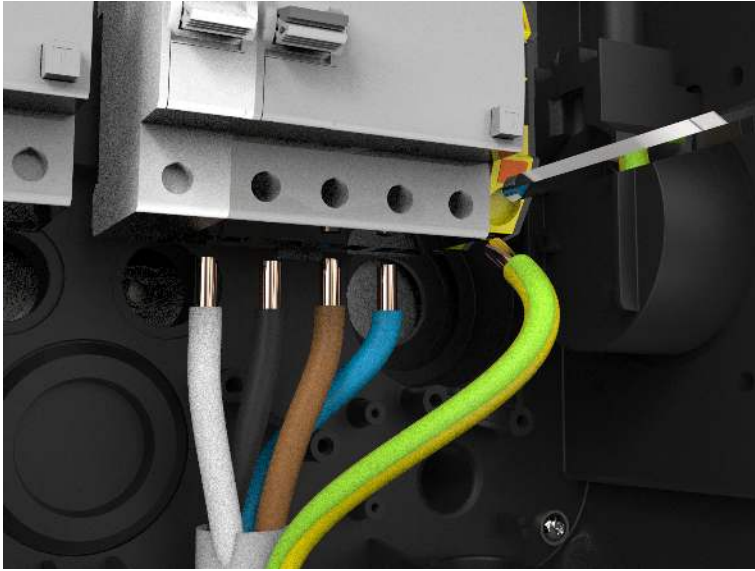
8. Remove the trim wall.



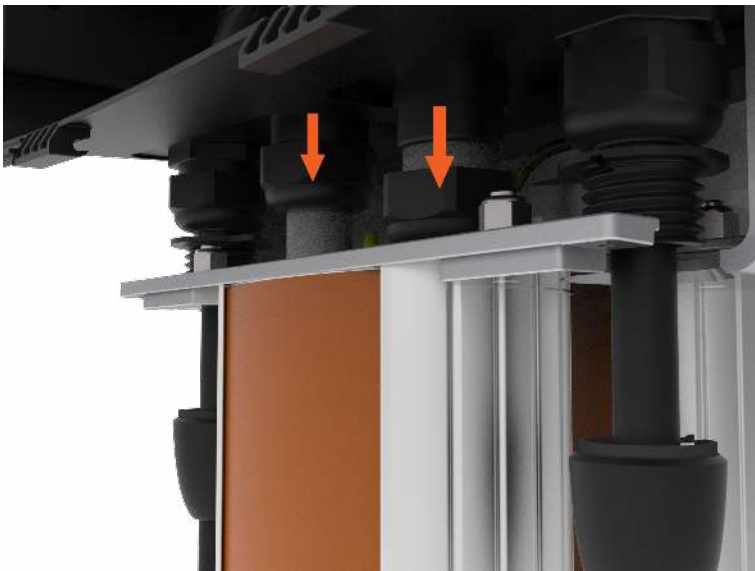
9. Remove the component cover screw and the cover.



- 
10. Using a Phillips screwdriver, loosen the screws holding the wires in the terminal block. Disconnect the wires from the terminal block.



11. Loosen the service wire glands.



## Remove CP4000

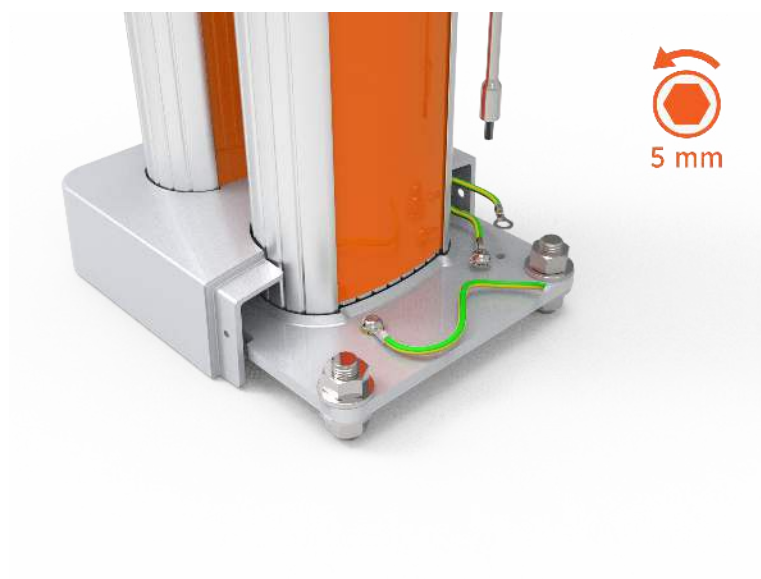
1. Use a T30 tamper-proof Torx driver to remove the two 16 mm M6 screws securing the bolt covers.



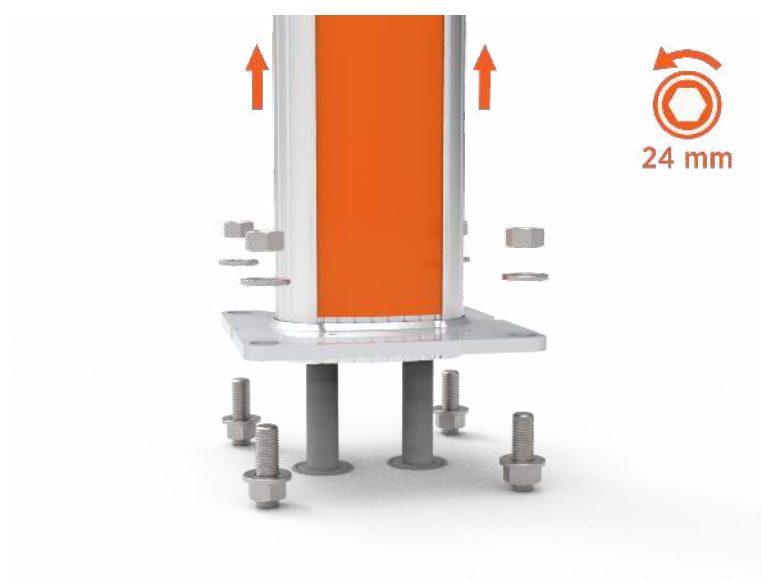
2. Remove the covers.



3. Using a screwdriver with a 5 mm hex driver, remove the screw securing the grounding cables to the pedestal base plate.



4. Using a 24 mm hex wrench, remove the washers and nuts and gently lift the CMK (optional) and set it aside.



5. Refer to the CP4000 Installation Guide and reverse the installation steps to disassemble the CP4000 charging station.



**IMPORTANT:** Access ChargePoint documents at [chargepoint.com/eu/guides](https://chargepoint.com/eu/guides).

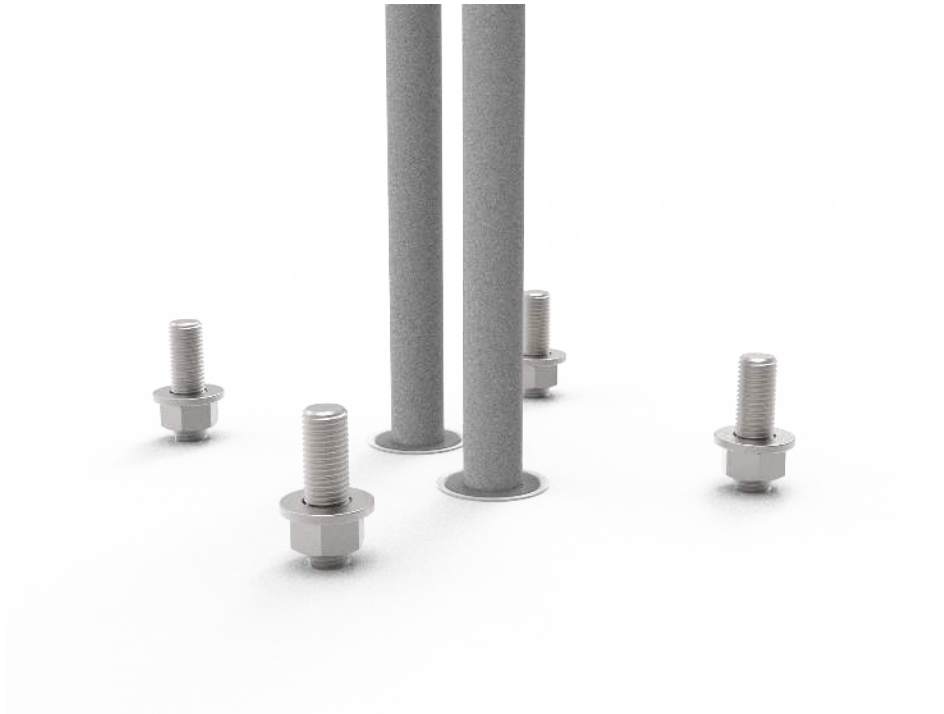
Follow the installation steps in reverse sequence to remove the CP4000 charging station.

6. Go to [Install CP6000 Adapter Plate](#).

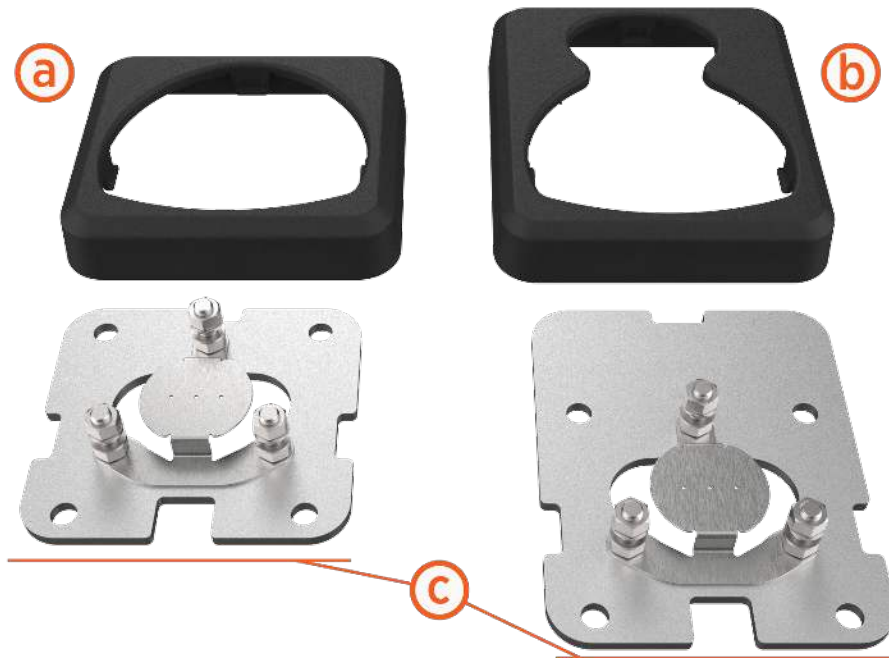


# Install CP6000 Adapter Plate **3**

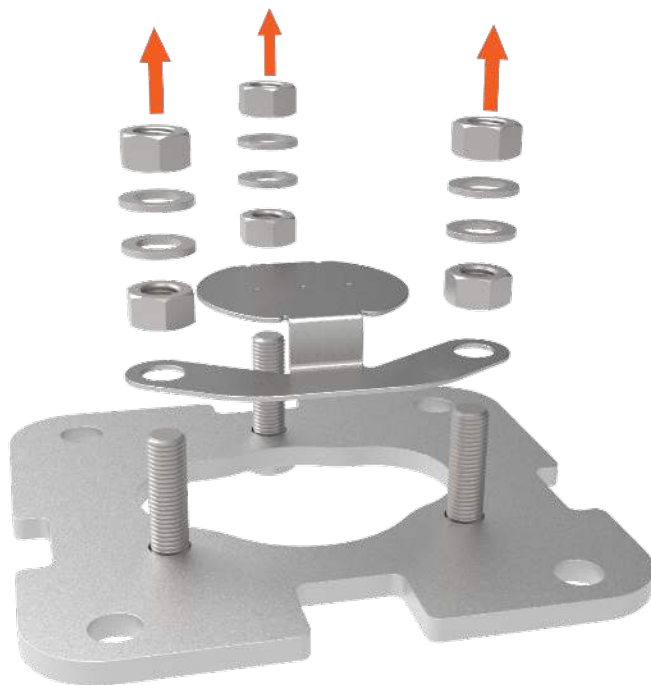
1. Ensure there is a nut and washer on each of the four existing anchor bolts.



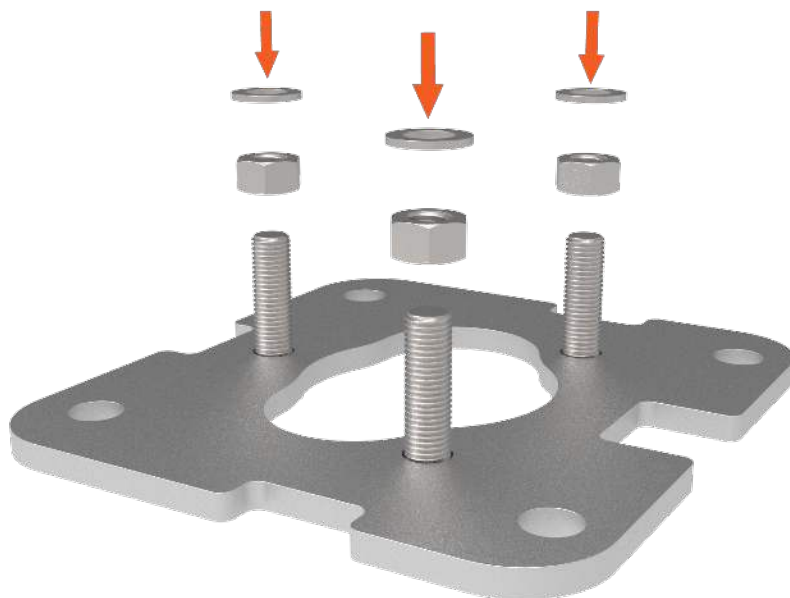
- 
2. Choose the appropriate adapter plate. Note where the front of the station will face.
- a. Stations without cables (CMK)
  - b. Stations with cables (CMK)
  - c. Front of the station



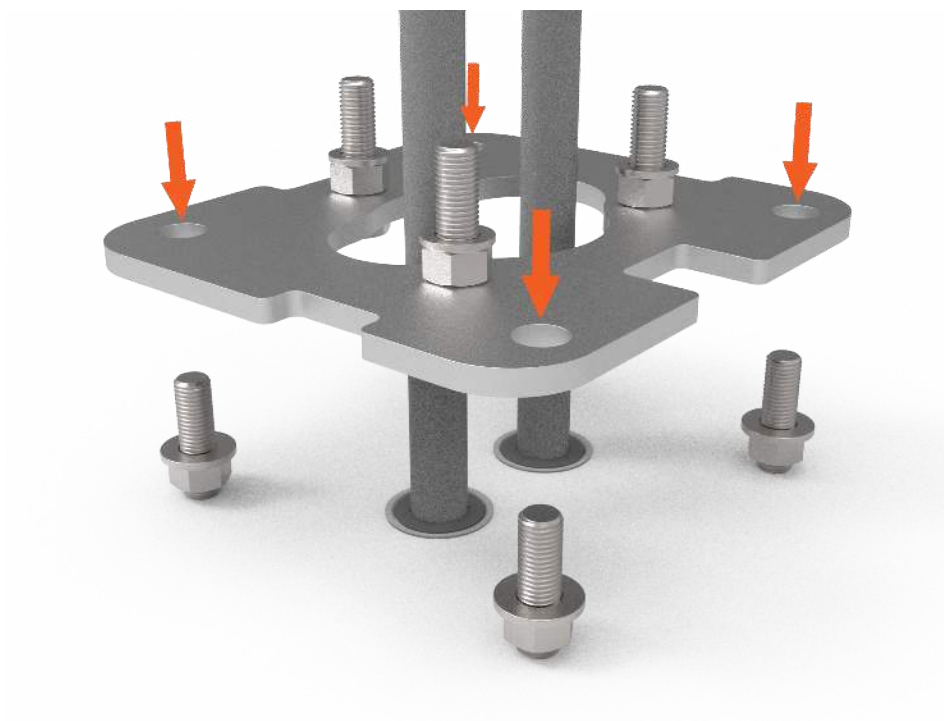
- 
3. Remove the nuts, washers, and cable gland bracket from the top of the adapter plate.



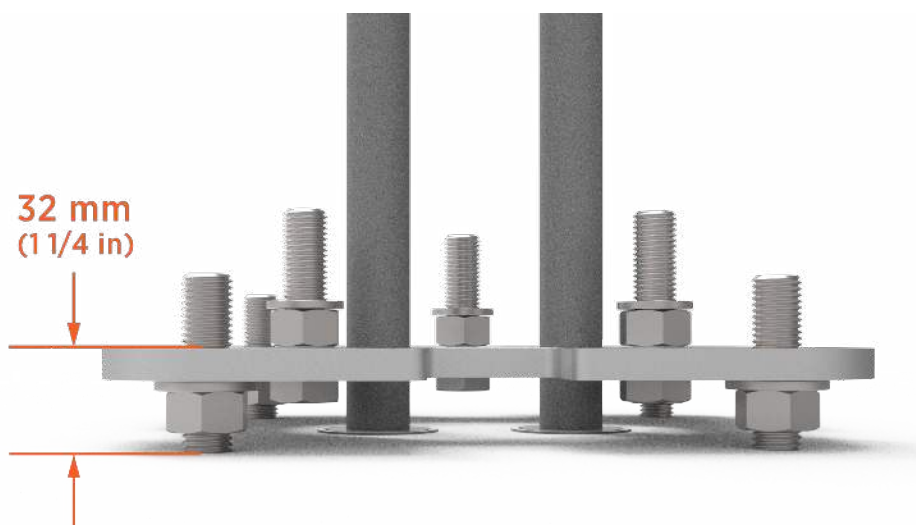
4. Place a nut and washer on each of the adapter plate bolts.



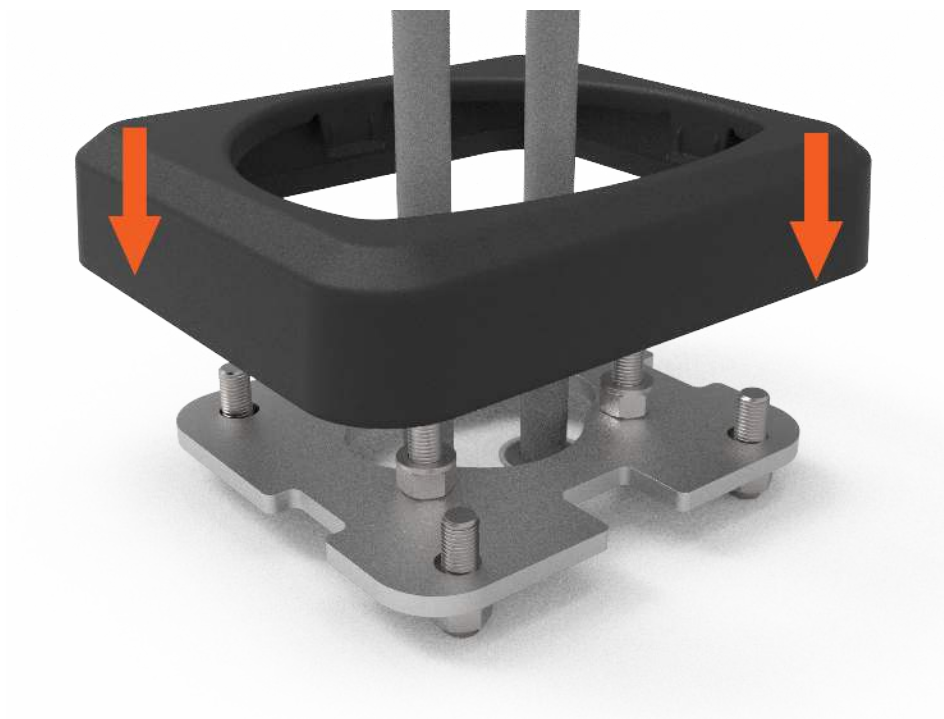
- 
5. Place the adapter plate on the concrete over the conduit stub-up or duct.



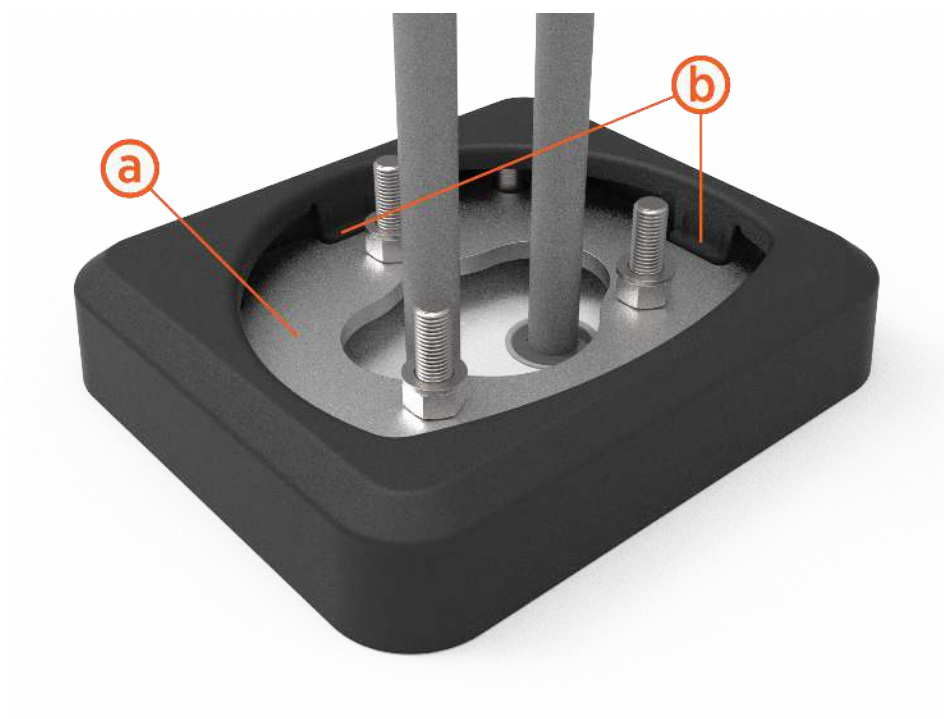
6. The top of the adapter plate needs to be approximately 32 mm (1 1/4 in) above the concrete.



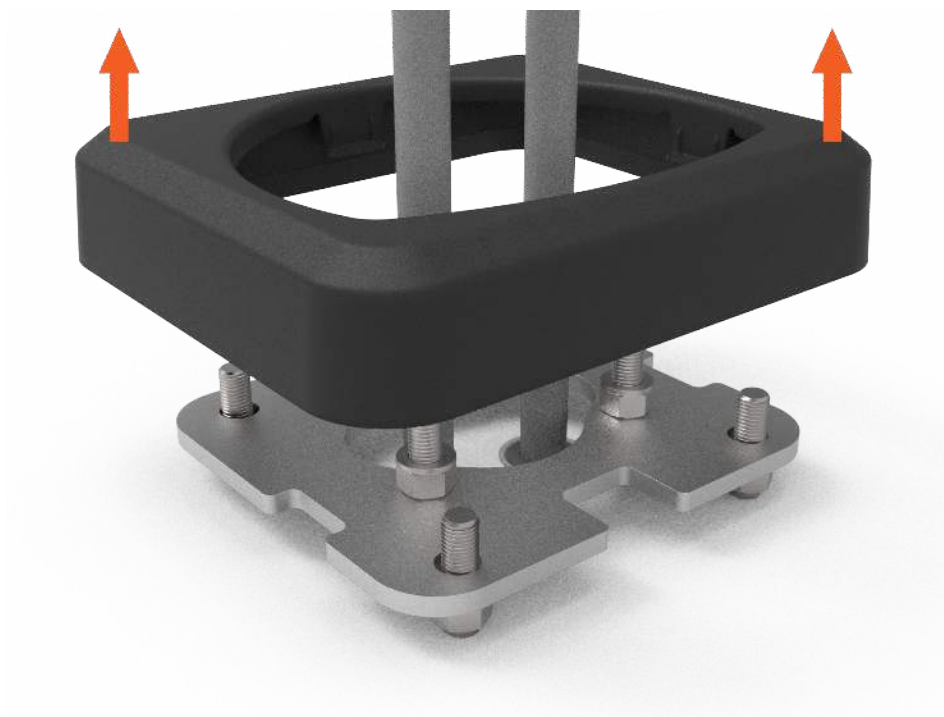
- 
7. Place the plastic cover on top of the adapter plate.



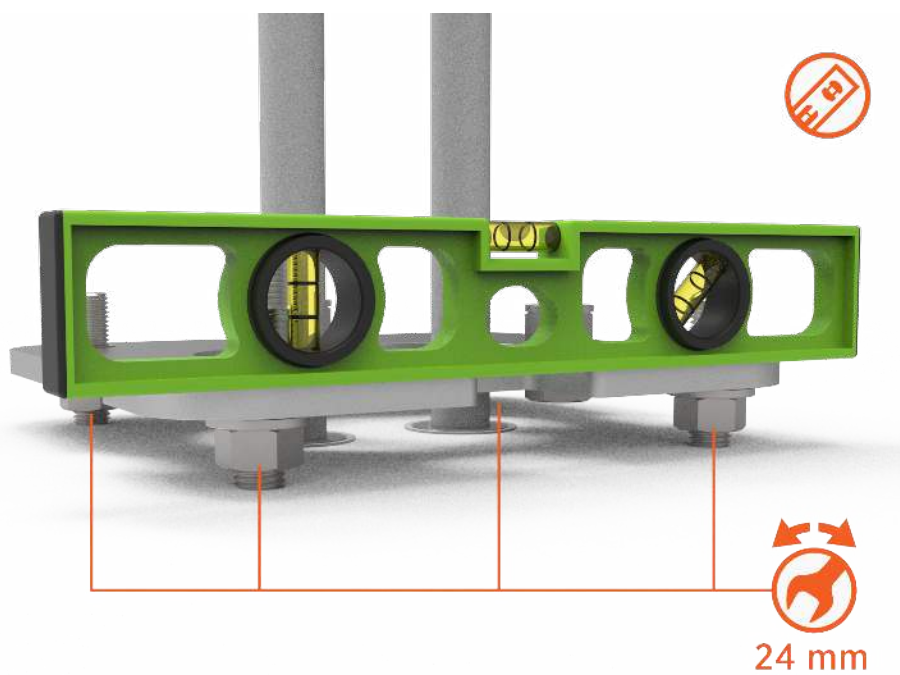
8. Confirm that the top of the adapter plate (a) is the same height as the tabs (b) on the plastic cover.



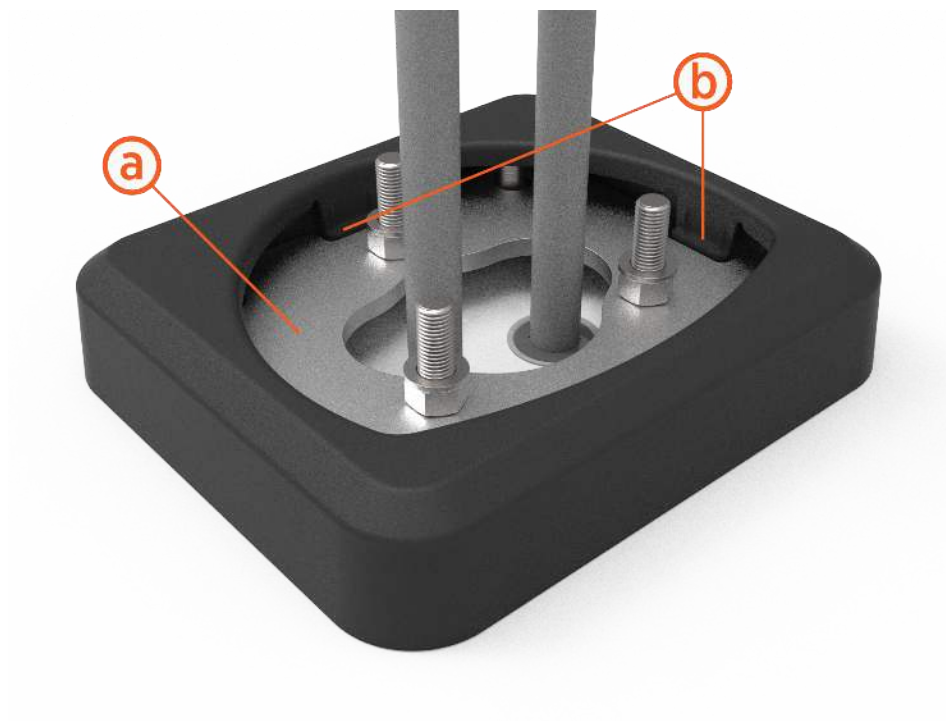
9. Remove the plastic cover.



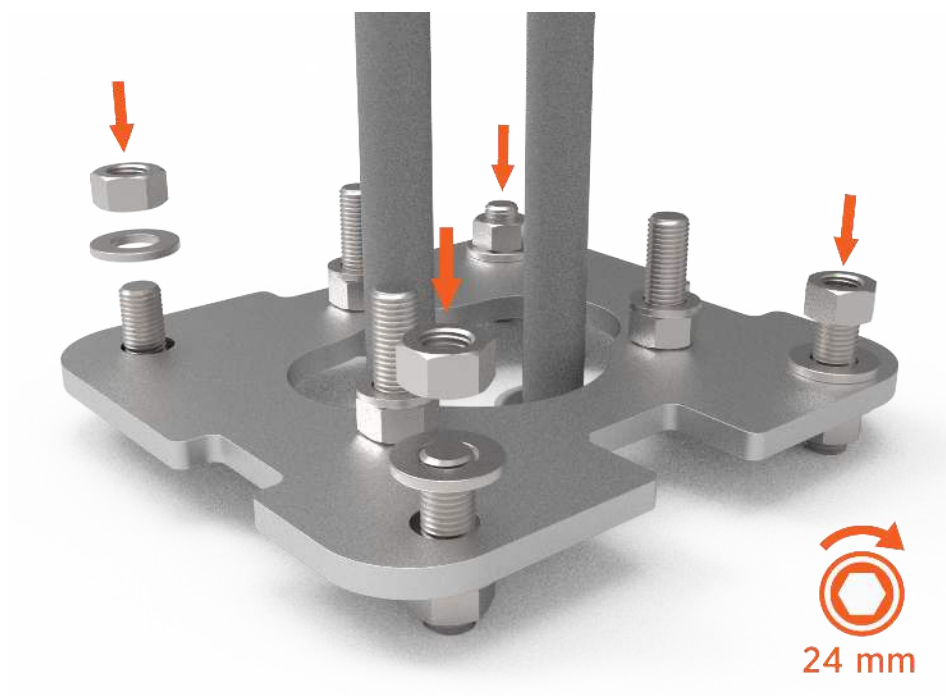
10. Adjust the lower nuts as necessary to level the adapter plate.



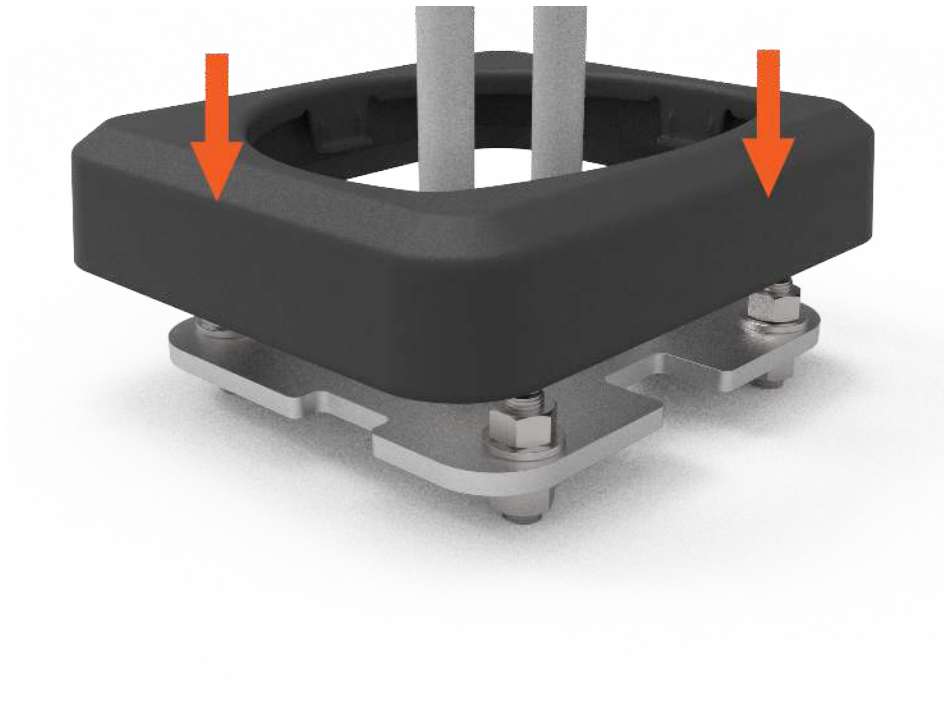
- 
11. Ensure the top of the adapter plate (a) is still the same height as the tabs on the plastic cover (b).



12. Place a washer and nut on each of the four anchor bolts.  
Using a 24 mm hex wrench, torque the M16 nuts to 120 Nm (88 ft-lbs).



- 
13. Slide the plastic cover on top of the adapter plate.



Refer to the *CP6000 Installation Guide* to install the CP6000 charging station.



## Limited Warranty Information and Disclaimer

The Limited Warranty you received with your charging station is subject to certain exceptions and exclusions. For example, your use of, installation of, or modification to, the ChargePoint® charging station in a manner in which the ChargePoint® charging station is not intended to be used or modified will void the limited warranty. You should review your limited warranty and become familiar with the terms thereof. Other than any such limited warranty, the ChargePoint products are provided "AS IS," and ChargePoint, Inc. and its distributors expressly disclaim all implied warranties, including any warranty of design, merchantability, fitness for a particular purposes and non-infringement, to the maximum extent permitted by law.

### Limitation of Liability

CHARGEPOINT IS NOT LIABLE FOR ANY DIRECT, INDIRECT, INCIDENTAL, SPECIAL, PUNITIVE OR CONSEQUENTIAL DAMAGES, INCLUDING WITHOUT LIMITATION LOST PROFITS, LOST BUSINESS, LOST DATA, LOSS OF USE, OR COST OF COVER INCURRED BY YOU ARISING OUT OF OR RELATED TO YOUR PURCHASE OR USE OF, OR INABILITY TO USE, THE CHARGING STATION, UNDER ANY THEORY OF LIABILITY, WHETHER IN AN ACTION IN CONTRACT, STRICT LIABILITY, TORT (INCLUDING NEGLIGENCE) OR OTHER LEGAL OR EQUITABLE THEORY, EVEN IF CHARGEPOINT KNEW OR SHOULD HAVE KNOWN OF THE POSSIBILITY OF SUCH DAMAGES. IN ANY EVENT, THE CUMULATIVE LIABILITY OF CHARGEPOINT FOR ALL CLAIMS WHATSOEVER RELATED TO THE CHARGING STATION WILL NOT EXCEED THE PRICE YOU PAID FOR THE CHARGING STATION. THE LIMITATIONS SET FORTH HEREIN ARE INTENDED TO LIMIT THE LIABILITY OF CHARGEPOINT AND SHALL APPLY NOTWITHSTANDING ANY FAILURE OF ESSENTIAL PURPOSE OF ANY LIMITED REMEDY.



[chargepoint.com/support](https://chargepoint.com/support)

75-001545-00 r1