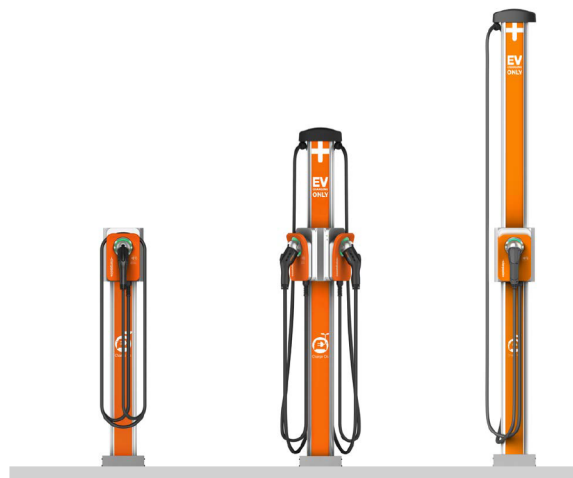


# CPF50



Networked Charging Station

Installation Guide



---

# IMPORTANT SAFETY INSTRUCTIONS

SAVE THESE INSTRUCTIONS

---

## WARNING:



1. Read and follow all warnings and instructions before servicing, installing, or operating the ChargePoint® charging station. Install and operate only as instructed. Failure to do so may lead to death, injury, or property damage, and will void the Limited Warranty.
  2. Only use licensed professionals certified by ChargePoint for installation and service, adhere to all national and local building codes and standards, and ensure compliance with local building and electrical codes and standards, climate conditions, safety standards, and all applicable codes and ordinances. Inspect the charging station for proper installation before use.
  3. Always ground the ChargePoint charging station. Failure to ground the charging station can lead to risk of electrocution or fire. The charging station must be connected to a grounded, metal, permanent wiring system, or an equipment grounding conductor shall be run with circuit conductors and connected to the equipment grounding terminal or lead on the Electric Vehicle Supply Equipment (EVSE). Connections to the EVSE shall comply with all applicable codes and ordinances.
  4. Install the ChargePoint charging station on a concrete pad using a ChargePoint-approved method. Failure to install on a surface that can support the full weight of the charging station can result in death, personal injury, or property damage. Inspect the charging station for proper installation before use.
  5. This charging station is not suitable for use in Class 1 hazardous locations, such as near flammable, explosive, or combustible vapors or gases (This charging station is not suitable for use in any ATEX classified area, such as near flammable, explosive, or combustible vapors or gases).
  6. Supervise children near this device.
  7. Do not put fingers into the electric vehicle connector.
  8. Do not use this product if any cable is frayed, has broken insulation, or shows any other signs of damage.
  9. Do not use this product if the enclosure or the electric vehicle connector is broken, cracked, open, or shows any other signs of damage.
  10. Use only copper conductor wire rated for 90 °C (194 °F).
- 



**IMPORTANT:** Under no circumstances will compliance with the information in a ChargePoint guide such as this one relieve the user of the responsibility to comply with all applicable codes and safety standards. This document describes approved procedures. If it is not possible to perform the procedures as indicated, contact ChargePoint. ChargePoint is not responsible for any damages that may result from custom installations or procedures not described in this document or that fail to adhere to ChargePoint recommendations.

---

---

## Product Disposal

Applicable to NA - Do not dispose of as part of unsorted domestic waste. Inquire with local authorities regarding proper disposal. Product materials are recyclable as marked.



## Document Accuracy

The specifications and other information in this document were verified to be accurate and complete at the time of its publication. However, due to ongoing product improvement, this information is subject to change at any time without prior notice. For the latest information, see our documentation online at [chargepoint.com/guides](https://chargepoint.com/guides).



## Copyright and Trademarks

©2013-2025 ChargePoint, Inc. All rights reserved. This material is protected by the copyright laws of the United States and other countries. It may not be modified, reproduced, or distributed without the prior, express written consent of ChargePoint, Inc. ChargePoint and the ChargePoint logo are trademarks of ChargePoint, Inc., registered in the United States and other countries, and cannot be used without the prior written consent of ChargePoint.

## Symbols

This guide and product use the following symbols:



**DANGER:** Risk of electric shock



**WARNING:** Risk of personal harm or death



**CAUTION:** Risk of equipment or property damage



**IMPORTANT:** Crucial step for installation success



Read the manual for instructions



Ground/protective earth

## Illustrations Used in This Document

The illustrations used in this document are for demonstration purposes only and may not be an exact representation of the product. However, unless otherwise specified, the underlying instructions are accurate for the product.

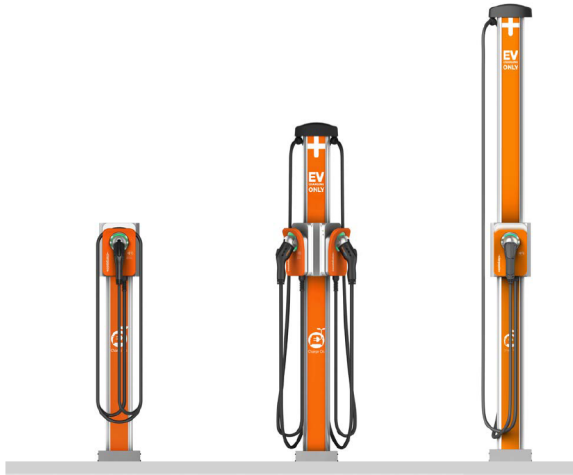
# Contents

Important Safety Instructions .....	ii
<b>1 Introduction .....</b>	<b>1</b>
Site Requirements .....	1
ChargePoint Gateway Requirements .....	2
Power Management .....	2
Tools Required .....	2
Overview of the Installation Process .....	3
Check for the Correct Shipping Boxes .....	3
Check the Contents of Each Box .....	6
Choose Your Configuration .....	12
<b>2 Install a Wall Mount CPF50 (Without a CMK) .....</b>	<b>14</b>
<b>3 Install a Wall Mount CPF50 Bracket and CMK .....</b>	<b>18</b>
Mount the Back Bracket .....	18
Prepare the CMK .....	20
Mount the CMK .....	21
Install the Lower Sign .....	23
<b>4 Install the Pedestal .....</b>	<b>24</b>
Mount and Level the Pedestal .....	24
Install Pedestal Covers .....	25
Choose Your Configuration .....	27
<b>5 Mount a Single Station Bracket (Without a CMK) .....</b>	<b>28</b>
<b>6 Mount a Single Station Bracket and CMK .....</b>	<b>30</b>
Prepare the CMK .....	30
Mount the Bracket and CMK .....	31
<b>7 Mount a Dual Station Bracket (Without a CMK) .....</b>	<b>34</b>



<b>8 Mount a Dual Station Bracket and CMK .....</b>	<b>39</b>
Prepare the CMK .....	39
Mount the Bracket and CMK .....	40
<b>9 Install the Station and Charging Cable .....</b>	<b>45</b>
Mount the Station .....	45
Review the Wiring Diagram .....	47
Connect the Service Wiring .....	49
Connect the Charging Cable .....	50
Attach the Wire Cover and Faceplate .....	52
Prepare the Charging Cable for Use .....	54
<b>10 Complete Station Setup .....</b>	<b>56</b>
Power Up .....	56
Pinpoint the Station .....	57
Start a Charging Session .....	57
Complete the Checklist .....	58

# Introduction 1



The ChargePoint CPF50 is a durable and powerful station that blends ease of use and reliability. With a maximum charging output of 12 kW (208/240 VAC @ 50 A) and industry-leading, ENERGY STAR® certified efficiency, it helps get vehicles back on the road quickly while reducing energy costs. The CPF50 can be mounted on a pedestal or a wall.

---

**IMPORTANT:** You must be a licensed electrician and complete online training to become a ChargePoint certified technician. If you do not complete training, you cannot access the ChargePoint network to complete installation.



Find online training at: [chargepoint.com/installers](https://chargepoint.com/installers)

If the charging station is not installed by a ChargePoint certified technician, using a ChargePoint approved method, it is not covered under warranty and ChargePoint is not responsible for any malfunctions.

---

Follow the installation instructions and heed all warnings.

## Site Requirements

Ensure that the appropriate wiring, circuit protection, and metering is completed at the installation site by reviewing the Site Design Guide, Datasheet, wiring diagrams and grounding requirements in [Install the Station and Charging Cable](#).

---

# ChargePoint Gateway Requirements

The CPF50 charging station has its own cellular connection. Earlier models of CPF50 require that the ChargePoint Gateway is installed for cellular connectivity. To determine whether the CPF50 model has its own cellular connectivity, look for the label at the bottom of the station, which indicates the model name. A model name with CPF50-K will have a cellular modem, while a model name with CPF50 will require the ChargePoint Gateway for cellular connection. If the ChargePoint Gateway is required, each CPF50 must be installed within 45 m (150 ft) of the Gateway within line of sight.

## Power Management

Using ChargePoint Power Management technology, sites can install more stations than otherwise would be supported by the available electrical service. A maximum aggregate load is defined for a group of charging stations, and ChargePoint cloud-based services manage the individual power output of each station (or port) to ensure the maximum load is never exceeded.

As shipped, a CPF50 charging station provides up to 50 A of output current to each charging station.

Additional information regarding Power Management for your charging stations is available at [chargepoint.com/guides](https://chargepoint.com/guides).

## Tools Required

- Bubble level
- #2 Phillips screwdriver
- #3 Phillips screwdriver
- Wire stripper
- Voltage tester
- T10 Security Torx driver
- Gloves

## For Wall Mount Installations

- Drill
- Drill bit suitable for the type of wall material
- 21 mm (3/4 inch trade size) conduit and fittings
- 3/8 inch hex driver
- On a wood stud only: Stud finder
- On a wood stud only: Nut setter
- On masonry or concrete: 6 mm (1/4 inch) internally threaded masonry anchors and screws rated for at least 318 kg (700 lb) pull-out force

## For Pedestal Mount Installation

- Ratchet with 3/8 inch and 7/16 inch sockets
- 1/2 inch drive torque wrench, rated for at least 122 Nm (90 ft-lbs)
- 1 -1/16 inch 6-point deep socket
- Adjustable wrench




**IMPORTANT:** Ensure that the installation complies with all applicable codes and ordinances.


## Overview of the Installation Process




1. Check for the correct number of shipping boxes for your configuration.
2. Check the contents of each shipping box.
3. Proceed to the appropriate topic for your configuration:
  - Install a Wall Mount CPF50 (Without a CMK).
  - Install a Wall Mount CPF50 Bracket and CMK.
  - Install the Pedestal.
4. Proceed to Install the Station and Charging Cable to mount the station and connect the service wiring.



## Check for the Correct Shipping Boxes



The CPF50 includes nine possible configurations. Verify the number of boxes expected for your configuration. Open the Main Unit box first to access this guide.

Configuration	Box List	Completed Installation
Wall Mount	<ul style="list-style-type: none"> <li>• Main Unit</li> </ul>	
Wall Mount with CMK6	<ul style="list-style-type: none"> <li>• Main Unit</li> <li>• Mounting Kit for CMK</li> </ul>	

Configuration	Box List	Completed Installation
	<ul style="list-style-type: none"> <li>CMK6</li> </ul>	

Configuration	Box List	Completed Installation
Wall Mount with CMK8	<ul style="list-style-type: none"> <li>Main Unit</li> <li>Mounting Kit for CMK</li> <li>CMK8</li> </ul>	
Pedestal Mount Single	<ul style="list-style-type: none"> <li>Main Unit</li> <li>Pedestal</li> <li>Single Station (no CMK) Mounting Kit</li> </ul>	
Pedestal Mount Dual	<ul style="list-style-type: none"> <li>Main Unit (2)</li> <li>Pedestal</li> <li>Dual Station (no CMK) Mounting Kit</li> </ul>	
Pedestal Mount Single with CMK6	<ul style="list-style-type: none"> <li>Main Unit</li> <li>Pedestal</li> </ul>	

Configuration	Box List	Completed Installation
	<ul style="list-style-type: none"> <li>Single Station with CMK Mounting Kit</li> <li>CMK6</li> </ul>	
Pedestal Mount Dual with CMK6	<ul style="list-style-type: none"> <li>Main Unit (2)</li> <li>Pedestal</li> <li>Dual Station with CMK Mounting Kit</li> <li>CMK6</li> </ul>	

Configuration	Box List	Completed Installation
Pedestal Mount Single with CMK8	<ul style="list-style-type: none"> <li>Main Unit</li> <li>Pedestal</li> <li>Single Station with CMK Mounting Kit</li> <li>CMK8</li> </ul>	
Pedestal Mount Dual with CMK8	<ul style="list-style-type: none"> <li>Main Unit (2)</li> <li>Pedestal</li> <li>Dual Station with CMK Mounting Kit</li> <li>CMK8</li> </ul>	

---

# Check the Contents of Each Box

## Main Unit

- Installation Guide
- Rating label sheet (inside guide)
- Wall mounting template (inside guide)
- Charging station
- Faceplate
- Mounting skirt
- Wire cover
- 1/4 x 2 inch lag screws (3)
- 1/4-20 x 3/8 inch Phillips screw
- 1/4-20 x 3/4 inch hex bolts (2)
- 6-32 x 3/8 T10 Torx screws (2)

- Spare activation label

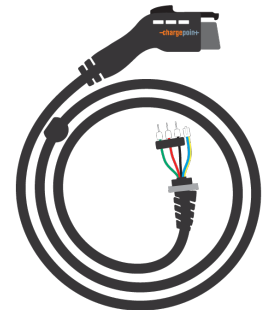
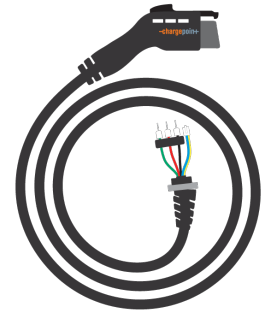
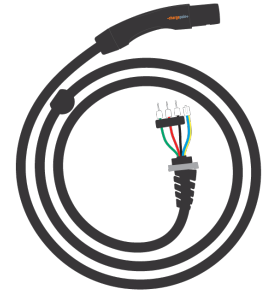
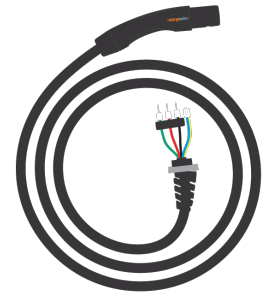
(A duplicate label is attached to the front of the charging station. Keep this spare label. It contains important information needed to activate the station on the ChargePoint network.)

- Charging cable



## About the Charging Cable

Charging cables (J1772 or NACS) come in two lengths: 5.5 m (18 ft) or 7 m (23 ft). Verify the length. If you ordered a CMK, ensure that the charging cable matches the length of the CMK. The charging cables for use with CMK have a cable clamp (a) pre-installed on the charging cable.





---

## Pedestal



The pedestal box contains:

- Main body
- Pedestal covers (3)\*
  - Front (a)
  - Back with CMK (b)
  - Back without CMK (c)
- Pedestal CMK spacer (attached to the rear of the main body)
- 8-32 x 3/8 inch screws (4)
- Charging station sign (attached to the front of the main body)

Determine which back cover you need for your installation. Discard the remaining back cover.

**Note:** To prepare the installation site for installing a pedestal mount charging station, you also need the contents of the Pedestal Mount Kit. This ships separately and should already be installed prior to unboxing and installing the CPF50 charging station to allow for concrete or epoxy cure times. For additional information about site preparation, please see the CPF50 [Site Design Guide](#).

## Cable Management Kit (CMK)



The CMK comes in two sizes: CMK6 or CMK8.

- The CMK6 works with a 5.5 m (18 ft) charging cable.
- The CMK8 works with a 7 m (23 ft) charging cable.

The CMK includes:

- Cable Management assembly with pre-installed “EV Charging Only” sign and attached knot bearings
- Cable clamps (2 extra sets)

**Note:** The cable clamps are pre-installed on the charging cable and these extra sets will not be used when installing the CPF50.

## Mounting Kit

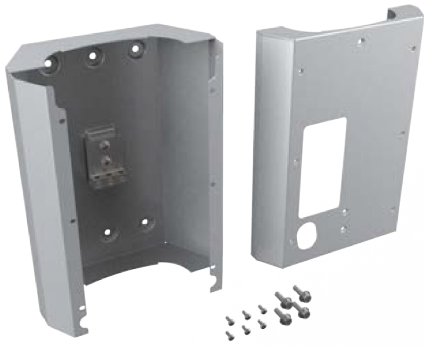
There are five possible mounting kits. Ensure that the item you received matches your product configuration. Each mounting bracket is unique to the configuration.

### Wall Mount Kit for CMK Systems

(99-002006)

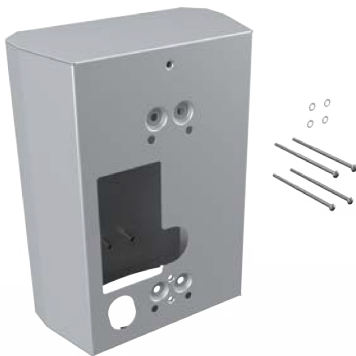
- Back bracket
- Front bracket
- 1/4-20 x 3/4 inch hex screws (4)
- 8-32 x 3/8 inch screws (6)
- Lock washers (6)

- 
- Lower CMK sig



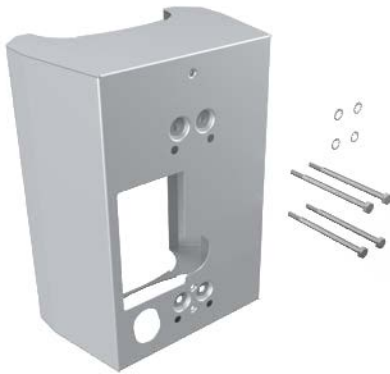
Single Station Pedestal (Without CMK) Mount Kit  
(99-002007)

- Bracket
- 10-32 x 4 inch screws (4)
- Lock washers (4)



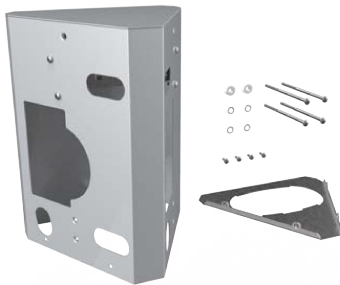
Single Station Pedestal With CMK Mount Kit  
(99-002008)

- Bracket
- 1/4-20 x 4 inch screws (4)
- Lock washers (4)



Dual Station (Without CMK) Mount Kit  
(99-002009)

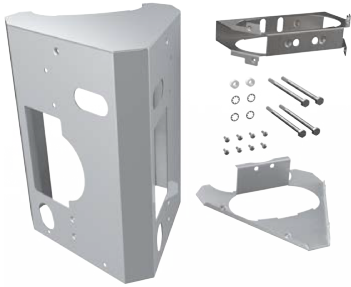
- Bracket
- Bottom bracket cover
- Internal bracket (installed inside bracket)
- 10-32 x 4 inch screws (4)
- 8-32 x 3/8 inch screws (4)
- Nylon spacers (2)
- Lock washers (4)



Dual Station With CMK Mount Kit  
(99-002010)

- Bracket
- Top internal brace
- Bottom internal brace
- 1/4-20 x 4 inch screws (4)
- 8-32 x 3/8 inch screws (8)
- Nylon spacers (2)

- 
- Lock washers (4)



## Choose Your Configuration

Once you have confirmed that you have the correct boxes and all contents for the charging station(s) you are installing, proceed to the next applicable section based on your configuration:

- Install a Wall Mount CPF50 (Without a CMK)
- Install a Wall Mount CPF50 Bracket and CMK
- Install the Pedestal



## Install a Wall Mount CPF50 2 (Without a CMK)

To install a wall mount CPF50 without a CMK, follow these steps:

1. Remove the faceplate and the wire cover from the charging station. Set them aside.



---

2. Mark the location.

- For wood stud mounting, mark the center of the stud with a line from 1000-1100 mm (39-43 inches) above the finished floor.
- For masonry or concrete, mark approximate mounting location with a vertical line from 1000-1100 mm (39-43 inches) above the finished floor.



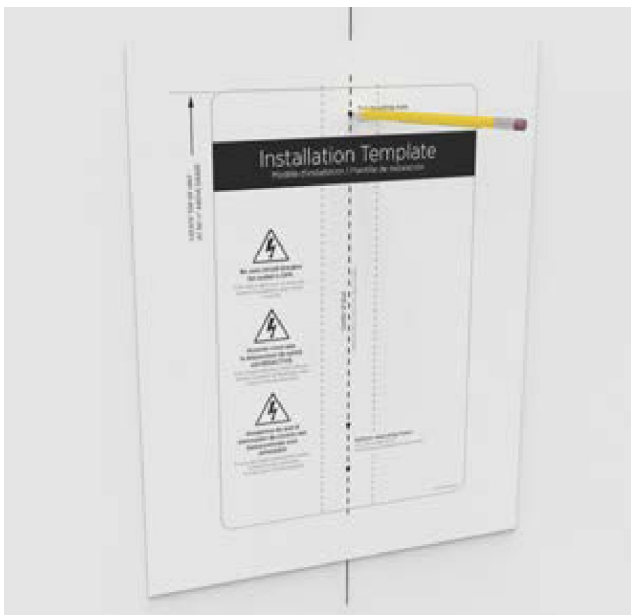
3. Hold the station against the wall, with the top of the station approximately 1270 mm (50 inches) above ground level.
4. Ensure that the charging station is level using a bubble level.



- 
5. Mark the two lower mounting holes.



6. Hold the mounting template against the wall.
7. Align the lower mounting holes on the installation template with the holes marked in the previous step.
8. Mark the top mounting hole from the installation template on the wall.



9. Remove the template from the wall.

---

10. Drill the three mounting holes using a drill bit suitable for the type of wall material.

- For wood stud mounting, drive one of the supplied 51 mm (2 inches) lag screws into the top mounting hole, leaving a gap of 3 mm (1/8 inch) between the screw head and the wall.
- For masonry or concrete mounting, drill the three mounting holes by following the instructions provided with the wall anchors. Set the three anchors. Insert a screw into the top mounting anchor, leaving a gap of 3 mm (1/8 inch) protruding between the screw head and the wall.



11. Hang the charging station on the protruding screw using the notch behind.



12. Secure the station by inserting the remaining fasteners into the mounting holes located in the stations terminal block area.

- For wood mounting, use the two 51 mm (2 inches) lag screws provided.
- For masonry or concrete mounting, use the two remaining masonry screws in the anchors.

Proceed to [Install the Station and Charging Cable](#) to review the wiring diagram.

# Install a Wall Mount CPF50 Bracket and CMK 3

To install a wall mount CPF50 bracket and CMK, follow these steps:

## Mount the Back Bracket

1. Place the back bracket against the wall with the top of the bracket 1270 mm (50 inches) above the floor level.
2. Place a bubble level on top of the bracket and ensure that the holes are accurately aligned.



---

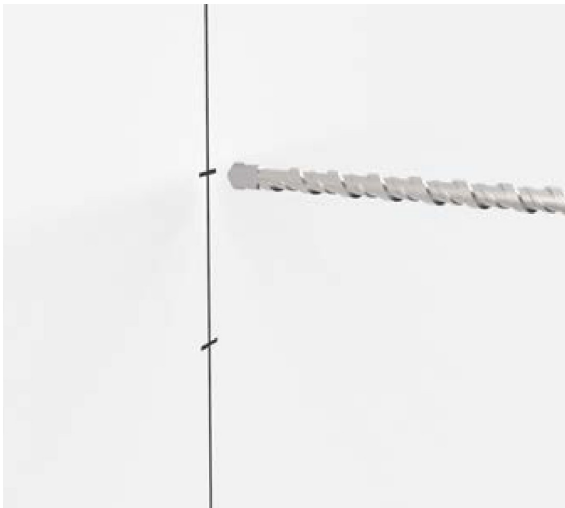
3. Mark the drill holes:

- Use the two center holes if the station is being mounted to a wooden stud (a).
- Use the four outer holes if mounting to a masonry or concrete wall (b).



4. Drill the mounting holes with appropriate drill bit for the type of wall.

**Note:** For masonry or concrete walls, insert masonry anchors (not included) rated for at least 318 kg (700 lbs) of pull-out force.



5. Secure the back bracket to the wall:

- For wooden stud, use two of the 1/4 x 2 inch lag screws provided.
- For masonry or concrete walls, use four screws appropriate for your anchors.

- 
6. Run service wiring through 19 mm (3/4 inch trade size) conduit.

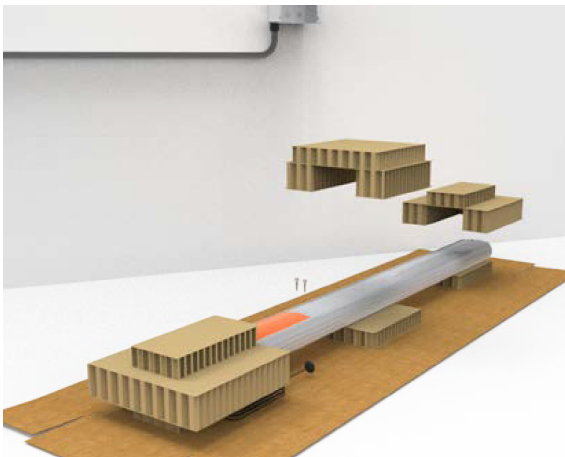


7. Insert the conduit in the hole at the bottom of the back bracket. Run approximately 300 mm (12 inches) of service wiring into the bracket.
8. Use a Phillips screwdriver and connect the ground wire to the grounding lug on the back bracket.

## Prepare the CMK

1. Place the CMK horizontally, remove and discard the two shipping screws (a) from the front of the CMK.

**Note:** Do not unwrap the ropes.



2. Position the CMK packaging in a way that the bottom is located near where the charging station will be installed.



**WARNING:** When you remove the shipping screws, the counterweights are free to move in either direction. To prevent damage or injury, always carry the assembly with the top end higher than the bottom end.

---

3. Remove the cardboard packaging.

## Mount the CMK

1. Slowly lift the CMK into position against the back bracket and hold it in place.

**Note:** The ropes will rise as the weights inside the CMK lower. Guide the ropes to the top as you gently lift the CMK.

2. Position the front bracket so that the wiring opening is in the lower left corner.



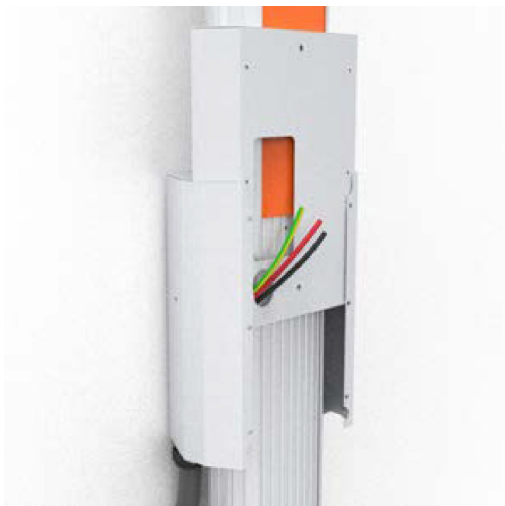
3. Slide the front bracket down over the CMK gently (ensure that you do not scratch the CMK sign) until it aligns with the back bracket.



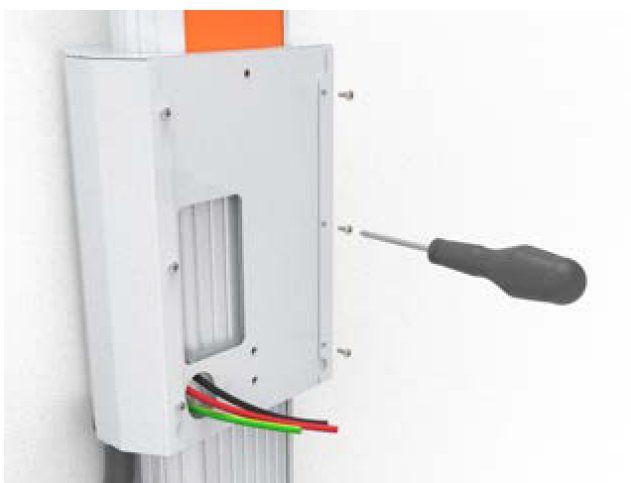
**CAUTION:** When sliding the front bracket down, pull the service wiring out of the way to protect the wires from damage.

---

- 
4. Route the service wiring through the opening in the front bracket.



5. Fasten the front bracket to the back bracket using a #2 Phillips screwdriver and the six 3/8 in screws.



## Install the Lower Sign

1. Insert the bottom left corner of the sign under the groove on the bottom left corner of the CMK.



2. Slide the sign downward as far as possible so that the top of the sign is positioned under the bottom of the mounting bracket.
3. Starting with the bottom left corner and working from bottom to top, slide the left side of the sign under the leftmost groove.
4. When the left side of the sign is fully inserted, bow the bottom of the sign outward slightly to insert the bottom right corner of the sign under the groove on the bottom right corner.
5. Starting with the bottom right corner and working from the bottom to top, slide the right side of the sign under the rightmost groove.

Proceed to [Install the Station and Charging Cable](#) to mount the charging station.



# Install the Pedestal 4

To install the pedestal, follow these steps:

## Mount and Level the Pedestal

1. Ensure that the concrete has been prepared according to the Bolt Pattern Template (PN: 75-001163-01). This includes:
  - Four bolts set into concrete with two nuts and two washers for each bolt, with the bolt extending 63.5 mm (2 1/2 inches) above the surface.
  - Conduit stub-up measuring approximately 0.3 m (1 ft) above the concrete surface.
  - Approximately 1.5 m (5 ft) of service wiring extending above the concrete surface.
2. Remove the top nut and top washer from each of the four bolts in the pad.



3. Place the pedestal over the conduit and route the service wiring through the column. Ensure that the edge with the cut-out for CMK is located at the back of the station.
4. Adjust the lower nuts to ensure that the pedestal is level.

5. When level, fasten the pedestal to the bolts using the washer and nut removed from the bolt. Torque the top nuts to 122 Nm (90 ft-lbs).



**IMPORTANT:** Verify that the pedestal is level and plumb after each adjustment by positioning the level at various locations on the base plate and on the pedestal.



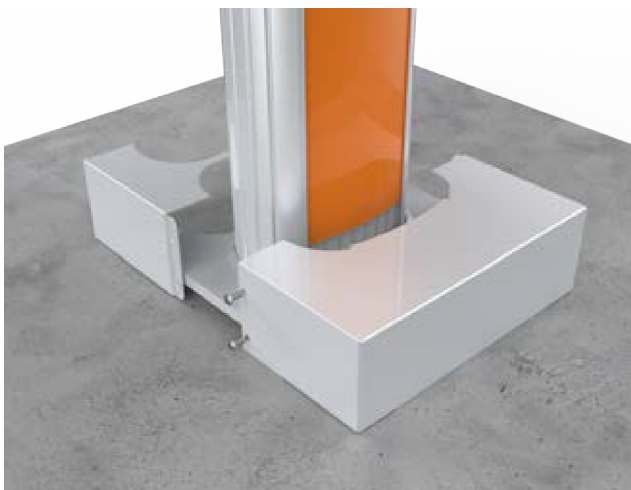
## Install Pedestal Covers

1. Select the appropriate pedestal covers from the three pieces provided:
  - If the station is not using a CMK, use the back pedestal cover without a cut-out.
  - If the station is using a CMK, use the back pedestal cover with the cutout for the CMK.



2. Position the two-piece pedestal cover over the bottom of the pedestal.

- 
3. Insert the four 3/8 inch screws, two into each side of the pedestal cover.



4. Tighten the screws using a Phillips screwdriver.
5. If the station is not using a CMK, slide the spacer (c) at the back of the pedestal upward to remove it.



6. Discard the extra pedestal cover (and the spacer, if you are installing a station without a CMK).

## Choose Your Configuration

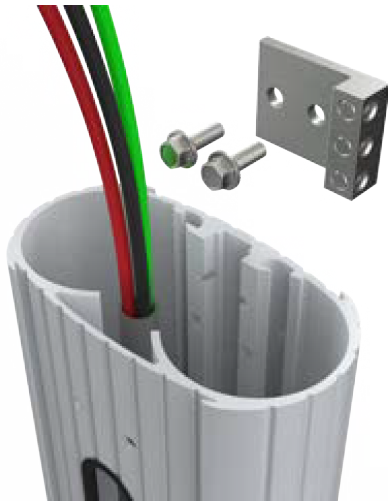
Proceed to the next section according to the configuration of the installation:

- For single station installation without CMK, proceed to Mount a Single Station Bracket (Without a CMK).
- For single station installation with CMK, proceed to Mount a Single Station Bracket and CMK.
- For dual station installation without CMK, proceed to Mount a Dual Station Bracket (Without a CMK).
- For dual station installation with CMK, proceed to Mount a Dual Station Bracket and CMK.

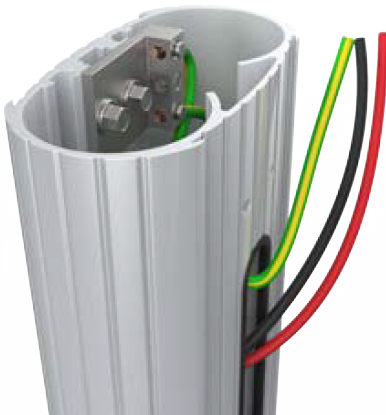
# Mount a Single Station Bracket 5 (Without a CMK)

To mount a single station bracket without a CMK, follow these steps:

1. Use a 7/16 inch wrench and remove the ground lug from the pedestal. Save the screws to reinstall later.



2. Connect the ground wire from the service wiring to the ground lug.
3. Run the ground wire from the ground lug through the wiring opening at the front of the pedestal.



4. Use the 7/16 inch wrench and reinstall the ground lug to the pedestal with the two screws you removed.

- 
5. Slide the bracket over the pedestal and simultaneously guide the remaining service wiring through the opening at the front of the pedestal.



**CAUTION:** The bracket must slide over the service wiring. Lay the wiring as flat as possible against the pedestal to prevent damage.

---

6. Insert four screws (4 inches) and four lock washers (#10) through the bracket and into the pedestal stand-offs to fasten the bracket to the pedestal.



7. Tighten the screws using a Phillips screwdriver.
8. Route the service wiring through the wiring hole at the front of the bracket.

Proceed to [Install the Station and Charging Cable](#) to mount the station.

# Mount a Single Station Bracket and CMK 6

To mount a single station bracket and CMK, follow these steps:

## Prepare the CMK

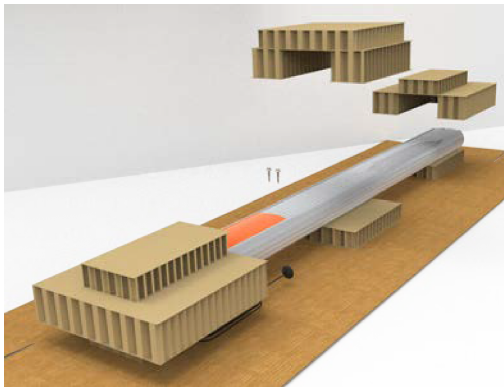
1. Position the CMK packaging in a way that the bottom is located near where the charging station will be installed.

**Note:** Do not unwrap the ropes.

2. Remove and discard the two shipping screws (a) from the front of the CMK.



**WARNING:** When you remove the shipping screws, the counterweights are free to move in either direction. To prevent damage or injury, always carry the assembly with the top end higher than the bottom end.



3. Remove the cardboard packaging.

## Mount the Bracket and CMK

1. Use a 7/16 inch wrench and remove the ground lug from the pedestal. Save the screws to re-install later.

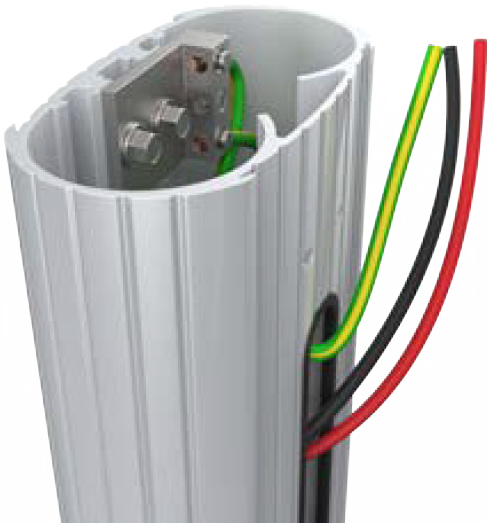


2. Connect the ground wire from the service wiring to the ground lug.





- 
3. Run the ground wire from the ground lug through the wiring opening at the front of the pedestal.



4. Use the 7/16 inch wrench and re-install the ground lug to the pedestal with the two screws you removed.
5. Slide the bracket over the pedestal while guiding the remaining service wiring through the opening at the front of the pedestal.



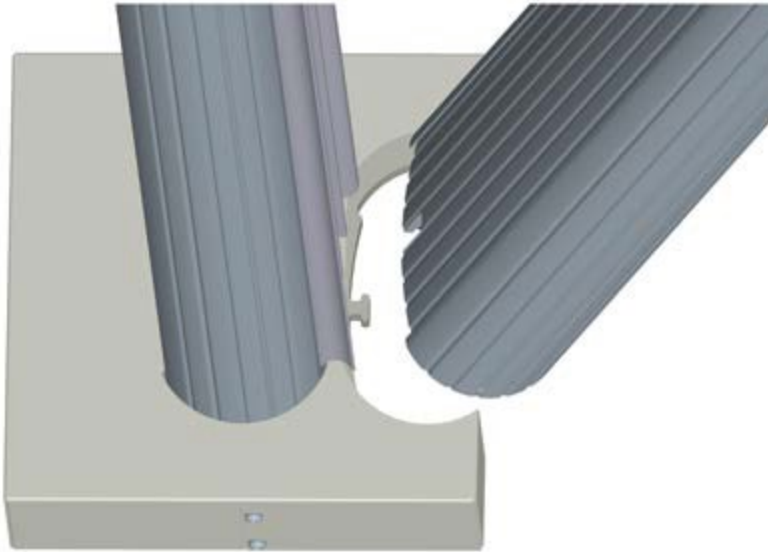
**CAUTION:** The bracket must slide over the service wiring. Lay the wiring as flat as possible against the pedestal to prevent damage.

---



6. Align the two holes at the top and the two holes at the bottom of the bracket with the corresponding holes on the pedestal.
7. Insert four screws (4 inches) and four lock washers (#10) through the bracket at the pedestal.  
**Note:** The screws are loose until they are fastened to the CMK later.
8. Route the service wiring through the wiring hole at the front of the bracket.
9. Slowly lift the CMK into position with the slot at the bottom of the CMK sliding onto the knob at the bottom of the pedestal.

**Note:** The ropes will rise as the weights inside the CMK lower. Guide the ropes to the top as you slowly lift the CMK.



10. Hold the CMK against the back of the pedestal and align the four screws coming through the bracket and pedestal with the corresponding holes in the CMK.  
**Note:** The spacer on the pedestal must slide into the ridges on the CMK.
11. Hold the bracket and CMK in place and tighten the four screws with the 7/16 inch socket.

Proceed to [Install the Station and Charging Cable](#) to mount the station.

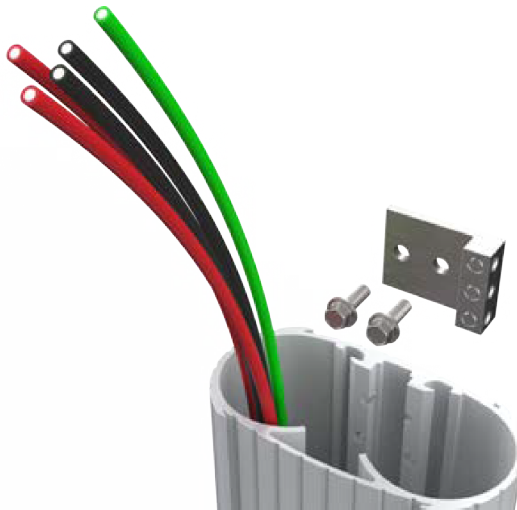
# Mount a Dual Station Bracket 7 (Without a CMK)

To mount a dual station bracket without a CMK, follow these steps:

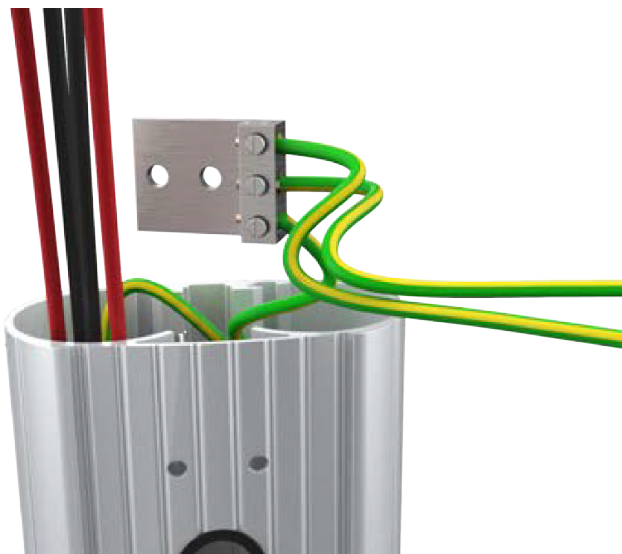
1. Slide the bottom bracket cover (a) over the pedestal and guide it gently to the bottom.



- 
2. Use a 7/16 inch wrench and remove the ground lug from the pedestal. Save the screws to reinstall later.



3. Connect the ground wire from the service wiring to the ground lug.



4. Run the ground wires from the ground lug through the wiring opening at the front of the pedestal.
5. Use the 7/16 inch wrench and re-install the ground lug to the pedestal with the two screws you removed.
6. Route the remaining service wiring through the opening at the front of the pedestal.

- 
7. Slide the bracket over the pedestal.



8. Align the two holes at the top and the two holes at the bottom of the bracket with the corresponding holes on the pedestal.

- 
9. Use two screws (4 inches) with lock washers at the top and two screws (4 inches) with nylon spacers at the bottom to fasten the main bracket to the pedestal.



10. Route the service wiring through the wiring hole on each left corner of the main bracket fronts.
11. Slide the bottom cover up.

**Note:** Ensure not to scratch the sign on the front of the pedestal.

- 
12. Use four screws (3/8 inch), two on each side and fasten the bracket to the main bracket.



Proceed to [Install the Station and Charging Cable](#) to mount the station.

# Mount a Dual Station Bracket and 8 CMK

To mount a dual station bracket and CMK, follow these steps:

## Prepare the CMK

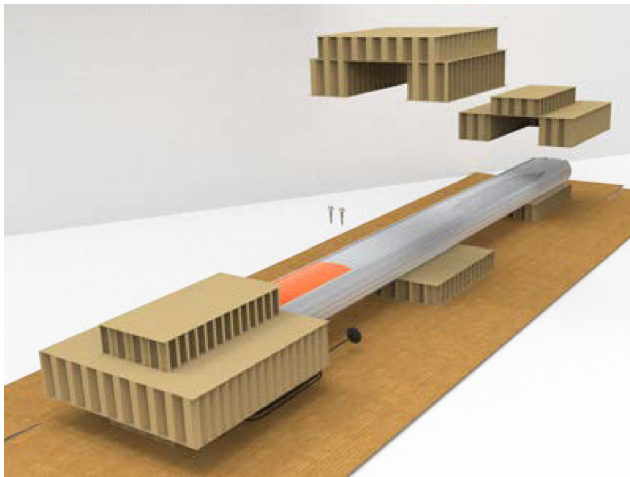
1. Position the CMK packaging in a way that the bottom is located near where the charging station will be installed.

**Note:** Do not unwrap the ropes.

2. Remove and discard the two shipping screws (a) from the front of the CMK.



**WARNING:** When you remove the shipping screws, the counterweights are free to move in either direction. To prevent damage or injury, always carry the assembly with the top end higher than the bottom end.



3. Remove the cardboard packaging.



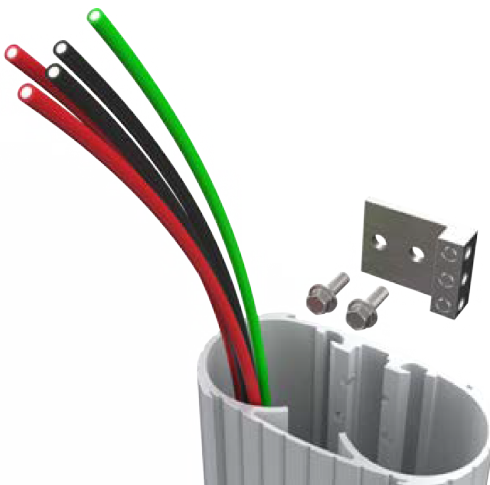
---

## Mount the Bracket and CMK

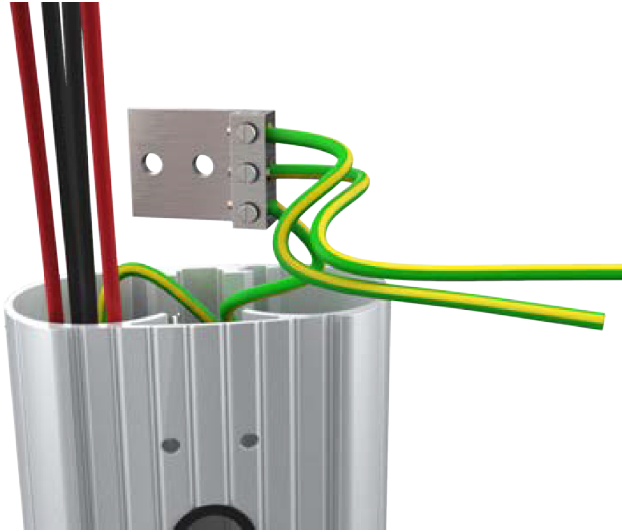
1. Slide the bottom internal brace over the pedestal and guide it gently to the bottom.



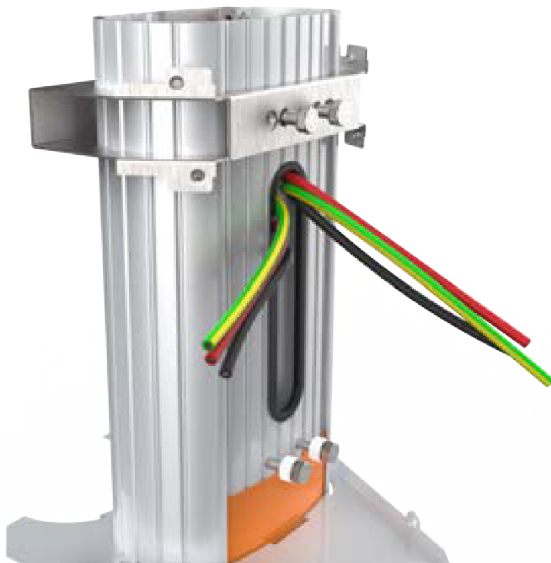
2. Use a 7/16 inch wrench and remove the ground lug from the pedestal. Save the screws to reinstall later.



3. Connect the ground wire from the service wiring to the ground lug.



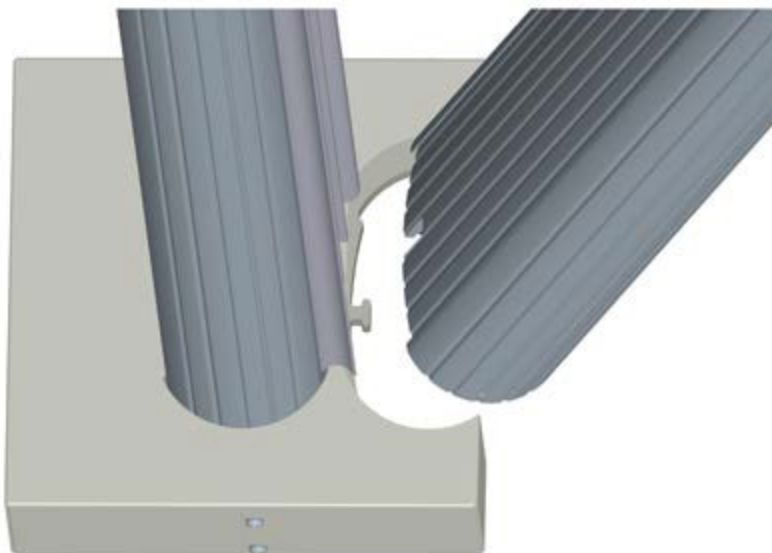
4. Run the ground wires from the ground lug through the wiring opening at the front of the pedestal.
5. Use the 7/16 inch wrench and re-install the ground lug to the pedestal with the two screws you removed.
6. Route the remaining service wiring through the opening at the front of the pedestal.
7. Install lock washers on each of the four screws (4 inches).
8. Place the top internal brace on the pedestal and align it with the two holes at the top of the pedestal.



9. Insert two of the screws into the holes on the top brace and through the pedestal.
10. Install nylon spacers on the two remaining screws (4 inches).
11. Insert the two screws (4 inches) with spacers through the two bottom holes of the pedestal.

- 
12. Slowly lift the CMK into position with the slot at the bottom of the CMK sliding onto the knob at the bottom of the pedestal.

**Note:** The ropes will rise as the weights inside the CMK lower. Guide the ropes to the top as you slowly lift the CMK.



13. Hold the CMK against the back of the pedestal and align the four screws coming through the bracket and pedestal with the corresponding holes in the CMK.

**Note:** The spacer on the pedestal must slide into the ridges on the CMK.



14. Hold the bracket and CMK in place and tighten the four screws with the 7/16 inch socket.

15. Slide the bracket over the pedestal and align the holes in the main bracket with the corresponding holes on the top internal brace.



- 
16. Insert four screws (3/8 inch) into the top brace, two on each side to fasten the main bracket to the pedestal.



17. Route the service wiring through the wiring hole on each left front corner of the bracket.
18. Slide the bottom internal brace up.
- Note:** Ensure not to scratch the sign on the front of the pedestal.
19. Use four screws (3/8 inch), two on each side and fasten the bracket to the main bracket.



Proceed to Install the Station and Charging Cable to mount the station.

# Install the Station and Charging Cable 9

Proceed to the following topics to install the charging station and charging cable.

## Mount the Station

1. Remove the faceplate and the wire cover from the charging station. Set them aside.



2. Insert a 3/8 inch screw into the top center hole on the front of the bracket using a #2 Phillips screwdriver. Leave the screw protruding approximately 6 mm (1/4 inch) to create a 3 mm (1/8 inch) gap between the back of the screw head and the bracket.
3. Position the mounting skirt against the back of the main unit.
4. Route the service wiring through the knockout in the back or the bottom of the main unit based on the configuration.
5. Hang the mounting skirt and the main unit on the top protruding screw on the bracket.

- 
6. Insert two hex screws (3/4 inch) through the holes near the bottom center and secure the main unit.

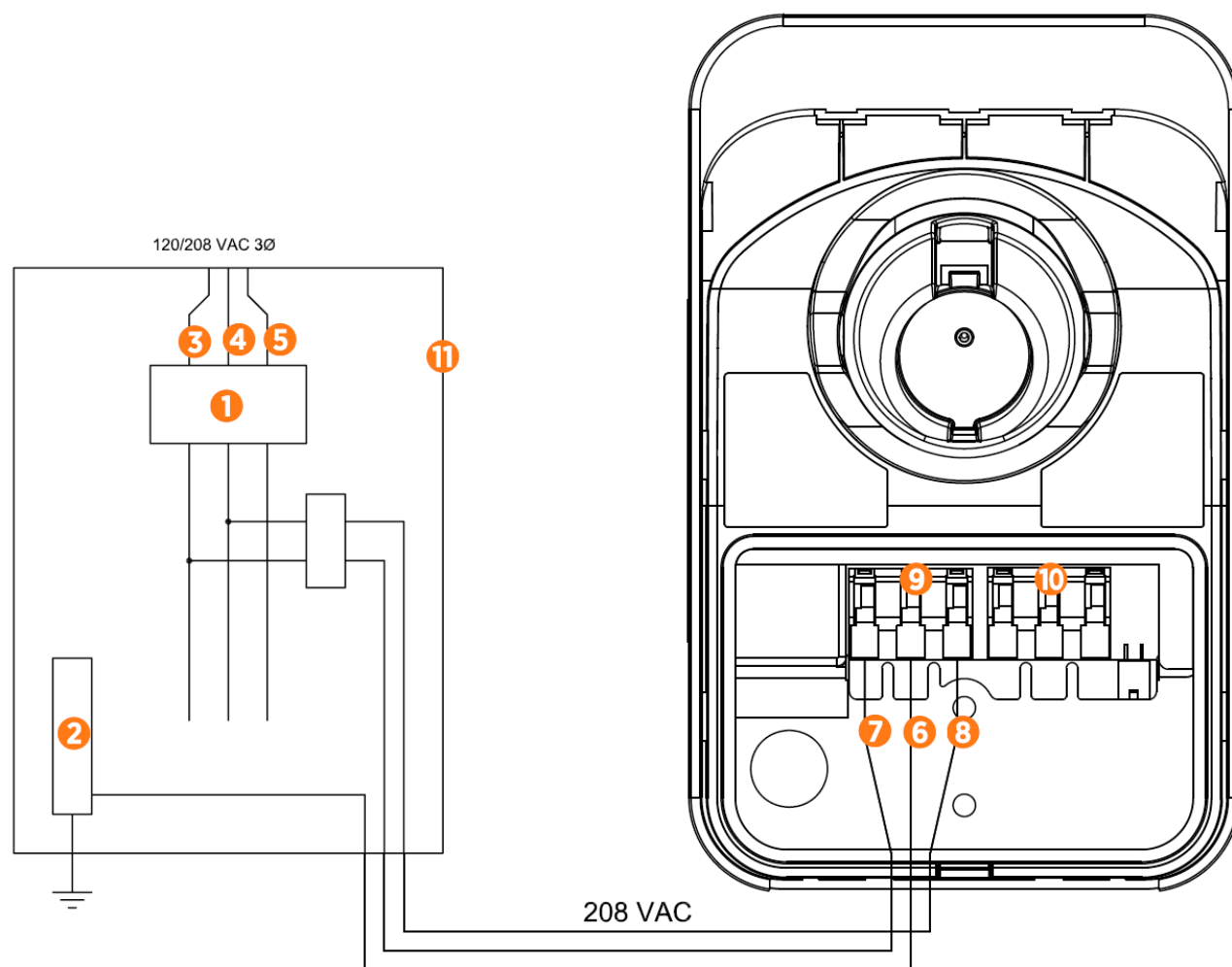


7. Tighten the hex screws using a 3/8 inch hex driver.





## 208 VAC Three Phase Panel



1. Main Breaker
2. Ground Bus
3. L1
4. L2
5. L3
6. Ground
7. L1
8. L2 / N
9. Input Terminal Block
10. Output Terminal Block
11. Local Service or Sub Panel

**Note:** Connect power to any two phases.

## Connect the Service Wiring

1. Ensure that the service wiring can easily reach the connectors on the charging station's terminal block.

**Note:** If mounting the CPF50 on an exterior wall and bringing power through the rear knockout, apply sealant around the rear knockout to prevent water ingress.



2. Trim the wiring to reduce excess length if any.
3. Strip each wire to 12 mm (1/2 inch).
4. Ensure that the white clips on the terminal block are fully open.
5. Insert the wires into the connectors on the left side of the terminal block.
6. On each connector, press down the three levers until they snap into place.

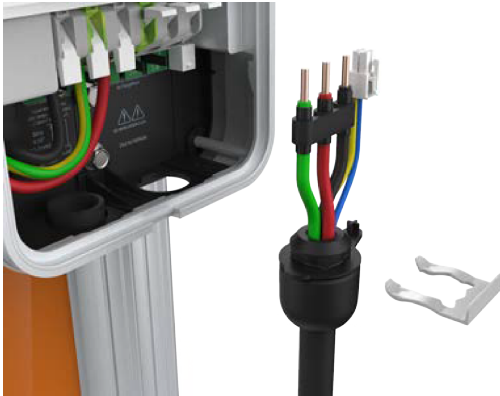


**CAUTION:** Ensure that each wire is fully inserted into the connector with no bare wire visible before pressing it into place with the white clip.

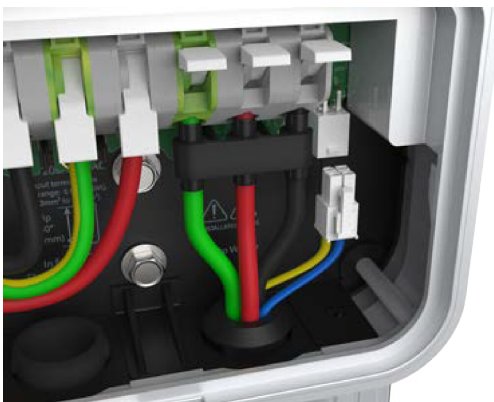
---

## Connect the Charging Cable

1. Remove the cable clip connected to the wiring end of the cable, but do not discard it. Save the clip to use later.



2. Fold the wire ends and insert them into the opening on the lower right side of the station, push up until the cable collar is flush against the enclosure.
3. Insert the green wire in the green slot on the left terminal of the output block.



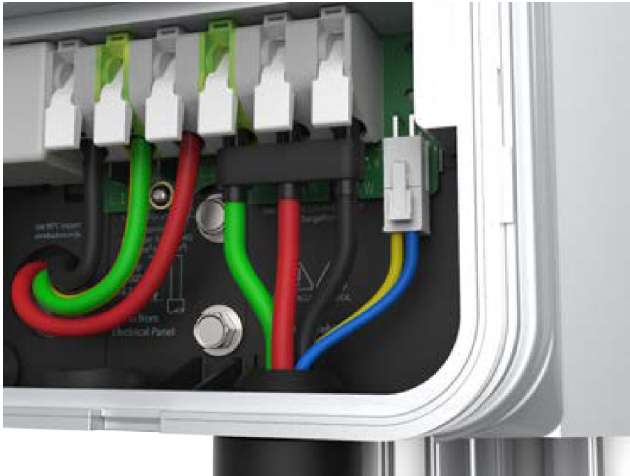
4. Insert the remaining wires into the corresponding connectors on the right side of the terminal block.
5. Push the cables up until the silver conductors are no longer visible.
6. Snap the white levers all the way down on each wire.



**CAUTION:** Ensure that each wire is fully inserted into the connector with no bare wire visible before pressing it into place with the white clip.

---

7. Insert the 4-pin plug into the connector on the right side of the output supply wiring.



8. While pushing the cable up, slide the cable clip into the slot until it snaps into place. This secures the cable and provides strain relief.



---

## Attach the Wire Cover and Faceplate

1. Place the wire cover over the exposed wiring.



2. Use a coin to lock the wire cover in place.

**Note:** Do not use a screwdriver as it may damage the wire cover.

3. Stick rating label at the bottom of the station over the default rating displayed (a). The rating label values must match the circuit feeding the charging station.



4. Remove the spare activation label taped to the front of the main unit (b) and place it on the CPF50.



Document the Radio Group page in Complete Station Setup.

5. Snap the faceplate onto the charging station.



- 
6. Use two T10 Security Torx screws and fasten the faceplate to the bottom of the station.



## Prepare the Charging Cable for Use

### For Stations Without a CMK

1. Extend the charging cable to its full length to remove any kinks or twists.

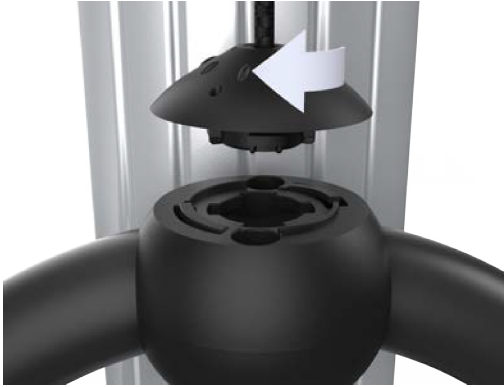


2. Drape the charging cable over the top of the charging station.
3. Insert the connector in its holster.
4. Proceed to [Complete Station Setup](#) to complete the station setup.

### For Stations With a CMK

**Note:** No tools are required to Install the knot bearing. You do not need anything from the extra cable clamp kit that comes with the CMK.

1. Extend the charging cable to its full length to remove any kinks or twists.
2. Align the knot bearing on each rope to its corresponding mating feature on the cable clamp.



3. Turn the knot bearing clockwise approximately one-quarter turn. Push down gently while turning the knot bearing.

**Note:** If you are installing a single station CPF50, attach the charging cable on the left side of the station to minimize interference with the RFID reader.

4. Proceed to [Complete Station Setup](#) to complete the station setup.



# Complete Station Setup 10



**IMPORTANT:** The CPF50 charging station has its own cellular connection. Earlier models of CPF50 require that the ChargePoint Gateway is installed for cellular connectivity. To determine whether the CPF50 model has its own cellular connectivity, look for the label at the bottom of the station, which indicates the model name. A model name with CPF50-K will have a cellular modem, while a model name with CPF50 will require the ChargePoint Gateway for cellular connection. If the ChargePoint Gateway is required, each CPF50 must be installed within 45 m (150 ft) of the Gateway within line of sight.

For earlier models, do not proceed until the ChargePointGateway is ready. The station will not function until the ChargePointGateway is properly installed in a location where it has a strong cellular signal and an unobstructed line of sight to the charging station.

To complete the setup, you must have completed the ChargePoint Installer training and received your ChargePoint Installer login. To complete the next steps, you need:

- Installer login
- CPF50 MAC address label (found on the main unit under the faceplate)
- A smartphone with a camera, QR code scanning (usually built into the camera app), Internet connectivity, and the ChargePoint app
- The exact location (to the parking space) where the CPF50 charging station is physically installed

## Power Up

Power up the station. If the station does not power up, check the wiring from the electrical panel to the terminal block for issues.

## Pinpoint the Station

Follow these instructions if your smartphone has a scanning app:

1. Open a QR Code scanning app.
2. Point the camera at the QR code on the label.



3. The app automatically re-directs you to the installer pinpointing page and enters the MAC address of the charging station.
4. Follow the online instructions.

Follow these instructions if your smartphone does not have a scanning app:

1. Use your smartphone browser and navigate to [o.chargepoint.com](https://o.chargepoint.com).
2. Log into the ChargePoint mobile site from your smartphone with your Installer login.
3. Enter the MAC address and activation password printed on the activation label, and touch **Next**.
4. Confirm that you are installing a new charging station.
5. When prompted, touch **OK** to share your GPS location data with the ChargePoint mobile site.
6. When prompted, touch **OK** to review the station's location on Google™ Maps.
7. Review the station address and zoom in to review the initial position of the station's pin on the map.
8. Move the pin with your finger to the correct parking spot location.
9. If needed, manually adjust the address of the CPF50 location.
10. Take a picture of the station using your smartphone.
11. Scroll down to **Upload a Station Picture** and choose the station picture.
12. Add any helpful information for drivers.
13. Touch **Submit** to pinpoint the CPF50 on the ChargePoint map. The mobile page displays a 3-digit PIN code.

5:04

chargepoint.com

Welcome  
Laseul

ChargePoint Station Installation

Enter the MAC address and Activation Password of the new station you're installing.

MAC  
0024b10000000125

Activation Password  
94262

Next

Copyright © 2008-2019 ChargePoint, Inc.  
All rights reserved.

## Start a Charging Session

Once the pinpointing is complete, use the ChargePoint app to start a test session. Verify that you can:

- Initiate a charging session.
- Plug the handle into a vehicle or a vehicle emulator (if available).

- 
- Return the handle to the holster.

## Complete the Checklist

Before leaving the installation site, complete the post-installation checklist using the link below:

<https://docs.chargepoint.com/ref-docs-sec/content/pdfs/2-ac/cpf50/cpf50-checklist.pdf>

Provide the checklist and any spare parts (activation labels, and so on.) to the person responsible for activating the stations. This completes the installation of the CPF50 charging station.

## Limited Warranty Information and Disclaimer

The Limited Warranty you received with your charging station is subject to certain exceptions and exclusions. For example, your use of, installation of, or modification to, the ChargePoint® charging station in a manner in which the ChargePoint® charging station is not intended to be used or modified will void the limited warranty. You should review your limited warranty and become familiar with the terms thereof. Other than any such limited warranty, the ChargePoint products are provided "AS IS," and ChargePoint, Inc. and its distributors expressly disclaim all implied warranties, including any warranty of design, merchantability, fitness for a particular purposes and non-infringement, to the maximum extent permitted by law.

## Limitation of Liability

CHARGEPOINT IS NOT LIABLE FOR ANY DIRECT, INDIRECT, INCIDENTAL, SPECIAL, PUNITIVE OR CONSEQUENTIAL DAMAGES, INCLUDING WITHOUT LIMITATION LOST PROFITS, LOST BUSINESS, LOST DATA, LOSS OF USE, OR COST OF COVER INCURRED BY YOU ARISING OUT OF OR RELATED TO YOUR PURCHASE OR USE OF, OR INABILITY TO USE, THE CHARGING STATION, UNDER ANY THEORY OF LIABILITY, WHETHER IN AN ACTION IN CONTRACT, STRICT LIABILITY, TORT (INCLUDING NEGLIGENCE) OR OTHER LEGAL OR EQUITABLE THEORY, EVEN IF CHARGEPOINT KNEW OR SHOULD HAVE KNOWN OF THE POSSIBILITY OF SUCH DAMAGES. IN ANY EVENT, THE CUMULATIVE LIABILITY OF CHARGEPOINT FOR ALL CLAIMS WHATSOEVER RELATED TO THE CHARGING STATION WILL NOT EXCEED THE PRICE YOU PAID FOR THE CHARGING STATION. THE LIMITATIONS SET FORTH HEREIN ARE INTENDED TO LIMIT THE LIABILITY OF CHARGEPOINT AND SHALL APPLY NOTWITHSTANDING ANY FAILURE OF ESSENTIAL PURPOSE OF ANY LIMITED REMEDY.

## FCC Compliance Statement

This equipment has been tested and found to comply with the limits for a Class A digital device pursuant to Part 15 of the FCC Rules. These limits are designed to provide reasonable protection against harmful interference when the equipment is operated in a commercial environment. This equipment generates, uses, and can radiate radio frequency energy and, if not installed and used in accordance with the manufacturer's instruction manual, may cause harmful interference with radio communications. Operation of this equipment in a residential area is likely to cause harmful interference, in which case, you will be required to correct the interference at your own expense.

Important: Changes or modifications to this product not authorized by ChargePoint, Inc., could affect the EMC compliance and revoke your authority to operate this product.

Exposure to Radio Frequency Energy: The radiated power output of the 802.11 b/g/n radio and cellular modem (optional) in this device is below the FCC radio frequency exposure limits for uncontrolled equipment. The antenna of this product, used under normal conditions, is at least 20 cm away from the body of the user. This device must not be co-located or operated with any other antenna or transmitter by the manufacturer, subject to the conditions of the FCC Grant.

## ISED (formerly Industry Canada)

This device complies with the licence-exempt RSS standard(s) of Innovation, Science and Economic Development Canada (ISED). Operation is subject to the following two conditions: (1) this device may not cause interference, and (2) this device must accept any interference, including interference that may cause undesired operation of the device.

Cet appareil est conforme aux flux RSS exemptés de licence d'Innovation, Sciences et Développement économique Canada (ISDE). L'exploitation est autorisée aux deux conditions suivantes : (1) l'appareil ne doit pas produire de brouillage, et (2) l'utilisateur de l'appareil doit accepter.



[chargepoint.com/support](https://chargepoint.com/support)

75-001378-01 r4

Radiation Exposure Statement: This equipment complies with the IC RSS-102 radiation exposure limits set forth for an uncontrolled environment. This equipment should be installed and operated with a minimum distance of 20 cm between the radiator and your body.

Énoncé d'exposition aux rayonnements: Cet équipement est conforme aux limites d'exposition aux rayonnements ioniques RSS-102 Pour un environnement incontrôlé. Cet équipement doit être installé et utilisé avec un Distance minimale de 20 cm entre le radiateur et votre corps.

See [FCC/ISED](#).

[FCC/IC Compliance Labels](#)

Visit [chargepoint.com/labels](https://chargepoint.com/labels)



[chargepoint.com/support](https://chargepoint.com/support)

75-001378-01 r4