

# CP Gateway (CPGW)

## ChargePoint® Networked Charging Stations

### Field Upgrade Procedure: CAT 4 LTE Modem

---

This document describes the steps to add an LTE MultiTech modem to a ChargePoint Gateway. The modem comes with a SIM card installed and Dual Lock fastener. The modem gets power from, and communicates with, the Gateway circuit board via the supplied USB cable.



**CAUTION:** This must be performed by personnel experienced with installing and servicing ChargePoint stations. Incorrect installation can damage the station.

---



**CAUTION:** All fasteners and parts must be accounted for. Do not drop any parts into the body of the station. Electrical arcing or damage could occur.

---



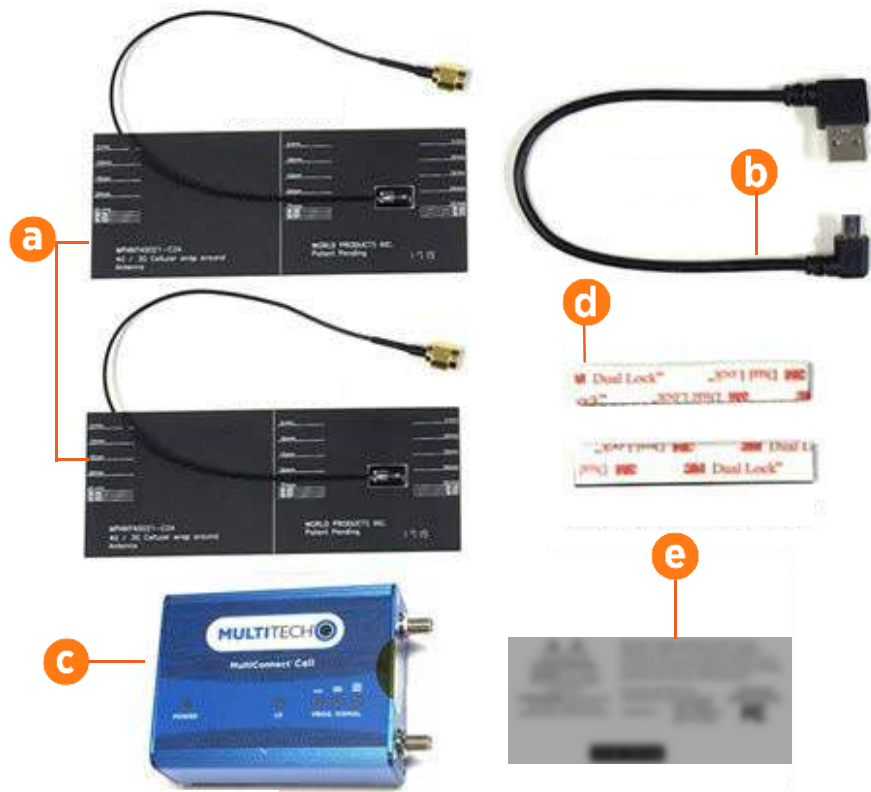
**Important:** Before you begin this procedure, locate the serial number on the bottom of the head assembly and contact ChargePoint Support: [chargepoint.com/support](https://chargepoint.com/support). Confirm that a version of software compatible with the CAT 4 LTE Modem is available.

---

## Supplied Items

- Antenna (a)
- USB cable (b)
- Modem (includes SIM card) (c)
- Dual Lock fastener (d)
- Replacement compliance label (FCC ID information may differ from photo.) (e)

**Note:** The USB cable might look slightly different than the cable depicted.



## You Will Need

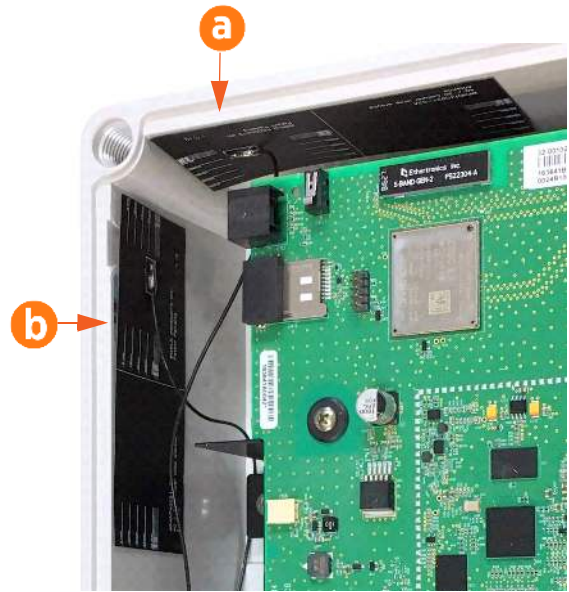
- Phillips screwdriver
- 8 mm (5/16 in) combination wrench (optional)
- Isopropyl wipes
- Clean towel or paper towels

## Open the Gateway Enclosure

1. Disconnect power from the Gateway.
  - a. If a plug is connected, unplug the unit.
  - b. If the unit is hardwired, shut off the circuit breaker supplying the unit.
2. Use a Phillips head screwdriver to remove the four screws at the corners of the enclosure.
3. Remove the cover.

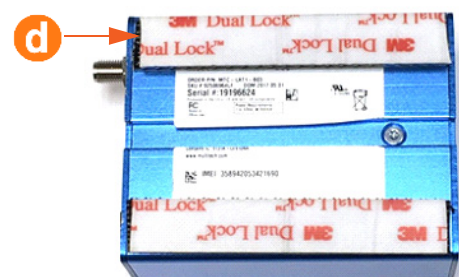
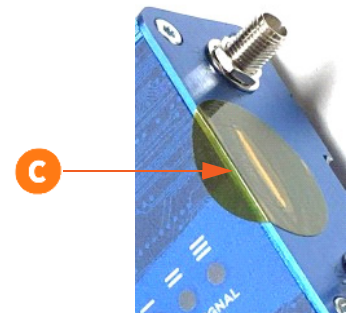
## Install the Antennas

1. Remove the liner from the adhesive on the back of the antenna.
2. Apply one antenna to the inside of the enclosure (a). It should be 3 mm (1/8 in) from the top edge and front edge of the enclosure.
3. Apply the second antenna to the inside top of the enclosure (b).



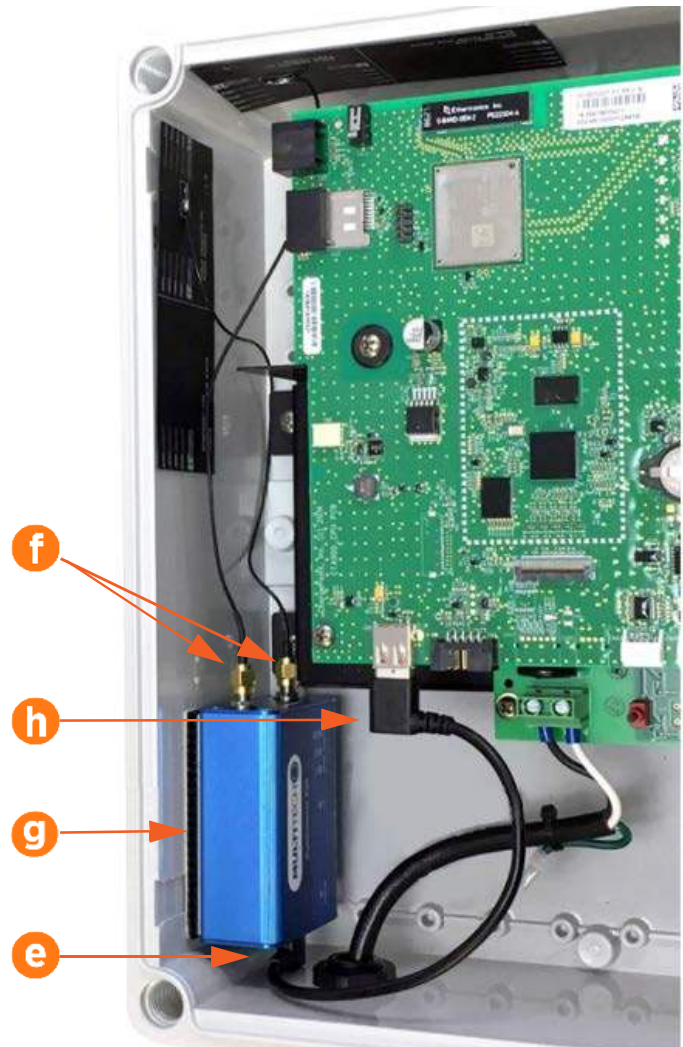
## Apply the Dual Lock Fastener to the Modem

1. Confirm the modem has a SIM card installed and that it is fully inserted. Do not remove the label (c) over the SIM slot. If the modem does not have a SIM card, contact ChargePoint Support: [chargepoint.com/support](https://chargepoint.com/support)
2. Remove the liner from one of the pieces of Dual Lock fastener (d).
3. Apply the mated fastener to the modem.
4. Repeat for the other piece.

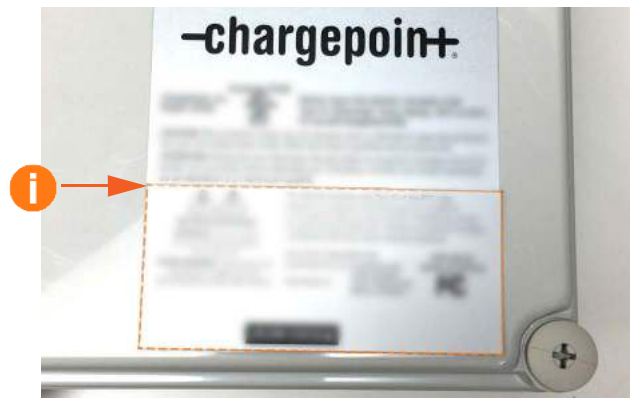


## Install the Modem

1. Plug the "Mini B" end of the USB cable (e) into the USB jack on the end of the modem.
2. Thread both antenna connectors (f) onto the modem. Use an 8 mm combination wrench to tighten the connectors to .5 Nm. The two cables are interchangeable.
3. Remove the liner from the other side of the two strips of the Dual Lock fastener and apply firm pressure to affix the modem to the interior of the CPGW enclosure (g).
4. Plug the "A" end of the USB cable (h) into the USB receptacle on the circuit board.
5. Replace the enclosure cover.



6. Clean the existing label with an isopropyl wipe. Dry the label with a paper towel. Apply the new replacement compliance label over the existing label (i).
7. Reapply power to the Gateway.
8. Contact ChargePoint Support: [chargepoint.com/support](https://chargepoint.com/support) and confirm that the stations are visible on the NOS.



[chargepoint.com/support](https://chargepoint.com/support)

Document Part Number 75-001452-01 r3