

# CP Gateway (CPGW)

## ChargePoint® Networked Charging Stations

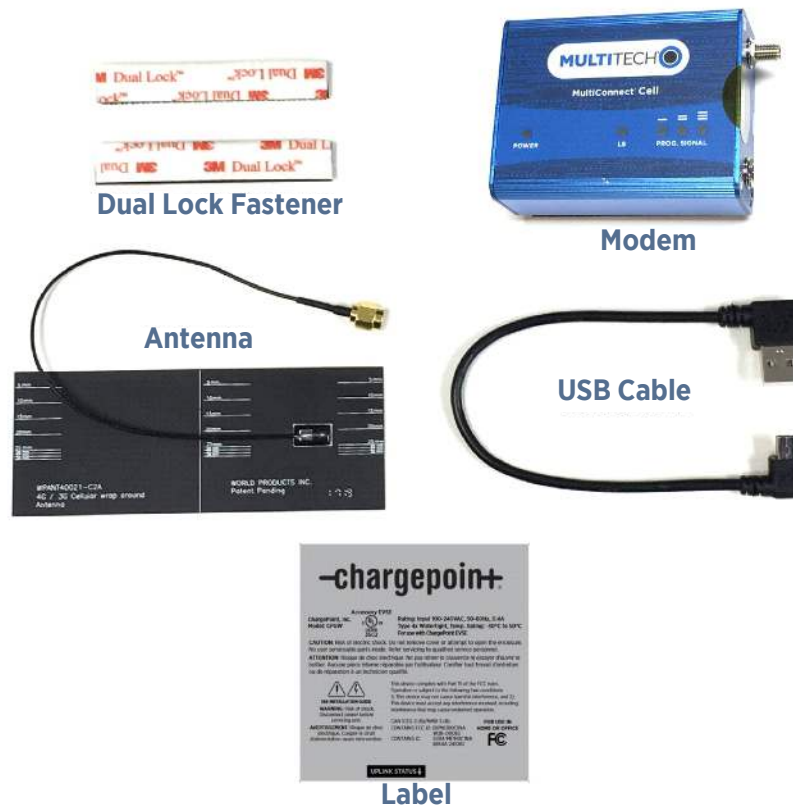
### Field Upgrade Procedure: LTE Modem

---

This document describes the steps to add a Cat-M1 MultiTech modem to a CP Gateway (CPGW). The modem mounts inside the CPGW using two adhesive fastener strips. The supplied antenna attaches with pressure sensitive adhesive. The modem gets power from, and communicates with, the CPGW via the supplied USB cable.

### Supplied Items:

- Modem (with Dual Lock fastener attached)
- SIM card (installed in modem)
- USB cable
- Antenna
- Installation instructions
- Replacement rating and compliance label (FCC ID information may differ from photo.)



## You Will Need:

- Phillips screwdriver
- 5/16" combination wrench

## Overview of Steps

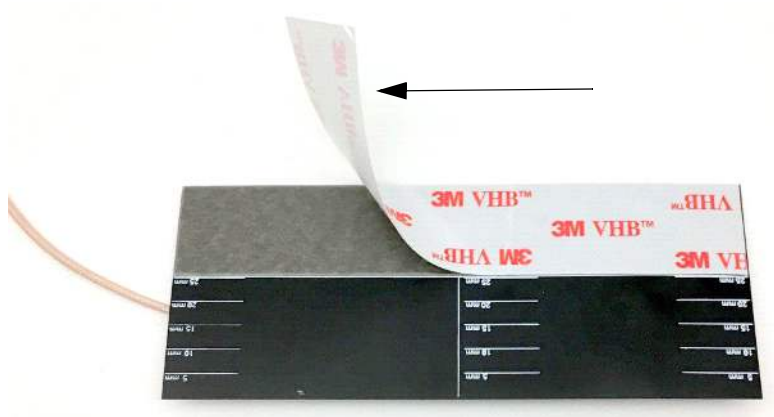
1. Open the Gateway Enclosure
2. Install the Antenna
3. Apply the Dual Lock Fastener to the Modem
4. Install the Modem

## Open the Gateway Enclosure

1. Disconnect power from the Gateway
  - a. If a plug connected, unplug the unit.
  - b. If the unit is hard wired, shut off the circuit breaker supplying the unit.
2. Remove the four screws at the corners of the enclosure.
3. Remove the cover.

## Install the Antenna

1. Remove the liner from the adhesive on the back of the antenna.

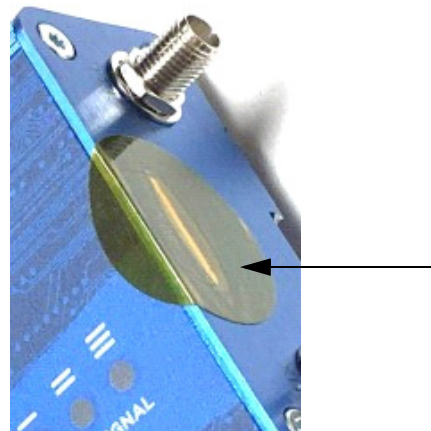


2. Apply the antenna to the inside of the enclosure as shown below. It should be 13 mm (1/2 in) from the top edge and front edge of the enclosure.



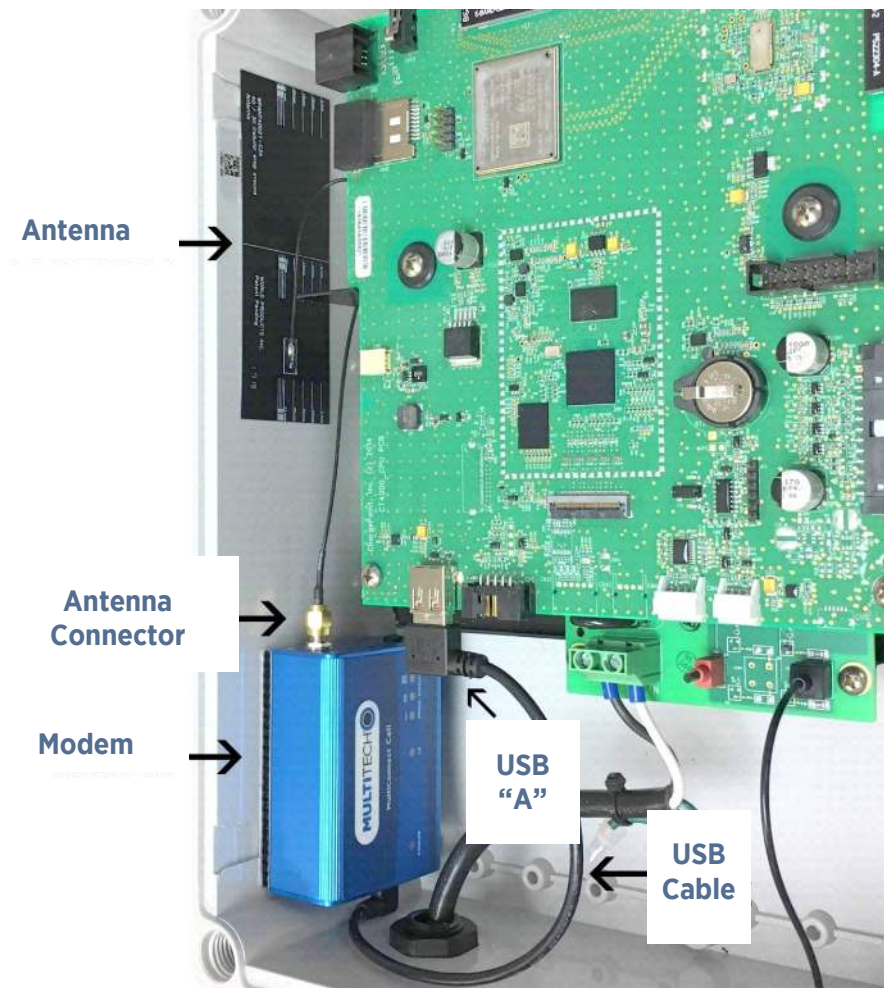
## Apply the Dual Lock Fastener to the Modem

1. Remove the liner from one of the pieces of the Dual Lock fastener.
2. Apply the mated fastener to the modem as shown below.
3. Repeat for the other piece.
4. Confirm the modem has a SIM card installed and that it is fully inserted. See below. Do not remove the round, orange label over the SIM slot.



## Install the Modem

1. Plug the "Mini B" end of the USB cable into the USB jack on the end of the modem.
2. Remove the liner from the other side of the two strips of the Dual Lock fastener and apply the modem to the inside of the CPGW as shown below.
3. Apply firm pressure to ensure the modem is attached to the enclosure.
4. Plug the "A" end of the USB cable into the USB receptacle on the circuit board.
5. Install the antenna connector onto the modem as shown above.
6. Replace the enclosure cover.
7. Apply the new replacement rating and compliance label over the old one.
8. Reapply power to the Gateway.
9. Confirm the stations are visible on the NOS.



[chargepoint.com/support](https://chargepoint.com/support)

Document Part Number 75-001281-01 Rev. 3