

CP Gateway (CPGW)

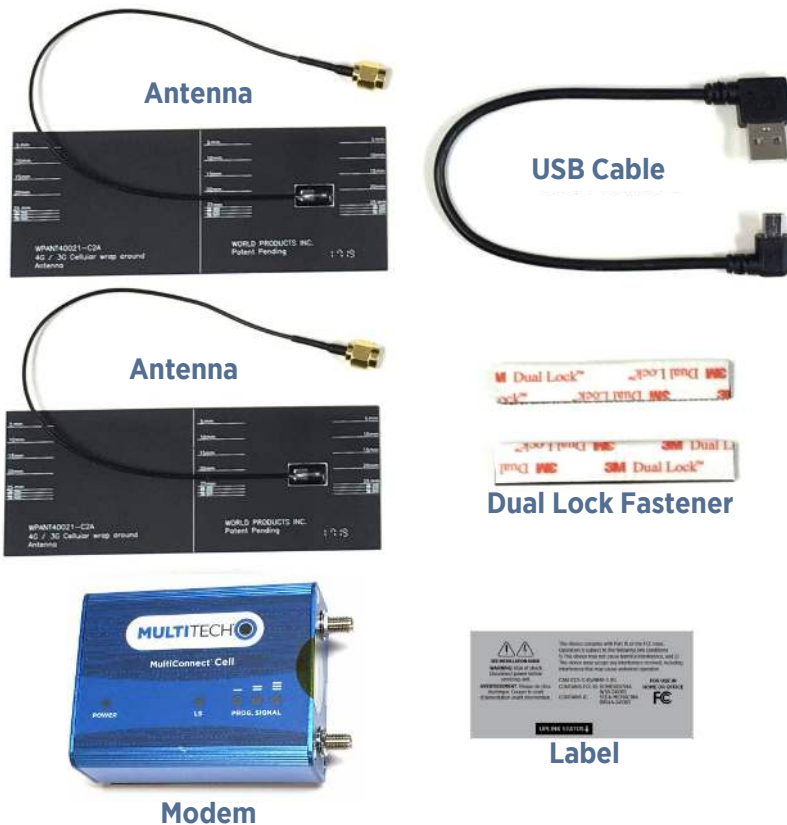
ChargePoint® Networked Charging Stations

Field Upgrade Procedure: Cat-3 LTE Modem

This document describes the steps to add an LTE MultiTech modem to a ChargePoint Gateway. The modem comes with a SIM card installed and Dual Lock fastener attached. The supplied antennas attach with pressure sensitive adhesive. The modem gets power from, and communicates with the Gateway circuit board via the supplied USB cable.

Supplied Items:

- Modem (with Dual Lock fastener attached)
- SIM card (installed in modem)
- USB cable
- Antenna (2)
- Installation instructions
- Replacement compliance label (FCC ID information may differ from photo.)



You Will Need:

- Phillips screwdriver
- 5/16" combination wrench
- Isopropyl alcohol wipes

Overview of Steps

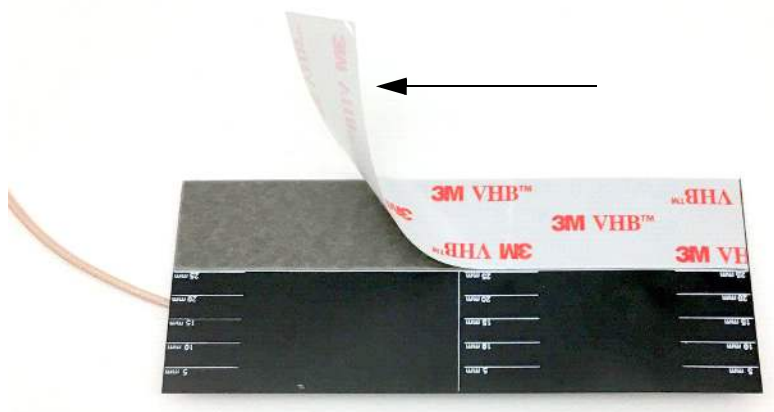
1. Open the Gateway Enclosure
2. Install the Antennas
3. Apply the Dual Lock Fastener to the Modem
4. Install the Modem

Open the Gateway Enclosure

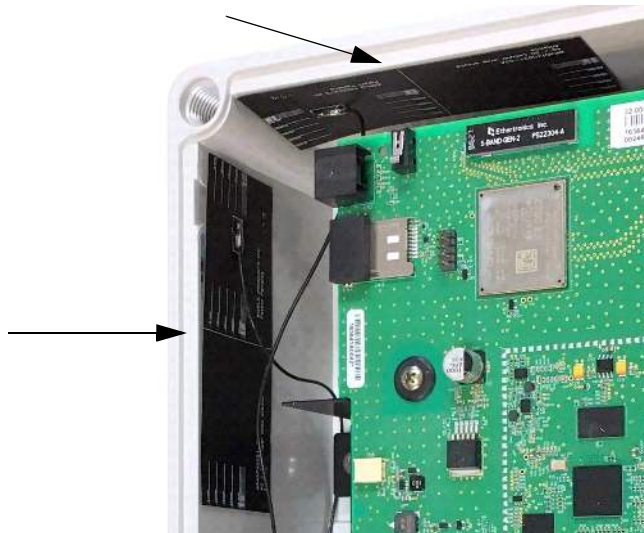
1. Disconnect power from the Gateway
 - a. If a plug connected, unplug the unit.
 - b. If the unit is hard wired, shut off the circuit breaker supplying the unit.
2. Remove the four screws at the corners of the enclosure.
3. Remove the cover.

Install the Antennas

1. Remove the liner from the adhesive on the back of the antenna.

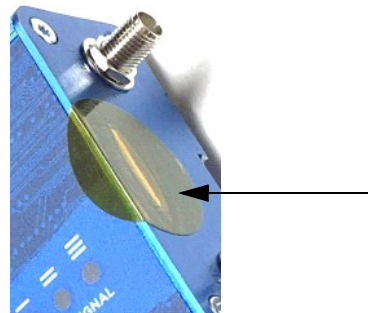


2. Apply one antenna to the inside of the enclosure as shown below. It should be 1/8" (3 mm) from the top edge and front edge of the enclosure.
3. Install the second antenna to the inside top of the enclosure as shown below.



Apply the Dual Lock Fastener to the Modem

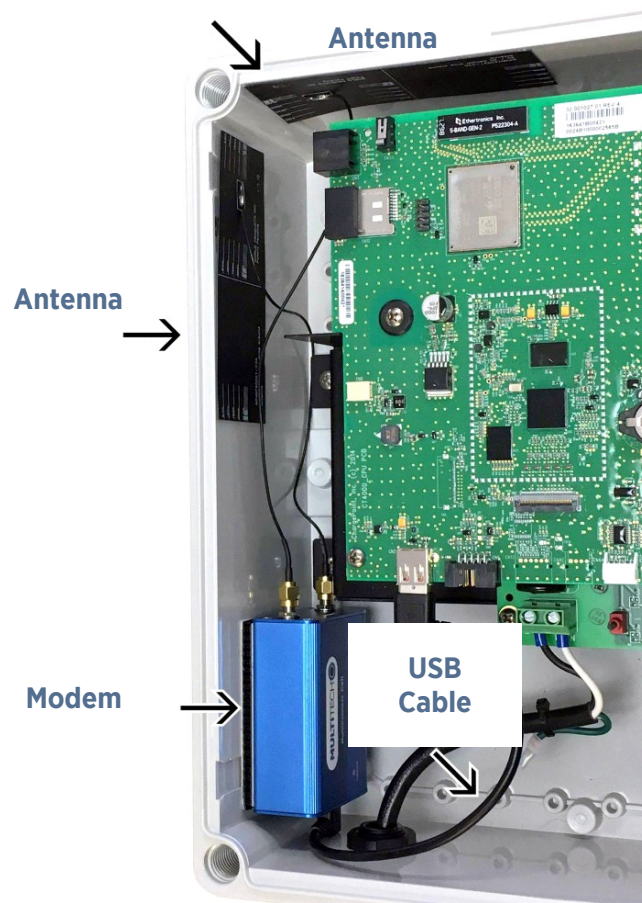
1. Remove the liner from one of the pieces of the Dual Lock fastener.
2. Apply the mated fastener to the modem as shown below.
3. Repeat for the other piece.
4. Confirm the modem has a SIM card installed and that it is fully inserted. See below. Do not remove the round, orange label over the SIM slot.



Install the Modem

1. Plug the "Mini B" end of the USB cable into the USB jack on the end of the modem.
2. Remove the liner from the other side of the two strips of the Dual Lock fastener and apply the modem to the inside of the CPGW as shown below.
3. Locate the modem and apply firm pressure to affix it to the interior of the enclosure as shown below.
4. Plug the "A" end of the USB cable into the USB receptacle on the circuit board.

5. Install the antenna connector onto the modem as shown below.



6. Replace the enclosure cover.
7. Clean the existing label with an isopropyl alcohol wipe and apply the new replacement compliance label over the existing one as shown below.



8. Reapply power to the Gateway.
9. Confirm the stations are visible on the NOS.



chargepoint.com/support

Document Part Number 75-001310-01 Rev. 2