

Pole Mount Kit ChargePoint® CT4000 Charging Station



1-888-758-4389 | chargepoint.com

-chargepoint+

963852741



ChargePoint, Inc.
254 East Hacienda Avenue
Campbell, CA 95008 USA
US toll free: +1-877-850-4562
www.chargepoint.com

Installation Guide

SAVE THESE IMPORTANT SAFETY INSTRUCTIONS

This manual contains important instructions that must be followed during installation of a ChargePoint® Networked Charging Station.

Grounding instructions

The ChargePoint® Charging Station must be connected to a grounded, metal, permanent wiring system; or an equipment-grounding conductor is to be run with circuit conductors and connected to the equipment grounding terminal or lead on the Electric Vehicle Supply Equipment (EVSE). Connections to the EVSE shall comply with all applicable codes and ordinances.

FCC Compliance Statement

This equipment has been tested and found to comply with the limits for a Class B digital device pursuant to Part 15 of the FCC Rules. These limits are designed to provide reasonable protection against harmful interference when the equipment is operated in a commercial environment. This equipment generates, uses, and can radiate radio frequency energy and, if not installed and used in accordance with the manufacturer's instruction manual, may cause harmful interference with radio communications. Operation of this equipment in a residential area is likely to cause harmful interference, in which case, you will be required to correct the interference at your own expense.

Important: Changes or modifications to this product not authorized by ChargePoint, Inc., could affect the EMC compliance and revoke your authority to operate this product.

Exposure to Radio Frequency Energy: The radiated power output of the 802.11 b/g/n radio and cellular modem (optional) in this device is below the FCC radio frequency exposure limits for uncontrolled equipment. This device should be operated with a minimum distance of at least 20 cm between the 802.11 b/g/n and cellular antennas and a person's body and must not be co-located or operated with any other antenna or transmitter by the manufacturer, subject to the conditions of the FCC Grant.

Industry Canada

This device complies with Industry Canada license-exempt RSS standard(s). Operation is subject to the following two conditions: (1) this device may not cause interference, and (2) this device must accept any interference, including interference that may cause undesired operation of the device.

Le présent appareil est conforme aux CNR d'Industrie Canada applicables aux appareils radio exempts de licence. L'exploitation est autorisée aux deux conditions suivantes : (1) l'appareil ne doit pas produire de brouillage, et (2) l'utilisateur de l'appareil doit accepter tout brouillage radioélectrique subi, même si le brouillage est susceptible d'en compromettre le fonctionnement.

FCC/IC Compliance Labels

Go to <http://www.chargepoint.com/labels/>.

Safety and compliance

This document provides instructions to install the ChargePoint® Charging Station and should not be used for any other product. Before installing the ChargePoint® Charging Station, you should review this manual carefully and consult with a licensed contractor, licensed electrician and trained installation expert to ensure compliance with local building practices, climate conditions, safety standards, and all applicable codes and ordinances.

The ChargePoint® Charging Station should be installed only by a licensed contractor and a licensed electrician and in accordance with all local and national codes and standards. The ChargePoint® Charging Station should be inspected by a qualified installer prior to the initial use. Under no circumstances will compliance with the information in this manual relieve the user of his/her responsibility to comply with all applicable codes or safety standards. This document describes the most commonly-used installation and mounting scenarios. If situations arise in which it is not possible to perform an installation following the procedures provided in this document, contact ChargePoint, Inc. ChargePoint, Inc. is not responsible for any damages that may occur resulting from custom installations that are not described in this document.

No accuracy guarantee

Reasonable effort was made to ensure that the specifications and other information in this manual are accurate and complete at the time of its publication. However, the specifications and other information in this manual are subject to change at any time without prior notice.

Warranty information and disclaimer

Your use of, or modification to, the ChargePoint® Charging Station in a manner in which the ChargePoint® Charging Station is not intended to be used or modified will void the limited warranty. Other than any such limited warranty, the ChargePoint products are provided "AS IS," and ChargePoint, Inc. and its distributors expressly disclaim all implied warranties, including any warranty of design, merchantability, fitness for a particular purposes and non-infringement, to the maximum extent permitted by law.

Limitation of liability

IN NO EVENT SHALL CHARGEPOINT, INC. OR ITS AUTHORIZED DISTRIBUTORS BE LIABLE FOR ANY INDIRECT, INCIDENTAL, SPECIAL, PUNITIVE, OR CONSEQUENTIAL DAMAGES, INCLUDING WITHOUT LIMITATION, LOST PROFITS, LOST DATA, LOSS OF USE, COST OF COVER, OR LOSS OR DAMAGE TO THE CHARGEPOINT® CHARGING STATION, ARISING OUT OF OR RELATING TO THE USE OR INABILITY TO USE THIS MANUAL, EVEN IF CHARGEPOINT, INC. OR ITS AUTHORIZED DISTRIBUTORS HAVE BEEN ADVISED OF THE POSSIBILITY OF SUCH DAMAGES.

Copyright and trademarks

©2016 ChargePoint, Inc. All rights reserved. This material is protected by the copyright laws of the United States and other countries. It may not be modified, reproduced or distributed without the prior, express written consent of ChargePoint, Inc. CHARGEPOINT is a U.S. and European Union registered trademark and service mark of ChargePoint, Inc. and can not be used without the prior written consent of ChargePoint. All other products or services mentioned are the trademarks, service marks, registered trademarks or registered service marks of their respective holders. ChargePoint, Inc. has several patents filed.

Contents

1 Introduction

Before Installing the CT4000 Pole Mount.....	1-1
Check Contents of Shipping Box	1-1
You Will Need	1-2

2 Installation Instructions

Overview of Steps	2-1
Step 1: Mount the Bracket	2-2
Step 2: Strap the Bracket	2-4
Step 3: Mount Bracket Cover and CMK Rear Brackets.....	2-5
Step 4: Install the CT4000 Wall Housing and CMK.....	2-6

Introduction

This document provides step-by-step instructions on how to install a CT4000 ChargePoint® Charging Station on a street lighting pole.

Before Installing the CT4000 Pole Mount

Installation must be performed by qualified personnel only.

- Ensure that the installation site has been adequately evaluated for access to power and is suitable for vehicle parking. Refer to the CT4000 Family Installation Guide to ensure proper wiring is available at the installation pole.
- Remove any signs on the pole that are below 72" from grade level.
- Ensure that the CT4000 Wall Mount Housing is available at the installation site.
- Ensure that the CT4000 Cord Management Kit (CMK) is available at the installation site.
- Ensure that the CT4000 Install guide is available at the installation site.
- Review the contents of this document to familiarize yourself with the contents of each shipping box and the required installation steps.

Check Contents of Shipping Box

The CT4000 Pole Mount Kit includes the following parts. Verify that you have received all of these parts in the shipping box.

Quantity	Part Number	Description
PARTS		
1	21-001266-01	Bracket, CT4000, Lamp Pole Mount, Tall
1	21-001267-01	Bracket Cover, CT4000, Lamp Pole Mount, Tall
1	20-001436-01	Gasket, Rubber D-Seal, 1" Hollow, 6 ft
HARDWARE		
1	10-001010-01	Strapping, SS302, ¾"x0.025"Thick
3	10-001013-01	Strap Buckle,.75in,Std Duty,SS
2	12-002458-01	Bushing, ½"Trade, Thick Panel, Snap-in
1	12-002445-01	Bushing, ¾"Trade Knockout, Thick Wall
4	11-001383-01	Screw, 3/8" 16 x 0.75", Flange Head, Stainless Steel Serrated
1	18-001034-01	Silicone Sealant, RTV, Dow Corning 700,3 oz (90 ml)

It is assumed that the CT4000 Pole Mount is being installed at the same time as a CT4000 Wall Mount Housing and a CT4000 Cord Management Kit. Parts from these units are also needed to complete the installation.

You Will Need:

- Electric Drill
- Hole saw or step drill, $\frac{3}{4}$ " Trade Knockout Size (1-1/8")
- Ratchet and 9/16" Deep Hex Socket
- Tape Measure
- Strapping Tool (for example isostainless.com #T001)
- Deburring Tool
- 3/8"-16 HSS Tap
- 5/16" HSS Drill Bit
- #3 Phillips Screwdriver
- Adjustable Wrench
- Wire strippers / Cutters
- Wire Fish Tape

Installation Instructions

2

Overview of Steps

The installation process involves the following steps:

1. Mount the bracket (page 2-2)
2. Strap the bracket (page 2-4)
3. Mount Bracket Cover and CMK Rear Brackets (page 2-5)
4. Install the CT4000 Wall Housing and CMK (page 2-6)

These steps are detailed in the remainder of this section. When these steps are completed, continue with the installation as described in the CT4000 Installation Guide.



DANGER: RISK OF SHOCK

Turn off the circuit breaker and do not restore power until installation is complete. Failure to follow these instructions could result in electrocution.

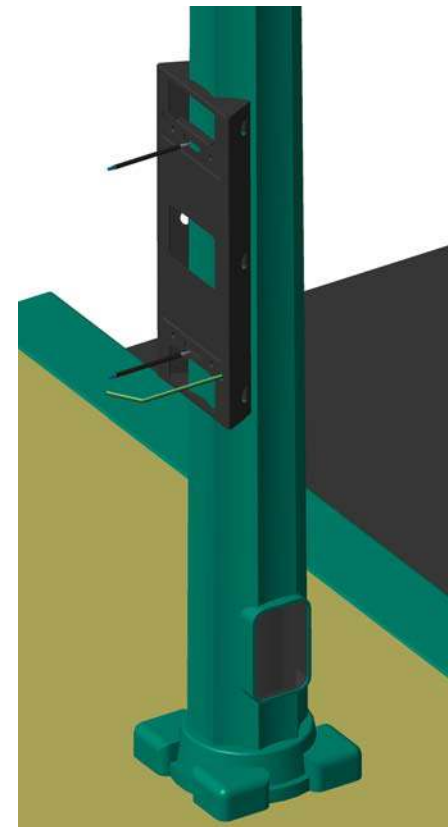
Step 1: Mount the Bracket

NOTE: The instructions and illustrations provided below describe how to mount the bracket to a scalloped light pole. In situations where the pole is round, pay particular attention to the location of the holes—it is important to ensure that the bracket is positioned so the front of the station is facing away from the road.

1. While facing the street, mark the center depression of the scallop one position to the right at 31 1/2" above grade.
2. Using the 3/4" KO hole drill, drill a hole through the pole, being careful not to damage the existing wiring inside the pole.
3. Use the de-burring tool to remove all burrs and sharp edges from the hole.
4. Pull two power wires and the ground wire through the hole in the pole, leaving at last 18" of wire extending from the pole.



5. While holding the bracket so the top is 51 1/2" above grade, mark the upper and lower mounting holes. Using a 5/16" drill bit, drill the marked holes.
6. Tap the holes for 3/8"-1 6 thread.



7. Route the wiring through the hole in the bracket, as shown, then fasten the bracket to the pole using a 9/16" nut driver to tighten two of the 3/8"- 16 x 0.75" flange head screws. Tighten to 20 ft-lbs.



Step 2: Strap the Bracket

1. Cut approximately 2 1/2 feet of the supplied stainless steel strap.
2. Cut 2 feet of the rubber D-shaped gasket.
3. Slide the gasket over the strap so it is centered on the strap.
4. Run the strap through the top set of openings on the side of the bracket. Close the strapping seal through the bracket so that it will not be exposed later.

NOTE: Detailed strapping instructions are available at <http://isostainless.com/banding-tools.htm>.

5. Repeat the above steps for the center and lower strapping positions.



Step 3: Mount Bracket Cover and CMK Rear Brackets

1. Insert two 3/8" - 16 hex screws into a CMK rear bracket.
2. Position the bracket cover over the pole mount bracket, aligning the four tapped holes.

NOTE: Ensure the wires are routed through the hole at the lower, right corner of the bracket cover.

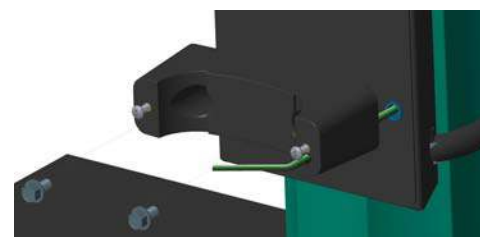
3. Align and install the top rear CMK bracket using a 9/16" deep socket at the top two holes.
4. Install a 5/8" bushing through the bracket panel.



5. Route the wires through the hole in the lower rear CMK bracket and align to the pole mount brackets, as shown.



6. Tighten all four bolts to 20 ft-lbs.



Step 4: Install the CT4000 Wall Housing and CMK

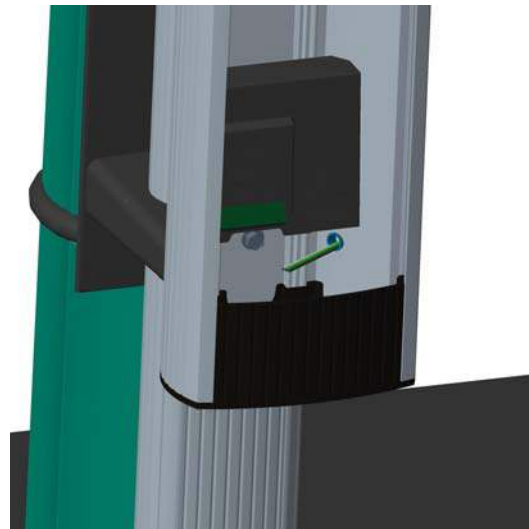
You are now ready to install the CT4000 CMK and Wall Housing. For instructions, refer to the CT4000 Installation Guide (included in the shipping box with the CT4000 charging station's top cap). When following the instructions, make these exceptions:

- When installing the CMK's front brackets, install the top bracket as described. However, for the lower bracket, you must first remove the screws. Then route the wires through the keyhole in the bracket and install the screws from the front. Tighten as described.



- When installing the CT4000 Wall Housing, route the wires through the hole in the lower, right side of the housing. After tightening the bolts, apply the second ½" bushing to the hole.

Terminate the power wires and complete the installation as described in the CT4000 Installation Guide.





254 East Hacienda Avenue
Campbell, CA 95008 USA
US toll free: +1-877-850-4562
www.chargepoint.com

Document Part Number: 75-001184-01